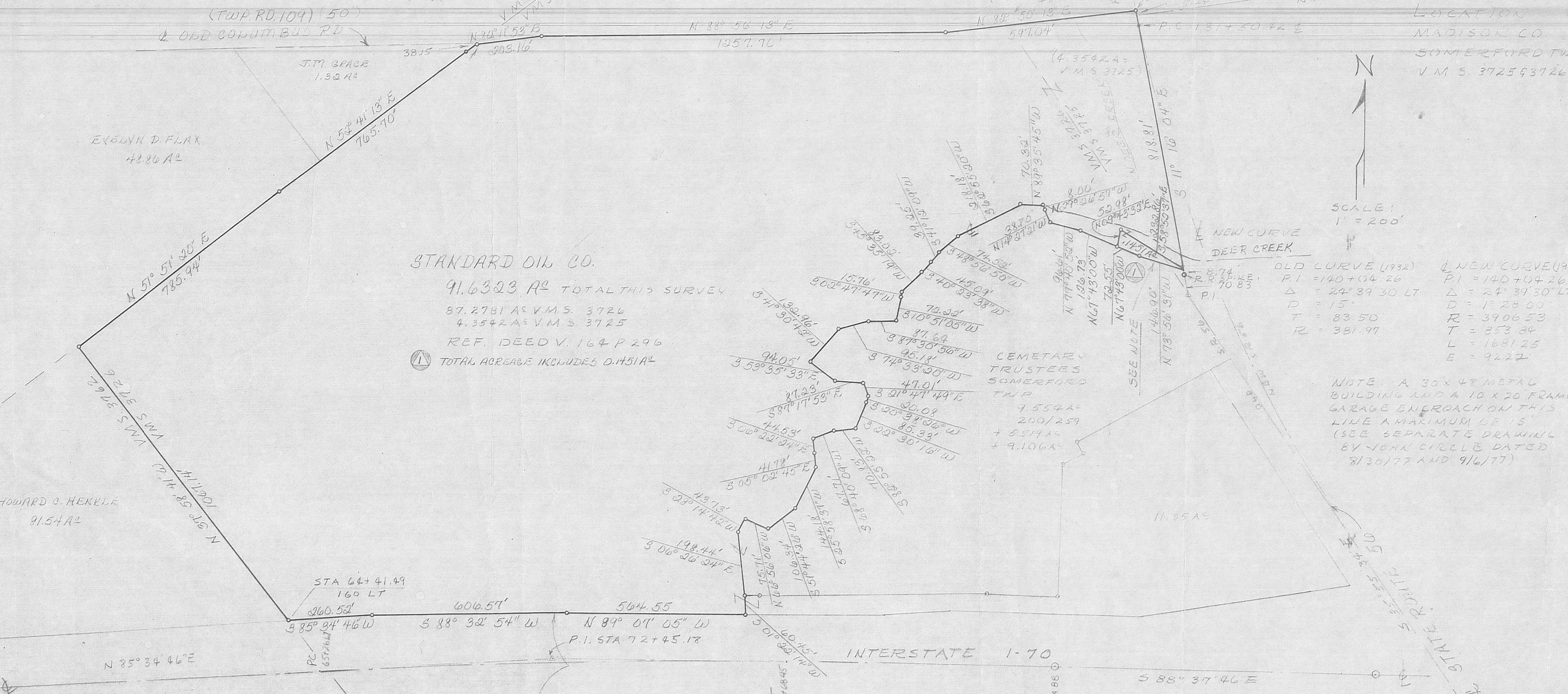


JOB RECORDS REMAIN ON FILE INDEFINITELY. COPIES OF THIS DRAWING ARE ALWAYS AVAILABLE FOR PRINTING COSTS ONLY.

LOCATION
MADISON CO.
SOMERFORD TWP
V.M.S. 3725 & 3726



STANDARD OIL CO.
91.6323 A^c TOTAL THIS SURVEY
87.2781 A^c V.M.S. 3726
4.3542 A^c V.M.S. 3725
REF. DEED V. 164 P 296
① TOTAL ACREAGE INCLUDES 0.1451 A^c

SCALE: 1" = 200'
NEW CURVE (1960)
P.I. = 140+04.26
Δ = 24° 39' 30" LT
D = 15'
T = 83.50
R = 381.97
NEW CURVE (1960)
P.I. = 140+04.26
Δ = 24° 39' 30" LT
D = 1° 28' 00"
R = 3906.53
T = 853.84
L = 1681.25
E = 942.2'

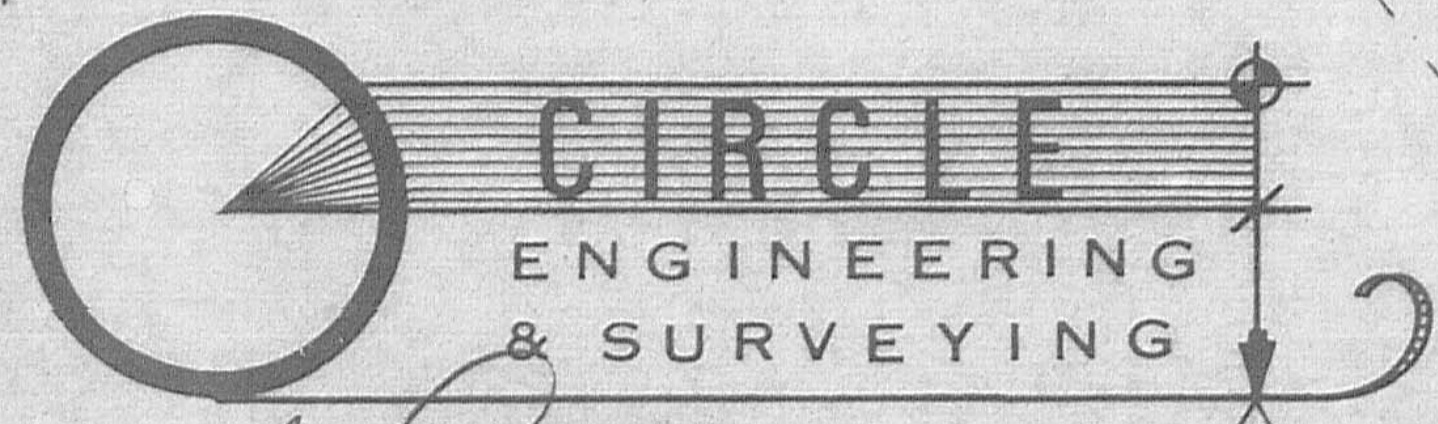
NOTE: A 30' x 48' METAL BUILDING AND A 10' x 20' FRAME GARAGE ENDOACH ON THIS LINE A MAXIMUM OF 15' (SEE SEPARATE DRAWING BY JOHN CIRCLE DATED 8/30/77 AND 9/6/77)

CEMETARY TRUSTEES SOMERFORD TWP
7.554 A^c
200/259
+ 5.519 A^c
+ 9.106 A^c
SEE NOTE

CURVE DATA
P.I. STA 72+45.18
Δ = 5° 47' 28" RT
D = 0° 24' 00"
R = 14,323.94'
L = 1,447.78'
T = 724.61'
E = 18.31'



① REVISION #1
SET OUT 0.1451 A^c PARCEL
(0.137 A^c IN V.M.S. 3725 & 0.1361 A^c IN V.M.S. 3726)
John Circle 9/27/77



JOHN CIRCLE
Professional Engineer & Surveyor
187 Sinsbury Drive
Worthington, Ohio 43085
Registration No. 19131
Registration No. 4340
Telephone: 614-885-9633

John Circle 9/6/77