

ANNEXATION TO CITY OF LONDON

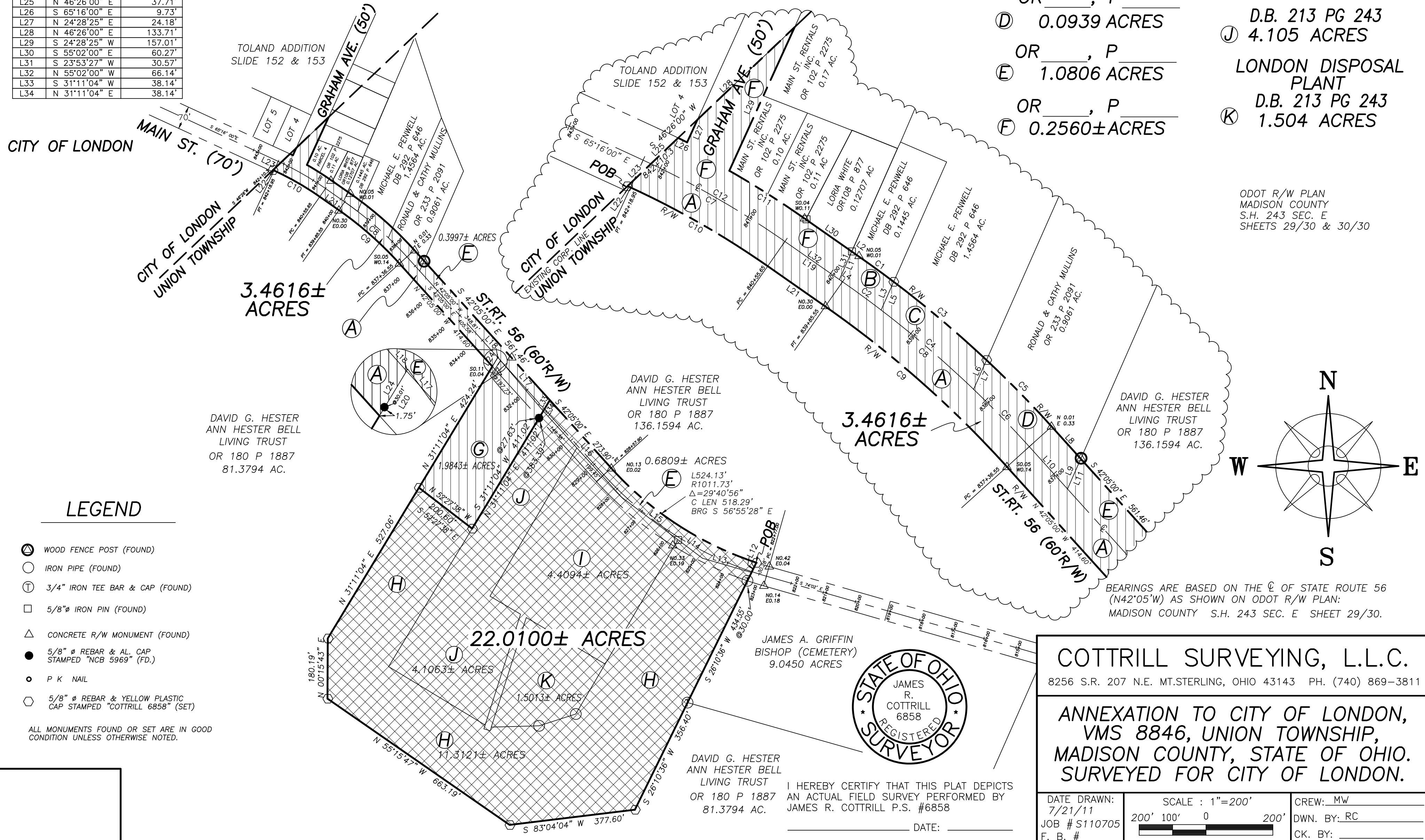
DEED REFERENCE

LINE	BEARING	DISTANCE
L1	N 23°53'27" E	30.57'
L2	S 55°02'00" E	9.84'
L3	S 23°50'59" W	30.84'
L4	N 55°02'00" W	3.96'
L5	N 23°50'59" E	30.84'
L6	S 23°51'01" W	31.85'
L7	N 23°51'01" E	31.85'
L8	S 42°05'00" E	43.29'
L9	S 23°42'21" W	32.89'
L10	N 42°05'00" W	56.78'
L11	N 23°42'21" E	32.89'
L12	S 28°10'36" W	32.85'
L13	N 73°49'24" W	152.93'
L14	N 52°57'34" W	91.64'
L15	N 52°57'34" W	211.00'
L16	N 42°16'56" W	348.83'
L17	N 40°11'30" W	210.39'
L18	S 31°11'04" W	0.44'
L19	S 55°02'00" E	66.14'
L20	S 31°11'04" W	31.33'
L21	N 55°02'00" W	70.10'
L22	N 65°16'00" W	3.27'
L23	N 46°26'00" E	32.24'
L24	S 31°11'04" W	31.76'
L25	N 46°26'00" E	37.71'
L26	S 65°16'00" E	9.73'
L27	N 24°28'25" E	24.18'
L28	N 46°26'00" E	133.71'
L29	S 24°28'25" W	157.01'
L30	S 55°02'00" E	60.27'
L31	S 23°53'27" W	30.57'
L32	N 55°02'00" W	66.14'
L33	S 31°11'04" W	38.14'
L34	N 31°11'04" E	38.14'

CURVE	RADIUS	ARC LENGTH	CHORD LENGTH	CHORD BEARING	DELTA ANGLE
C1	1131.67'	41.63'	41.62'	S 53°58'46" E	02°06'27"
C2	1101.67'	47.58'	47.58'	N 53°47'45" W	02°28'28"
C3	1131.67'	121.27'	121.21'	S 49°51'21" E	06°08'23"
C4	1101.67'	121.56'	121.50'	N 49°23'52" W	06°19'19"
C5	1131.67'	92.88'	92.86'	S 44°26'05" E	04°42'09"
C6	1101.67'	79.86'	79.84'	N 44°09'36" W	04°09'12"
C7	914.25'	154.65'	154.46'	S 59°52'44" E	09°41'30"
C8	1101.67'	248.99'	248.46'	S 48°33'30" E	12°56'59"
C9	1071.67'	242.21'	241.70'	N 48°33'30" W	12°56'59"
C10	884.25'	157.94'	157.73'	N 60°09'00" W	10°14'02"
C11	944.25'	86.19'	86.16'	S 57°38'52" E	05°13'47"
C12	2742.75'	463.94'	463.39'	N 59°52'44" W	09°41'30"

- CITY OF LONDON
OR ____, P ____
- Ⓐ 0.6086 ACRES
 - OR ____, P ____
 - Ⓑ 0.0355 ACRES
 - OR ____, P ____
 - Ⓒ 0.0836 ACRES
 - OR ____, P ____
 - Ⓓ 0.0939 ACRES
 - OR ____, P ____
 - Ⓔ 1.0806 ACRES
 - OR ____, P ____
 - Ⓕ 0.2560± ACRES

- CITY OF LONDON
OR 115 P 1929
- Ⓖ 2.000 ACRES
 - OR 125 P 495
 - Ⓗ 11.3121 ACRES
 - CITY OF LONDON
DISPOSAL PLANT
D.B. 136 PG 409
 - Ⓘ 4.43 ACRES
 - D.B. 213 PG 243
 - Ⓙ 4.105 ACRES
 - LONDON DISPOSAL
PLANT
D.B. 213 PG 243
 - Ⓚ 1.504 ACRES



ODOT R/W PLAN
MADISON COUNTY
S.H. 243 SEC. E
SHEETS 29/30 & 30/30

COTTRILL SURVEYING, L.L.C.
8256 S.R. 207 N.E. MT. STERLING, OHIO 43143 PH. (740) 869-3811

**ANNEXATION TO CITY OF LONDON,
VMS 8846, UNION TOWNSHIP,
MADISON COUNTY, STATE OF OHIO.
SURVEYED FOR CITY OF LONDON.**

DATE DRAWN: 7/21/11	SCALE: 1"=200' 200' 100' 0 200'	CREW: MW
JOB # S110705		DWN. BY: RC
F. B. #		CK. BY:

22.0100 Acre Tract
Annexation
Surveyed for the City of London

The following described 22.0100 acre tract is situated in the State of Ohio, Madison County, Union Township, VMS 8846, and being part of a 1.0806 acre tract conveyed to the City of London by Official Record _____, page _____, all of a 11.3121 acre tract conveyed to the City of London by Official Record 125, page 495, all of a 4.43 acre tract conveyed to the City of London Disposal Plant by Deed Book 136 page 409, all of a 4.105 acre tract conveyed to the City of London Disposal Plant by Deed Book 213 page 243, and all of a 1.504 acre tract conveyed to the London Disposal Plant by Deed Book 213 page 243, and being more particularly described as follows:

Beginning at an iron pin and cap previously set at the northeast corner of said 1.0806 acre tract, in the north right-of-way line of State Route 56 (60 ft. right-of-way), also corner to a 136.1594 acre tract conveyed to David G. Hester and Ann Hester Bell, Living Trust by Official Record 180 page 1887;

Thence, with the east line of said 1.0806 acre tract, South 26° 10 minutes 36 seconds West a distance of 32.85 ft. to a point in the centerline of said State Route 56 and the northeast corner of said 11.3121 acre tract, and the northwest corner of a 9.0450 acre tract conveyed to James A. Griffin Bishop (Cemetery);

Thence, with the west line of said 9.0450 acre tract, South 26° 10 minutes 36 seconds West, passing a 3/4 inch "T" bar and cap found at 30.00 ft., a total distance of 434.55 ft. to a 3/4 inch "T" bar and cap found corner to an 81.3794 acre tract conveyed to David G. Hester and Ann Hester Bell, Living Trust by Official Record 180 page 1887;

Thence, with said 81.3794 acre tract the following 5 courses:

- 1) South 26° 10 minutes 36 seconds West a distance of 356.40 ft. to an iron pin and cap previously set
- 2) South 83° 04 minutes 04 seconds West a distance of 377.60 ft. to an iron pin and cap set previously
- 3) North 55° 15 minutes 47 seconds West a distance of 663.19 ft. to an iron pin and cap previously set
- 4) North 00° 15 minutes 43 seconds East a distance of 180.19 ft. to an iron pin and cap previously set
- 5) North 31° 11 minutes 04 seconds East a distance of 527.06 ft. to an iron pin and cap previously set at the southwest corner of a 2.000 acre tract conveyed to the City of London by Official Record 115 page 1929;

Thence, with said 2.000 acre tract the following 2 courses:

- 1) South 52° 27 minutes 38 seconds East a distance of 200.60 ft. to an iron pin and cap previously set
- 2) North 31° 11 minutes 04 seconds East, passing a 5/8 inch diameter Rebar and aluminum cap stamped " NCB 5969" found at 383.39 ft., a total distance of 411.02 ft. to a point in the southwest line of said 1.0806 acre tract;

Thence, with a new line across said 1.0806 acre tract, North 31° 11 minutes 04 seconds East a distance of 38.14 ft. to a point in the north line of said 1.0806 acre tract also being in the line of said 136.1594 acre tract;

Thence, with said 136.1594 and 1.0806 acre tracts the following 2 courses:

- 1) South 42° 05 minutes 00 seconds East a distance of 273.90 ft., from which a 6 in. diameter concrete right-of-way monument is north 0.13 ft. and east 0.02 ft.,
- 2) with a curve to the left, 1011.73 ft. radius, 524.13 ft. arc length, chord bears South 56° 55 minutes 28 seconds East a chord length of 518.29 ft. returning to the point beginning containing **22.0100 Acres** more or less, of which 0.6809 acres more or less is part of said 1.0806 acre tract, 11.3121 acres more or less is all of said 11.3121 acre tract, 4.4094 acres

more or less is all of said 4.43 acre tract, 4.10563 acres more or less is all of said 4.105 acre tract, 1.5013 acres more or less is all of said 1.504 acre tract.

Bearings are based on the centerline of State Route 56 (North 42° 05 minutes West) as shown on .right-of-way plan, Madison County, S.H. 243 SEC. E. sheet 29/30.

This deed is subject to and with the benefit of all legal highways, restrictions, easements, limitations, and reservations, of record, if any and to zoning restrictions which have been imposed thereon, if any.

All iron pins set are 5/8 inch diameter rebar with yellow plastic caps stamped "Cottrill L.L.C. 6858."

This description is based on a field survey performed July 21, 2011 by James R. Cottrill registration #6858. (Job #S110705A)

James R. Cottrill, P.S.

3.4616 Acre Tract
Annexation
Surveyed for the City of London

The following described 3.4616 acre tract is situated in the State of Ohio, Madison County, Union Township, VMS 8846, and being all of a 0.6086 acre tract conveyed to the City of London by Official Record _____, page _____, all of a 0.2560 acre tract conveyed to the City of London by Official Record _____, page _____, all of a 0.0355 acre tract conveyed to the City of London by Official Record _____, page _____, all of a 0.0836 acre tract conveyed to the City of London by Official Record _____, page _____, all of a 0.0939 acre tract conveyed to the City of London by Official Record _____, page _____, all of a 2.000 acre tract conveyed to the City of London by Official Record 115 page 1929, and part of a 1.0806 acre tract conveyed to the City of London by Official Record _____, page _____, and being more particularly described as follows:

Beginning at an iron pin and cap set at the southwest corner of said 0.6086 acre tract, at the intersection of the south right-of-way line of State Route 56 (60 ft. right-of-way) with the City of London Corporation Line, also corner to an 81.3794 acre tract conveyed to David G. Hester and Ann Hester Bell, Living Trust by Official Record 180 page 1887;

Thence, with said corporation line and the west line of said 0.6086 acre tract, North 46° 26 minutes 00 seconds East a distance of 32.24 ft. to a point in the centerline of said State Route 56 at station 842+10.3;

Thence, continuing with said corporation line, North 46° 26 minutes 00 seconds East a distance of 37.71 ft. to a point in the south line of Lot 4 of said Toland Addition;

Thence, with said Lot 4 the following 2 courses:

- 1) South 65° 16 minutes 00 seconds East a distance of 9.73 ft. to an iron pin and cap set at the southwest corner of said Graham Avenue
- 2) North 24° 28 minutes 25 seconds East a distance of 24.18 ft. to a point in the City of London Corporation line

Thence, with said corporation line North 46° 26 minutes 00 seconds East a distance of 133.71 ft. to a point in the east line of said Graham Avenue;

Thence, with the east line of said Graham Avenue, South 24° 28 minutes 25 seconds West a distance of 157.01 ft. to an iron pin and cap set at the south east corner of said Graham Avenue being the north right-of-way line of State Route 56, and the southwest corner of a 0.10 acre tract conveyed to Main Street Rentals Inc. by Official Record 102 page 2275;

Thence, with the north right-of-way line of said State Route 56 and the south line of said 0.10 acre tract and a 0.11 acre tract also conveyed to Main Street Rentals Inc. by Official Record 102 page 2275, the following 2 courses:

- 1) with a curve to the right, radius of 944.25 ft., arc length of 86.19 ft., chord bears South 57° 38 minutes 52 seconds East a distance of 86.16 ft. to a point from which a 6 in. diameter concrete right-of-way monument is South 0.04 ft. and West a 0.11 ft.
- 2) South 55° 02 minutes 00 seconds East, passing a 5/8 inch diameter iron pin found at the southwest corner of a 0.12707 acre tract conveyed to Loria White by Official Record 108, Page 877 at 4.30 ft., and continuing along the south line of said 0.12707 acre tract, a total distance of 60.27 ft. to a 5/8 inch diameter iron pin found in the west line of a 0.1445 acre tract conveyed to Michael E. Penwell by Deed Book 292 page 646;

Thence, with the south line of said 0.1445 acre tract, the following 2 courses:

- 1) South 55° 02 minutes 00 seconds East a distance of 9.84 ft. from which a 6 in. diameter concrete right-of-way monument found is North 0.05 ft. and West 0.01 ft.
- 2) with a curve to the right, radius equals 1131.67 ft., arc length equals 41.63 ft., chord bears South 53° 58 minutes 46 seconds East, a distance of 41.62 ft. to an iron pin and cap set at the southwest corner of a 1.4564 acre tract also conveyed to Michael E. Penwell by Deed Book 292, page 646, said iron pin and cap is also at the northeast corner of said 0.0355 acre tract;

Thence, with the south line of said 1.4564 acre tract, with a curve to the right, said curve having a radius of 1131.67 ft., arc length equals 121.27 ft., chord bears South 49° 51 minutes 21 seconds East a distance

of 121.21 ft. to an iron pin and cap set at the southwest corner of a 0.9061 acre tract conveyed to Ronald and Cathy Mullins by Official Record 233 page 2091, said iron pin and cap is at the northeast corner of said 0.0836 acre tract;

Thence, with the south line of said 0.9061 acre tract, the following two courses:

- 1) with a curve to the right, radius of 1131.67 ft., arc length of 92.88 ft., chord bears South 44° 26 minutes 05 seconds East a distance of 92.86 ft. to a point from which a 6 in. diameter concrete right-of-way monument is North 0.01 ft. and East a 0.33 ft.
- 2) South 42° 05 minutes 00 seconds East a distance of 43.29 ft. to a wood fence post found at the southwest corner of a 136.1594 acre tract conveyed to David G. Hester and Ann Hester Bell, Living Trust by Official Record 180 page 1887, said post is also at the northwest corner of said 1.0806 acre tract;

Thence, with the south line of said 136.1594 acre tract and the North right-of-way line of said State Route 56, South 42° 05 minutes 00 seconds East a distance of 561.46 ft. to a point in said line;

Thence, with a new line across said 1.0806 acre tract, South 31° 11 minutes 04 seconds West a distance of 38.14 ft. to a point in the centerline of said State Route 56 and the northeast corner of said 2.000 acre tract;

Thence, with said 2.000 acre tract the following 3 courses:

- 1) South 31° 11 minutes 04 seconds West, passing a 5/8 inch diameter rebar and aluminum cap stamped "NCB 5969" found 27.63 ft., a total distance of 411.02 ft. to an iron pin and cap previously set
- 2) North 52° 27 minutes 38 seconds West a distance of 200.60 ft. to an iron pin and cap set in the southeast line of said Hester's 81.3794 acre tract
- 3) North 31° 11 minutes 04 seconds East, with said 81.37 94 acre tract, a distance of 424.24 ft. to the southernmost corner of said 0.6086 acre tract, said corner bears South 31° 11 minutes 04 seconds East a distance of 1.75 ft. from a 5/8 inch diameter rebar and aluminum cap stamped "NCB 5969" found;

Thence, with the southwest right-of-way line of said State Route 56 and the north line of said 81.3794 acre tract , the following 5 courses:

- 1) North 42° 05 minutes 00 seconds West a distance of 414.60 ft. to a point from which a 6 in. diameter concrete right-of-way monument is South 0.05 ft. and West a 0.14 ft.
- 2) with a curve to the left, radius equals 1071.67 ft., arc length is 242.21 ft., chord bears North 48° 33 minutes 30 seconds West a distance of 241.70 ft. to a point from which a 6 in. diameter concrete right-of-way monument is North 0.30 ft. and East 0.00 ft.
- 3) North 55° 02 minutes 00 seconds West a distance of 70.10 ft.
- 4) with a curve to the left, radius equals 884.25 ft., arc length equals 157.94 ft., chord bears North 60° 09 minutes 00 seconds West a distance of 157.73 ft.

North 65° 16 minutes 00 seconds West a distance of 3.27 ft. returning to the point beginning containing **3.4616 Acres** more or less, of which 0.6086 acres more or less is all of said 0.6086 acre tract, 0.2560 acres more or less is all of said 0.2560 acre tract, 0.0355 acres more or less is all of said 0.0355 acre tract, 0.0836 acres more or less is all of said 0.0836 acre tract, 0.0939 acre tract is all of said 0.0939 acre tract, 1.9843 acres more or less is all of said 2.000 acre tract, and 0.3997 acres more or less is part of said 1.0806 acre tract.

Bearings are based on the centerline of State Route 56 (North 42° 05 minutes West) as shown on .right-of-way plan, Madison County, S.H. 243 SEC. E. sheet 29/30.

This deed is subject to and with the benefit of all legal highways, restrictions, easements, limitations, and reservations, of record, if any and to zoning restrictions which have been imposed thereon, if any.

All iron pins set are 5/8 inch diameter rebar with yellow plastic caps stamped "Cottrill L.L.C. 6858."

This description is based on a field survey performed July 21, 2011 by James R. Cottrill registration #6858. (Job #S110705)

James R. Cottrill, P.S.