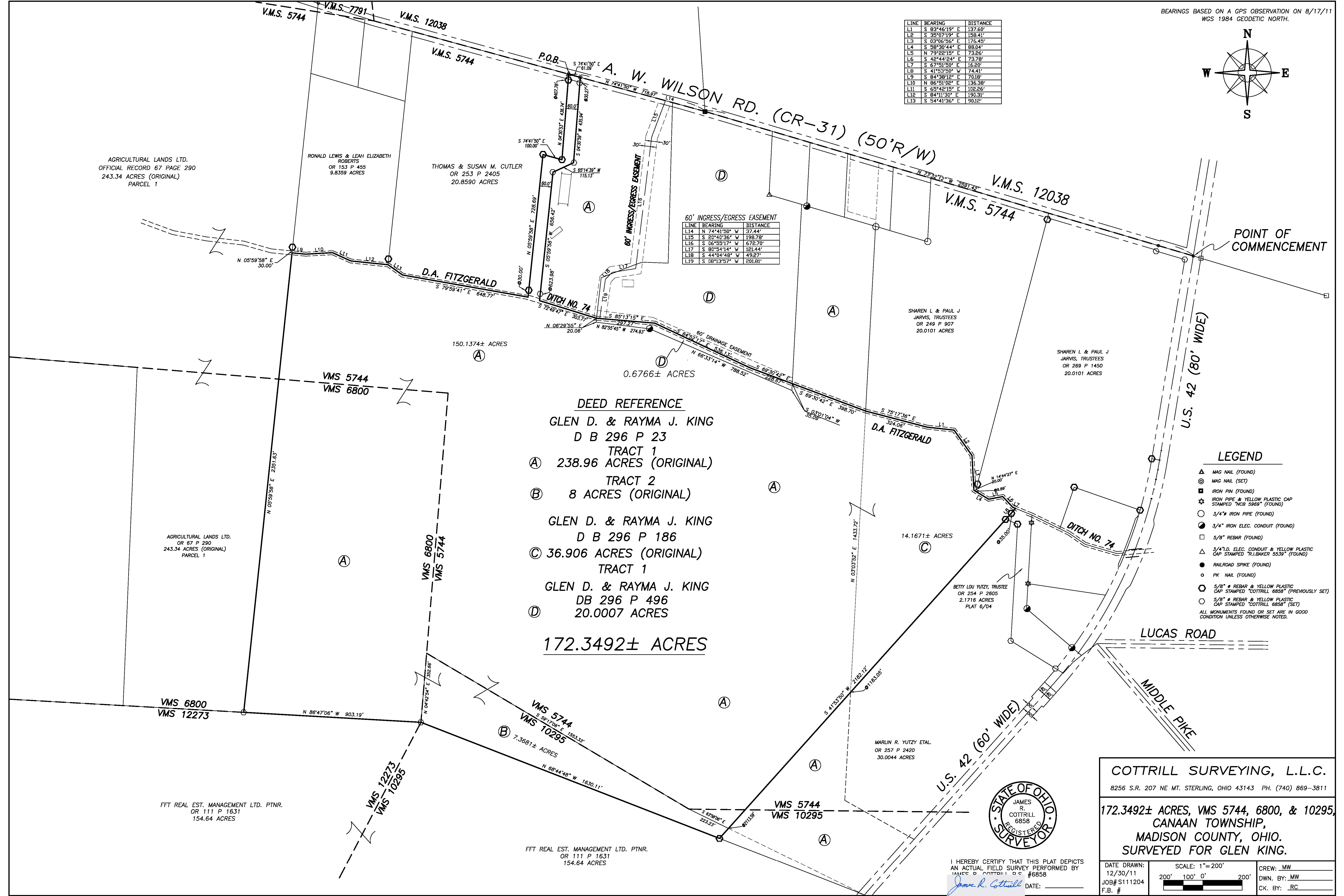


LINE	BEARING	DISTANCE
L1	S 83°46'19" E	137.60'
L2	S 35°07'19" E	138.41'
L3	S 03°06'56" E	176.45'
L4	S 58°30'44" E	88.04'
L5	N 79°22'15" E	73.26'
L6	S 42°44'24" E	73.78'
L7	S 67°51'50" E	116.20'
L8	S 41°53'50" W	74.41'
L9	S 84°38'12" E	70.18'
L10	N 86°51'02" E	136.38'
L11	S 65°42'15" E	102.26'
L12	S 84°11'30" E	190.31'
L13	S 54°41'36" E	90.12'

60' INGRESS/EGRESS EASEMENT

LINE	BEARING	DISTANCE
L14	N 74°41'50" W	37.44'
L15	S 20°40'36" W	198.78'
L16	S 05°55'17" W	672.70'
L17	S 80°54'14" W	121.44'
L18	S 44°04'48" W	49.27'
L19	S 08°13'57" W	201.81'



DEED REFERENCE

GLEN D. & RAYMA J. KING
D B 296 P 23
TRACT 1
A 238.96 ACRES (ORIGINAL)
TRACT 2
B 8 ACRES (ORIGINAL)

GLEN D. & RAYMA J. KING
D B 296 P 186
C 36.906 ACRES (ORIGINAL)
TRACT 1

GLEN D. & RAYMA J. KING
DB 296 P 496
D 20.0007 ACRES

172.3492± ACRES

LEGEND

- ▲ MAG NAIL (FOUND)
 - MAG NAIL (SET)
 - ⊙ IRON PIN (FOUND)
 - ★ IRON PIPE & YELLOW PLASTIC CAP STAMPED "NCB 5968" (FOUND)
 - 3/4" IRON PIPE (FOUND)
 - 3/4" IRON ELEC. CONDUIT (FOUND)
 - 5/8" REBAR (FOUND)
 - △ 3/4" I.D. ELEC. CONDUIT & YELLOW PLASTIC CAP STAMPED "R.L.BAKER 5539" (FOUND)
 - RAILROAD SPIKE (FOUND)
 - PK NAIL (FOUND)
 - 5/8" # REBAR & YELLOW PLASTIC CAP STAMPED "COTTRILL 6858" (PREVIOUSLY SET)
 - 5/8" # REBAR & YELLOW PLASTIC CAP STAMPED "COTTRILL 6858" (SET)
- ALL MONUMENTS FOUND OR SET ARE IN GOOD CONDITION UNLESS OTHERWISE NOTED.



I HEREBY CERTIFY THAT THIS PLAT DEPICTS AN ACTUAL FIELD SURVEY PERFORMED BY JAMES R. COTTRILL, D.S. #6858
James R. Cottrill DATE: _____

COTTRILL SURVEYING, L.L.C.
8256 S.R. 207 NE MT. STERLING, OHIO 43143 PH. (740) 869-3811

172.3492± ACRES, VMS 5744, 6800, & 10295, CANAAN TOWNSHIP, MADISON COUNTY, OHIO. SURVEYED FOR GLEN KING.

DATE DRAWN: 12/30/11	SCALE: 1"=200'	CREW: MW
JOB# S111204	200' 100' 0' 200'	DWN. BY: MW
F.B. #		CK. BY: RC

Cottrill Surveying, LLC

8256 St. Rt. 207 N.E. Mt. Sterling, Ohio 43143, Ph. (740) 869-3811

0.6766 Acre Tract Surveyed for Glen King

The following described 0.6766 acre tract is situated in the State of Ohio, Madison County, Canaan Township, VMS 5744, and being part a 20.0007 acre tract conveyed to Glen D. and Rayma J. King by Deed Book 296 page 496, and being more particularly described as follows:

Commencing at a mag nail found at the centerline intersection of US 42 (80 ft. right-of-way) with the centerline of A. W. Wilson Road (County Road 31)(50 ft. right-of-way);

Thence, with the centerline of said A. W. Wilson Road the following two courses:

- 1) North 73° 32 minutes 12 seconds West a distance of 2591.42 ft. to an iron pin found
- 2) North 74° 41 minutes 50 seconds West a distance of 718.97 ft. to a mag nail found at the northeast corner of a 20.8590 acre tract conveyed to, Thomas and Susan M. Cutler by Official Record 253 page 2405, and the northwest corner of the residual of a 238.96 acre tract conveyed to Glen D. and Rayma J. King by Deed Book 296 page 23;

Thence, with the centerline of said A. W. Wilson Road, South 74° 41 minutes 50 seconds East a distance of 61.09 ft. to a mag nail set;

Thence, across said 238.96 acre tract the following 4 new courses:

- 1) South 04° 30 minutes 59 seconds West, passing an iron pin and cap set at 30.27 ft., a total distance of 435.94 ft. to an iron pin and cap set
- 2) South 65° 14 minutes 39 seconds West a distance of 115.13 ft. to an iron pin and cap set
- 3) South 05° 59 minutes 58 seconds West, passing an iron pin and cap set at 623.98 ft., a total distance of 656.42 ft. to a point in the centerline of D.A. Fitzgerald Ditch #74
- 4) South 72° 49 minutes 47 seconds East, with the centerline of said ditch, a distance of 303.77 ft. to a point in the west line of said 20.0007 acre tract and **The True Point of Beginning**;

Thence, continuing with the centerline of said ditch and a new line across said 20.0007 acre tract, the following three new courses:

- 1) **South 85° 13 minutes 15 seconds East** a distance of **297.27 ft.**
- 2) **South 64° 52 minutes 17 seconds East** a distance of **536.13 ft.**
- 3) **South 69° 30 minutes 42 seconds East** a distance of **228.67 ft.** to a point in the east line of said 20.0007 acre tract;

Thence, with said 20.0007 acre tract the following 4 courses:

- 1) **South 03° 01 minute 04 seconds West** a distance of **35.09 ft.**
- 2) **North 66° 33 minutes 14 seconds West** a distance of **788.52 ft.** to a 3/4 inch diameter electrical iron conduit found
- 3) **North 82° 55 minutes 45 seconds West** a distance of **274.93 ft.**
- 4) **North 06° 29 minutes 55 seconds East** a distance of **20.06 ft.** returning to **The True Point of Beginning** containing **0.6766 Acres** more or less.

Bearings are based on a GPS observation on August 17, 2011, WGS 1984 Geodetic North.

This deed is subject to and with the benefit of all legal highways, restrictions, easements, limitations, and reservations, of record, if any and to zoning restrictions which have been imposed thereon, if any.

All iron pins set are 5/8 inch diameter rebar with yellow plastic caps stamped "Cottrill L.L.C. 6858."

This description is based on a field survey performed December 28, 2011 by James R. Cottrill registration #6858. (Job #S111204-0.6766AC)

James R. Cottrill,

**172.3492 Acre Tract
Surveyed for Glen King**

The following described 172.3492 acre tract is situated in the State of Ohio, Madison County, Canaan Township, VMS 5744, 6800, and 10295, and being part of the original 238.96 acre tract (Tract 1) and part of the original 8 acre tract (Tract 2) both tracts conveyed to Glen D. and Rayma J. King by Deed Book 296 page 23, and part of the original 36.906 acre tract (Tract 1) conveyed to Glen D. and Rayma J. King by Deed Book 296 page 186, also being part of a 20.0007 acre tract conveyed to Glen D. and Rayma J. King by Deed Book 296 page 496, and being more particularly described as follows:

Commencing at a mag nail found at the centerline intersection of US 42 (80 ft. right-of-way) with the centerline of A. W. Wilson Road (County Road 31)(50 ft. right-of-way);

Thence, with the centerline of said A. W. Wilson Road the following two courses:

- 1) North 73° 32 minutes 12 seconds West a distance of 2591.42 ft. to an iron pin found
- 2) North 74° 41 minutes 50 seconds West a distance of 718.97 ft. to a mag nail found at the northeast corner of a 20.8590 acre tract conveyed to, Thomas and Susan M. Cutler by Official Record 253 page 2405, and the northwest corner of the residual of said 238.96 acre tract and
The True Point of Beginning;

Thence, with the centerline of said A. W. Wilson Road, **South 74° 41 minutes 50 seconds East** a distance of **61.09 ft.** to a mag nail set;

Thence, across said 238.96 acre tract the following 4 new courses:

- 1) **South 04° 30 minutes 59 seconds West**, passing an iron pin and cap set at 30.27 ft., a total distance of **435.94 ft.** to an iron pin and cap set
- 2) **South 65° 14 minutes 39 seconds West** a distance of **115.13 ft.** to an iron pin and cap set
- 3) **South 05° 59 minutes 58 seconds West**, passing an iron pin and cap set at 623.98 ft., a total distance of **656.42 ft.** to a point in the centerline of D.A. Fitzgerald Ditch #74
- 4) **South 72° 49 minutes 47 seconds East**, with the centerline of said ditch, a distance of **303.77 ft.** to a point in the west line of said 20.0007 acre tract;

Thence, continuing with the centerline of said ditch and a new line across said 20.0007 acre tract, the following three new courses:

- 1) **South 85° 13 minutes 15 seconds East** a distance of **297.27 ft.**
- 2) **South 64° 52 minutes 17 seconds East** a distance of **536.13 ft.**
- 3) **South 69° 30 minutes 42 seconds East** a distance of **228.67 ft.** to a point in the east line of said 20.0007 acre tract;

Thence, with a new line across said original 238.96 acre tract and the centerline of said ditch, **South 69° 30 minutes 42 seconds East** a distance the **398.70 feet** to the southwest corner of a 20.0101 acre tract conveyed to Sharen L. and Paul J. Jarvis, Trustees by Official Record 249 page 907;

Thence, continuing with the centerline of said ditch and the south line of said 20.0101 acre tract the following 4 courses:

- 1) **South 75° 17 minutes 36 seconds East** a distance of **324.06 ft.**
- 2) **South 83° 46 minutes 19 seconds East** a distance of **137.60 ft.**
- 3) **South 35° 07 minutes 19 seconds East** a distance of **158.41 ft.**
- 4) **South 03° 06 minutes 56 seconds East** a distance of **176.45 ft.**

Thence, continuing with the centerline of said ditch and the south line of said 20.0101 acre tract, **South 58° 30 minutes 44 seconds East**, passing the southwest corner of a 20.0101 acre tract conveyed to Sharen L. and Paul J. Jarvis, Trustees by Official Record 269 page 1450 at 9.89 ft., a total distance of **88.04 feet;**

Thence, continuing with the centerline of said ditch and the south line of said 20.0101 acre tract the following 3 courses:

- 1) **North 79° 22 minutes 15 seconds East** a distance of **73.26 ft.**
- 2) **South 42° 44 minutes 24 seconds East** a distance of **73.78 ft.**
- 3) **South 67° 51 minutes 50 seconds East** a distance of **16.20 ft.** to the northwest corner of a 2.1716 acre tract conveyed to Betty Lou Yutzy, Trustee by Official Record 254 page 2605;

Thence, with the northwest line of said 2.1716 acre tract and leaving said ditch, **South 41° 53 minutes 50 seconds West**, passing an iron pin and cap previously set on the south bank of said ditch at 35.00 ft.,

a total distance of **74.41 ft.** to an iron pin and cap previously set at the northwest corner of a 30.0044 acre tract conveyed to Marlin R. Yutzy, Et al by Official Record 257 page 2420;

Thence, with the northwest line of said 30.0044 acre tract, **South 41° 53 minutes 50 seconds West**, passing the west line of said original 36.906 acre tract at 1183.05 ft., also passing the northeast line of said original 8 acre tract at 2113.59 ft., a total distance of **2182.12 ft.** to an iron pin and cap previously set in the north line of a 154.64 acre tract conveyed to FFT Real Est. Management, LTD, Ptnr.;

Thence, with the north line of said 154.64 acre tract, the following two courses:

- 1) **North 68° 44 minutes 48 seconds West** a distance of **1630.11 ft.** to an iron pin and cap set at the southwest corner of said 8 acre tract
- 2) **North 86° 47 minutes 06 seconds West** a distance of **903.19 ft.** to an iron pin and cap set at the southeast corner of a 243.34 acre tract conveyed to Agricultural Lands, LTD. by Official Record 67 page 290;

Thence, with the east line of said 243.34 acre tract, **North 05° 59 minutes 58 seconds East** a distance of **2351.63 ft.** to the southwest corner of said Roberts' 9.8359 acre tract and in the centerline of said D. A. Fitzgerald Ditch, from said corner an iron pin and cap previously set bears North 05° 59 minutes 58 seconds East a distance of 30.00 ft.;

Thence, with the centerline of said ditch and the south line of said 9.8359 acre tract, the following 4 courses:

- 1) **South 84° 38 minutes 12 seconds East** a distance of **70.18 ft.**
- 2) **North 86° 51 minutes 02 seconds East** a distance of **136.38 ft.**
- 3) **South 65° 42 minutes 15 seconds East** a distance of **102.26 ft.**
- 4) **South 84° 11 minutes 30 seconds East** a distance of **190.31 ft.** to the southwest corner of said Cutler's 20.8590 acre tract

Thence, with the centerline of said ditch and the south line of said 20.8590 acre tract the following 2 courses:

- 1) **South 54° 41 minutes 36 seconds East** a distance of **90.12 ft.**
- 2) **South 79° 59 minutes 41 seconds East** a distance of **648.77 ft.** to the southeast corner of said 20.8590 acre tract;

Thence, with said 20.8590 acre tract, the following three courses:

- 1) **North 05° 59 minutes 58 seconds East**, passing an iron pin and cap previously set at 30.00 ft., a total distance of **728.69 ft.** to an iron pin and cap previously set
- 2) **South 74° 41 minutes 50 seconds East** a distance of **100.00 ft.** to an iron pin and cap previously set
- 3) **North 04° 30 minutes 53 seconds East**, passing an iron pin and cap previously set at 407.78 ft., a total distance of **436.74 ft.** returning to **The True Point Beginning** containing **172.3492 Acres** more or less, of which 150.1374 acres more or less is part of said 238.96 acre tract, 7.3681 acres more or less is part of said 8 acre tract, 14.1671 acres more or lands is part of said 36.906 acre tract, and 0.6766 acres more or less is part of said 20.0007 acre tract.

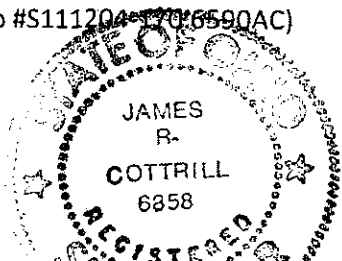
With the benefit of a 60 ft. wide Ingress/Egress Easement crossing said 238.96 and 20.0007 acre tracts, and extends from the south right-of-way line of said A. W. Wilson Road to the north line of the hereinabove described 170.6590 acre tract and is 30 feet left and right of the following described baseline: beginning at a point in the centerline of said A. W. Wilson Road, said point bears North 74° 41 minutes 50 seconds West a distance of 37.44 ft. from the north corner common to said tracts, thence, South 20° 40 minutes 36 seconds West a distance of 198.78 ft., South 06° 55 minutes 17 seconds West a distance of 672.70 ft., South 80° 54 minutes 14 seconds West a distance a 121.44 ft., South 44° 04 minutes 48 seconds West a distance of 49.27 ft., South 08° 13 minutes 57 seconds West a distance of 201.81 ft. to a point in the north line of said 170.6590 acre tract and the southern terminus of said easement, said easement is more clearly shown on plat accompanying this legal description.

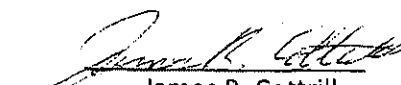
Bearings are based on a GPS observation on August 17, 2011, WGS 1984 Geodetic North.

This deed is subject to and with the benefit of all legal highways, restrictions, easements, limitations, and reservations, of record, if any and to zoning restrictions which have been imposed thereon, if any.

All iron pins set are 5/8 inch diameter rebar with yellow plastic caps stamped "Cottrill L.L.C. 6858."

This description is based on a field survey performed December 28, 2011 by James R. Cottrill registration #6858. (Job #S111204-7016590AC)




James R. Cottrill,