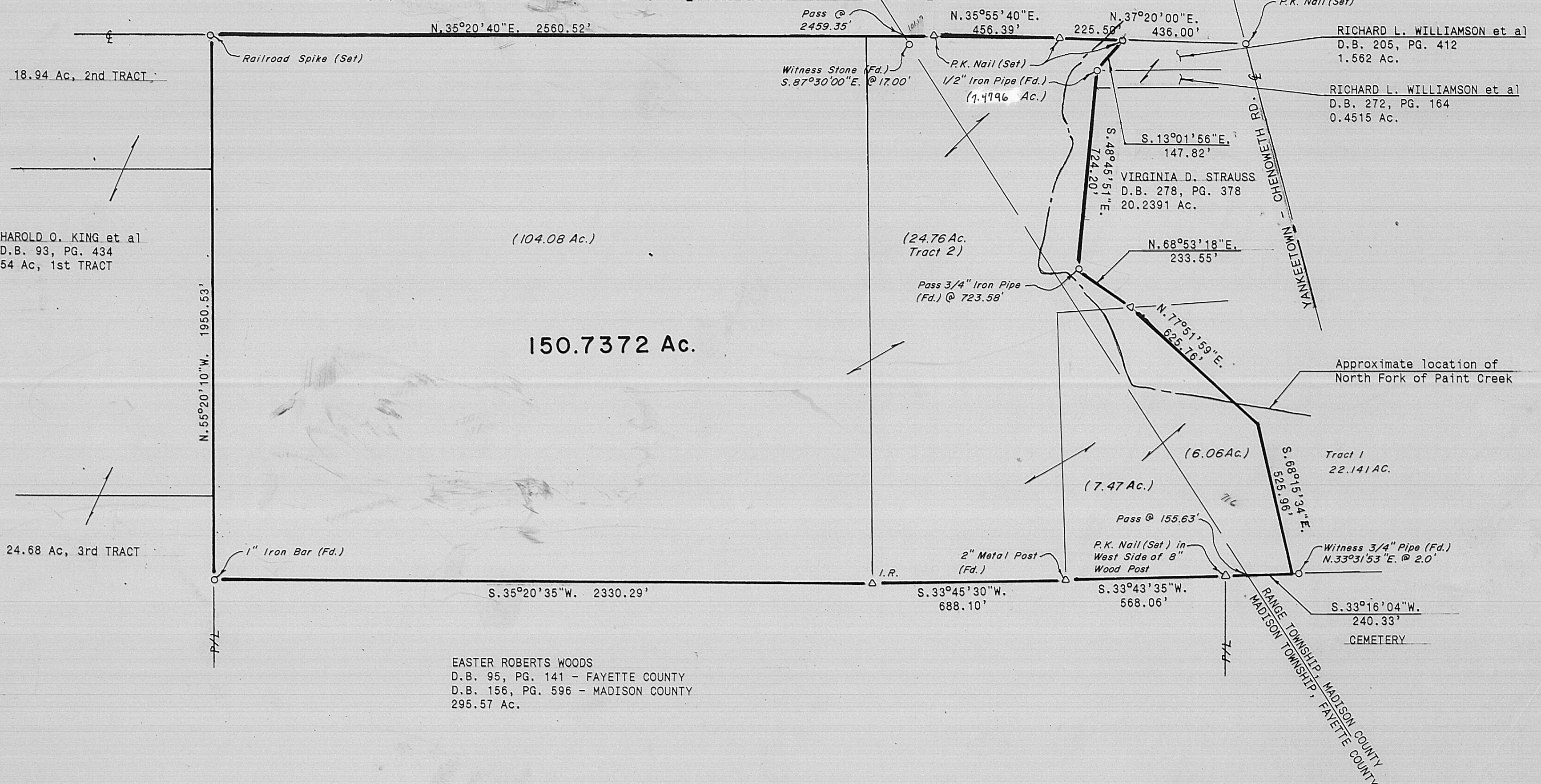


KELLOUGH ROAD (R/W MADISON CO. 60') [RANGE TOWNSHIP]  
KELLOUGH ROAD (R/W FAYETTE CO. 33') [MADISON TOWNSHIP]



150.7372 Ac.

EASTER ROBERTS WOODS  
D.B. 95, PG. 141 - FAYETTE COUNTY  
D.B. 156, PG. 596 - MADISON COUNTY  
295.57 Ac.

137.1976 Ac. - FAYETTE COUNTY  
13.5396 Ac. - MADISON COUNTY

DEED REFERENCE

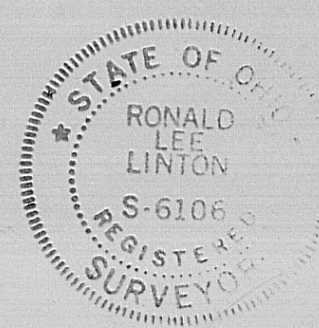
VIRGIL J. DELAY et al  
FAYETTE COUNTY  
D.B. 80, PG. 343  
104.08 Ac. (ALL)

22.141 Ac, TRACT I  
FAYETTE COUNTY - D.B. 92, PG. 453 - 7.47 Ac.  
MADISON COUNTY - D.B. 154, PG. 629 - 6.06 Ac.  
TOTAL 13.53 Ac.

48.06 Ac, TRACT II  
FAYETTE COUNTY - D.B. 92, PG. 453 - 24.76 Ac.  
MADISON COUNTY - D.B. 154, PG. 629 - 7.4796 Ac.  
TOTAL 32.2396 Ac.

NOTES

I.R. = 5/8" Iron Rod (Set) with plastic cap stamped "RL 6106."  
OCCUPATION: Roadway & Monumentation (Fd.)  
All monumentation is in good condition.  
REFERENCE BEARING: S.70°00'00"E. Centerline Yankeetown - Chenoweth Rd. as per 20.2391 Ac. Tract.



*Ronald L. Linton*

Ronald L. Linton, P.S. No. 6106

**Gale L. Helms & Assoc., Inc.**  
Consulting Engineers & Surveyors  
222 N. OAKLAND AVE.  
WASHINGTON C.H., OHIO 43160 PH. (614) 335-3816

SURVEY OF 150.7372 Ac.  
V.M.S. 9721  
MADISON TOWNSHIP, FAYETTE CO., OHIO  
RANGE TOWNSHIP, MADISON CO., OHIO

DATE: MARCH 19, 1991 SCALE: 1"=300'