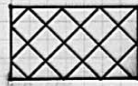

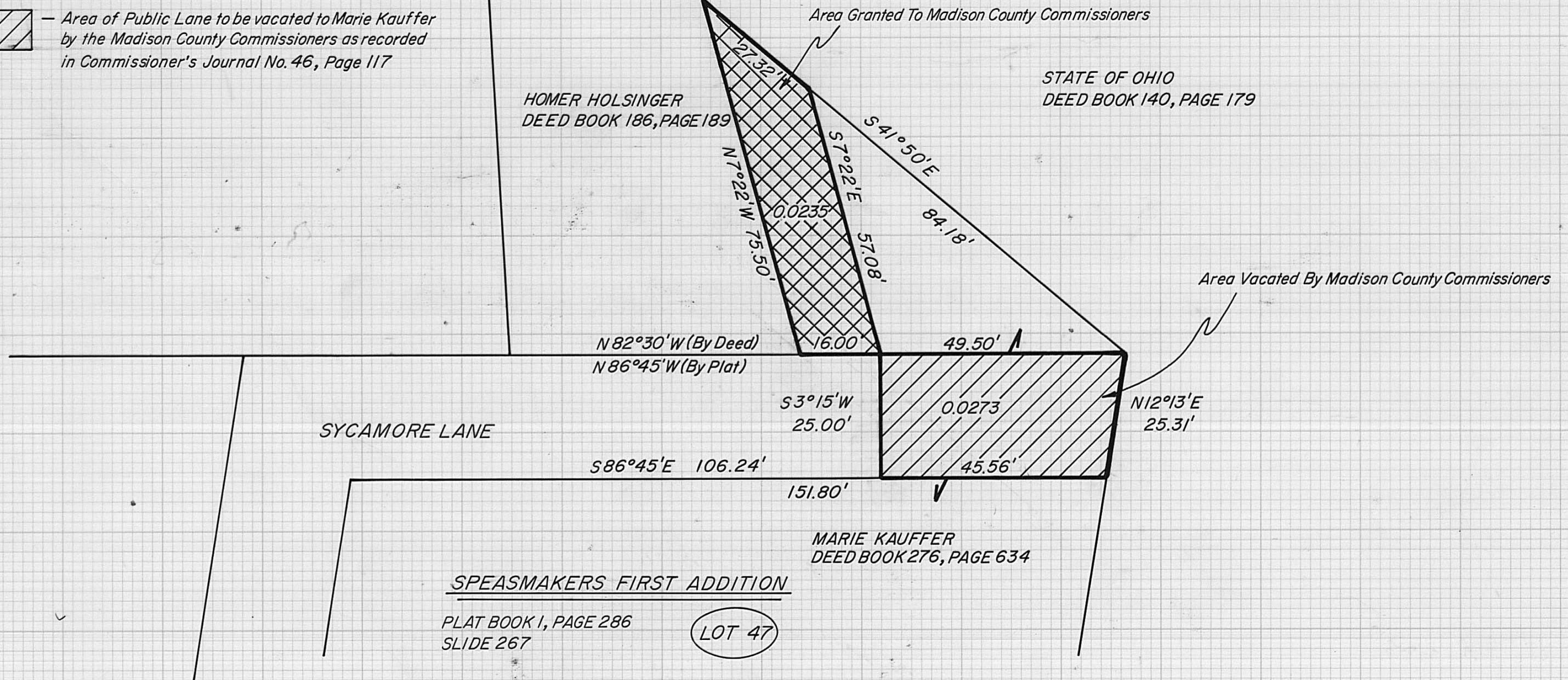
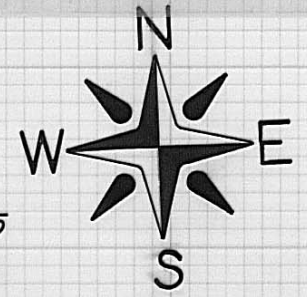
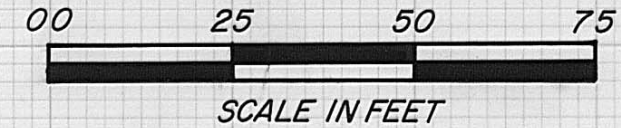


-  - Parcel to be deeded from Marie Kauffer to the Madison County Commissioners
-  - Area of Public Lane to be vacated to Marie Kauffer by the Madison County Commissioners as recorded in Commissioner's Journal No. 46, Page 117



PLAT SHOWING A 0.0235 AC. PARCEL AND A 0.0273 AC. PARCEL LOCATED IN THE STATE OF OHIO, COUNTY OF MADISON, TOWNSHIP OF UNION, V.M.S. 6029 AND 6302.