

DEED S86° 41' 00" E — 586.240' 33" 2
 DEED N87° 57' E — 978.81'
 DEED S86° 40' 33" 2
 DEED N87° 57' E — 978.81'

ROGER JAY RADABAUGH AND BETTY RADABAUGH CONVEYED BY WARRANTY DEED TO DEAN MARSHAL AND FAITH L. MARSHAL 18.170 ACRES TRANSFERRED NOVEMBER 30, 1916 RECORDED DEED VOL. 233 AT PG. 413, 414 & 415

ELLEN MAE MEADOWS & LESTER MEADOWS CONVEYED TO DEAN MARSHAL AND FAITH MARSHAL 17.718 ACRES BY D.B. 248 AT PG. 518 TRANSFERRED JULY 18, 1979

AERIAL PARCEL 194 TAX PARCEL N° 21.00335.000 COMBINED 351.89 ACRES (17.718 ACRES) TOTAL

AERIAL PARCEL 513 TAX PARCEL N° 21.00335.000 COMBINED 351.89 ACRES (18.170 ACRES) TOTAL

AERIAL PARCEL N° 591 PART OF 22.405 ACRES TAX PARCEL N° 21.00257.000 DEED VOL. 258 AT PAGE 157 FILED TRANSFERRED SEPT. 30, 1982 AMAZA H. SELLS & ETHEL J. SELLS CONVEYED BY WARRANTY DEED ALL OF SCOTO FARM UNIT N° 4 AS PER PLAT BOOK 1 AT PAGE 272 TO: RAY SELF AND EVELYN J. SELF HUSBAND & WIFE

ORIGINAL 55.998 ACRES (RESERVING UNTO GRANTORS LIFE ESTATE IN HOUSE AND YARD AREA) (SEE VOL. 135 PG. 353 REFERENCE MINERAL RIGHTS & ACCESS)

UNIT N° 4
 UNIT N° 3
 UNIT N° 2
 UNIT N° 1

UNIT N° 7
 UNIT N° 6
 UNIT N° 5

AERIAL PARCEL N° 156 ORIGINAL 52.996 ACRES AUDITOR TAX PARCEL N° 21.00166.000 RUTH IRENE (CRAIG) SHUTTS AKA MRS. VERNON SHUTTS WAYNESVILLE, OHIO

AERIAL PARCEL N° 179 GEORGE E. PICKENS & SYLVIA PICKENS CONVEYED THE TOTAL OF SCOTO FARM UNIT N° 6 BY WARRANTY DEED TO OSCAR H. DIALS & JUANITA DIALS TRANSFERRED FEBRUARY 18, 1955 RECORDED FEBRUARY 21, 1955 DEED VOLUME 150 AT PAGE 679 PART OF TOTAL 106.421 ACRES CHARGED AS TAX PARCEL N° 21.00085.000

UNITED STATES OF AMERICA CONVEYED BY QUIT CLAIM DEED SCOTO FARM UNIT N° 3 AS DELINEATED IN P.B. 1 AT PG. 272 56.993 ACRES (PART OF CURRENT 106.421 ACRES SHOWN AS AUDITOR'S TAX PARCEL N° 21.00085.000) TO OSCAR H. DIALS AND JUANITA DIALS TRANSFERRED SEPT. 21, 1943 RECORDED DEED VOL. 194 PG. 23

AERIAL PARCEL N° 175 DEED VOL. 194 PG. 23

RESERVING TO UNITED STATES OF AMERICA 3/4 OIL, GAS, COAL, AND OTHER MINERAL RIGHTS. (SEE DEED)

ORIGINAL 55.993 ACRES

OSCAR H. DIALS & JUANITA L. DIALS CONVEYED BY WARRANTY DEED 1.566 ACRES TO JAMES R. FOLSOM TRANSFERRED OCTOBER 13, 1976 RECORDED IN DEED VOL. 232 AT PAGES 480, 481 & 482 AUDITOR TAX PARCEL N° 21.00115.000 # 6756 DYER ROAD MT. STERLING, OHIO 43143

UNIT N° 3
 UNIT N° 2
 UNIT N° 1

UNIT N° 7
 UNIT N° 6
 UNIT N° 5

HORIZONTAL GRAPHIC SCALE SCALE: 1" = 200'

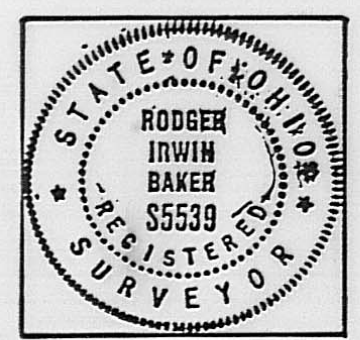
I HEREBY CERTIFY THAT THIS PLAT HAS BEEN PREPARED BY ME BASED ON A CURRENT FIELD SURVEY MADE IN JANUARY 1988 WITH ALL MARKERS HAVING BEEN FOUND OR SET AS DELINEATED. THE DEEDS REVIEWED ARE AS FOLLOWS:

DEED VOLUME	PAGE	DEED VOLUME	PAGE
258	159-160	135	353
134	23	232	480, 481, 482
226	151, 252	232	109, 110
233	43, 414, 415	248	518, 519
255	214, 219	256	588, 589
150	679	184	ALL 222, 225
P.B. 1	PG. 272		

IRON PIPES SET BY ME ARE 3/4 INCH IN DIAMETER BY 30 INCHES TO 60 INCHES LONG WITH A CAPPED TOP STAMPED R.2.BAKER S-05539.

REQUESTED BY RAY SELF AND DEAN MARSHAL.

Ray Quinn Baker OHIO SURVEYOR REG. N° S-05539
 RODGER IRWIN BAKER JAN. 28, 1988
 9430 NIDORA TOOPS ROAD
 MT. STERLING, OHIO 43143



PLAT OF FIELD SURVEYS — TWO PARCELS SPLIT OUT (A) AND (B) FOR RAY SELF AND DEAN MARSHAL ALONG DYER ROAD TWP. #66 IN VMS N° 6497 RANGE TOWNSHIP MADISON COUNTY, OHIO SCALE: AS SHOWN SURVEYED IN JANUARY, 1988

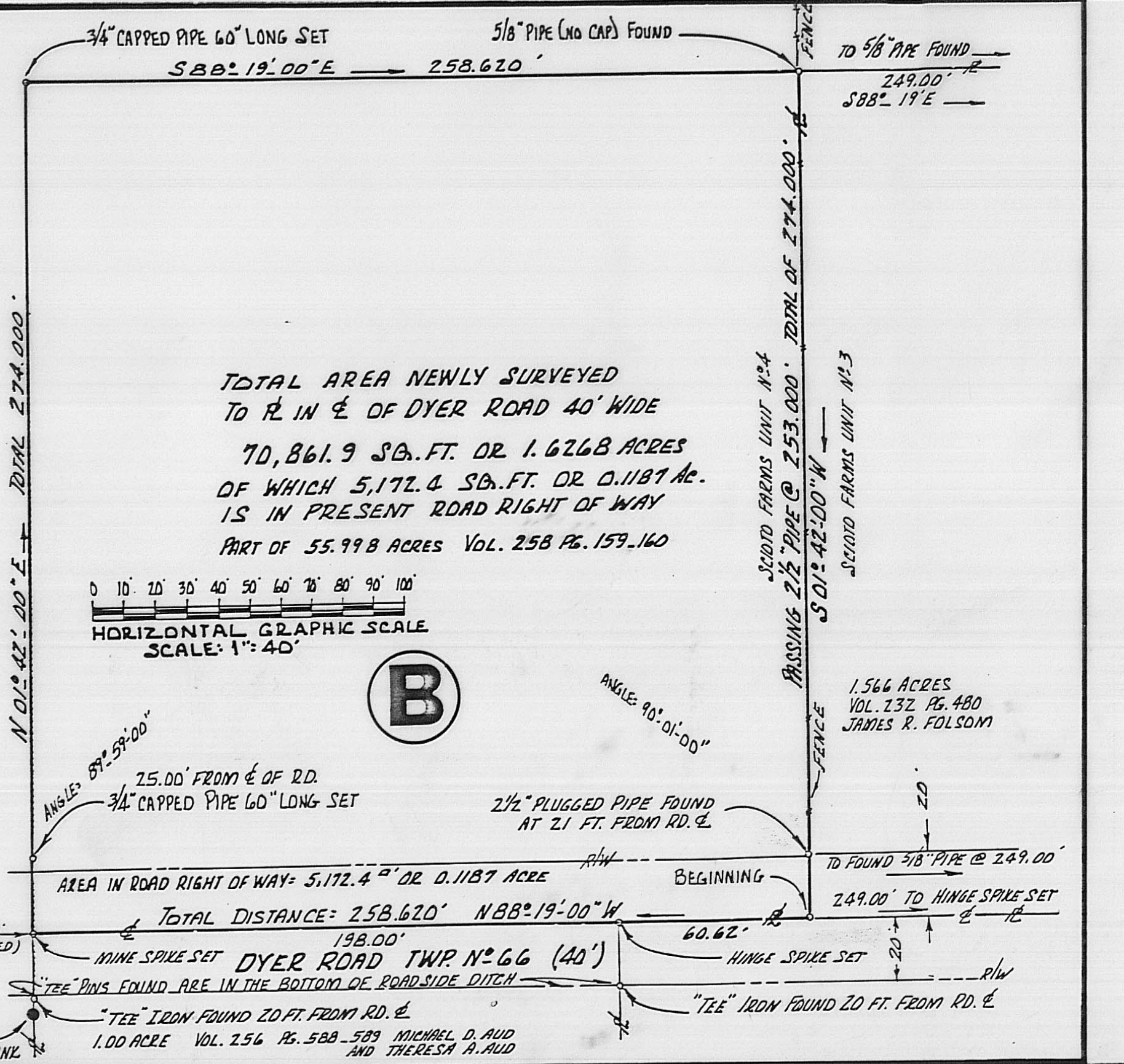
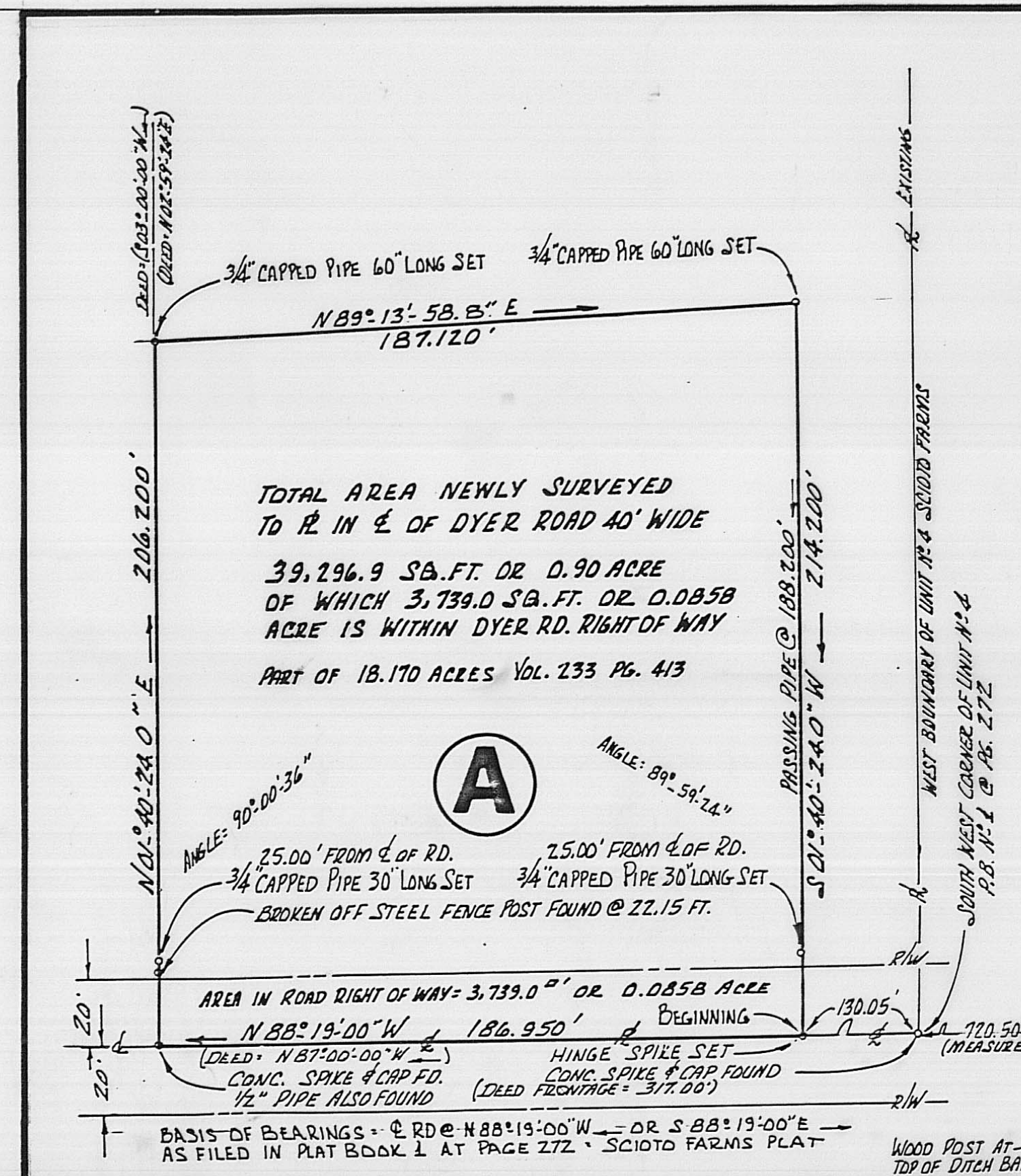
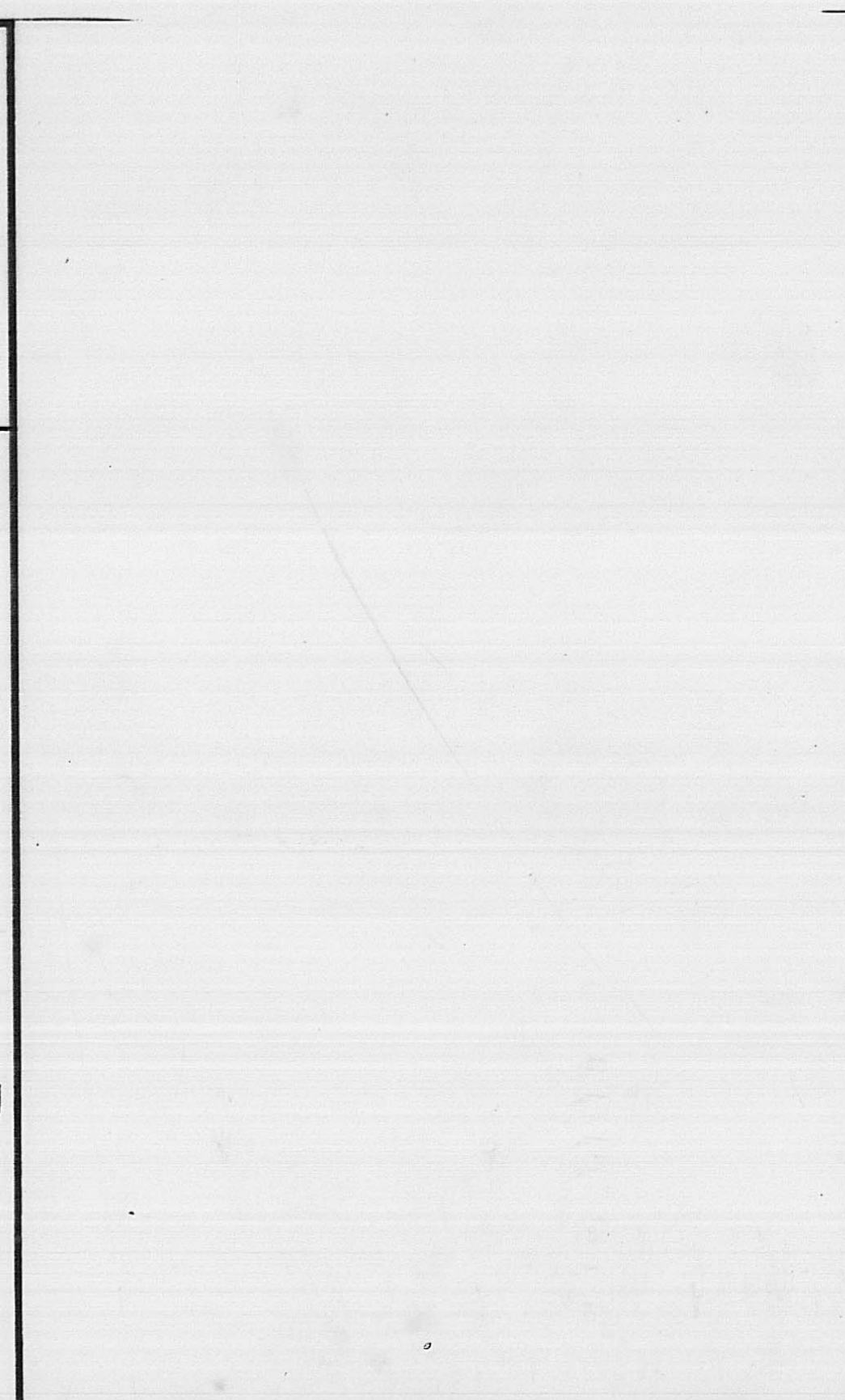
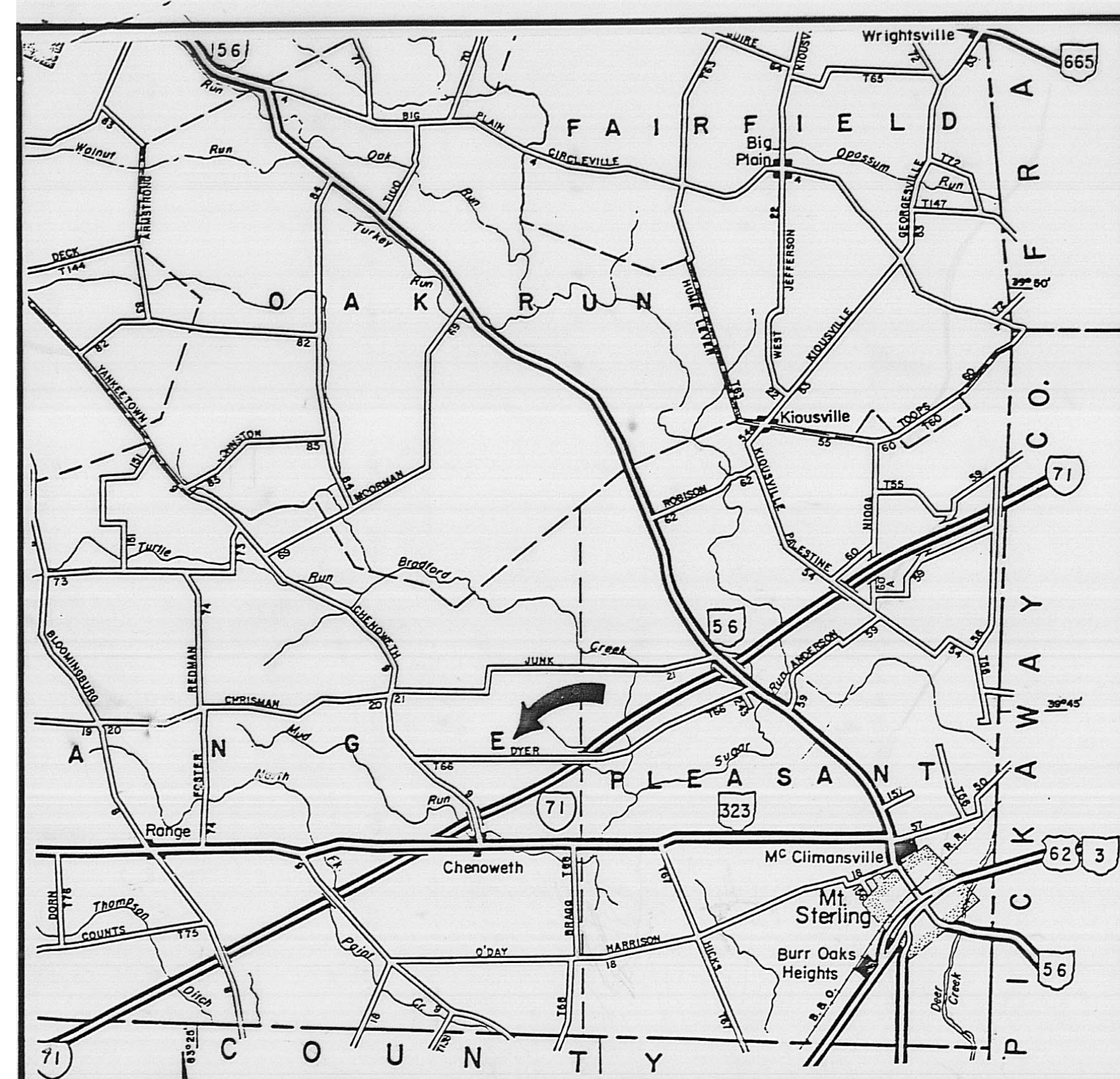
ORIGINAL 56.989 ACRES
 ORIGINAL 61.429 ACRES

UNIT N° 2
 UNIT N° 1

UNIT N° 7
 UNIT N° 6
 UNIT N° 5

NOTE: THESE UNITS N° 1 THROUGH N° 6 & 9 ARE OF SEPARATE TRACTS OF LAND SURVEYED, PLATTED, & RECORDED, BY THE UNITED STATES OF AMERICA THROUGH THE SECRETARY OF AGRICULTURE AND THE FARM SECURITY ADMINISTRATION BRANCH THEREOF. SEE MAP OF OHIO FARMS — MADISON COUNTY, OHIO "RURAL RESETTLEMENT" A SUBDIVISION RECORDED OCTOBER 14TH, 1937 PLAT BOOK 1 AT PAGE 272 & SLIDE N° 258 FOR ORIGINAL FILING INFORMATION SEE BACK OF PAGE N° 270.

UNIT N° 7 ORIGINAL 52.995 ACRES



TOTAL AREA NEWLY SURVEYED TO R IN E OF DYER ROAD 40' WIDE 70,861.9 SQ. FT. OR 1.6268 ACRES OF WHICH 5,172.4 SQ. FT. OR 0.1187 AC. IS IN PRESENT ROAD RIGHT OF WAY PART OF 55.998 ACRES VOL. 258 PG. 159-160

HORIZONTAL GRAPHIC SCALE SCALE: 1" = 40'

AREA IN ROAD RIGHT OF WAY: 5,172.4 SQ. FT. OR 0.1187 ACRES
 TOTAL DISTANCE: 258.620' N88°19'00"W
 HINGE SPIKE SET
 CONC. SPIKE # CAP FD.
 1/2" PIPE ALSO FOUND