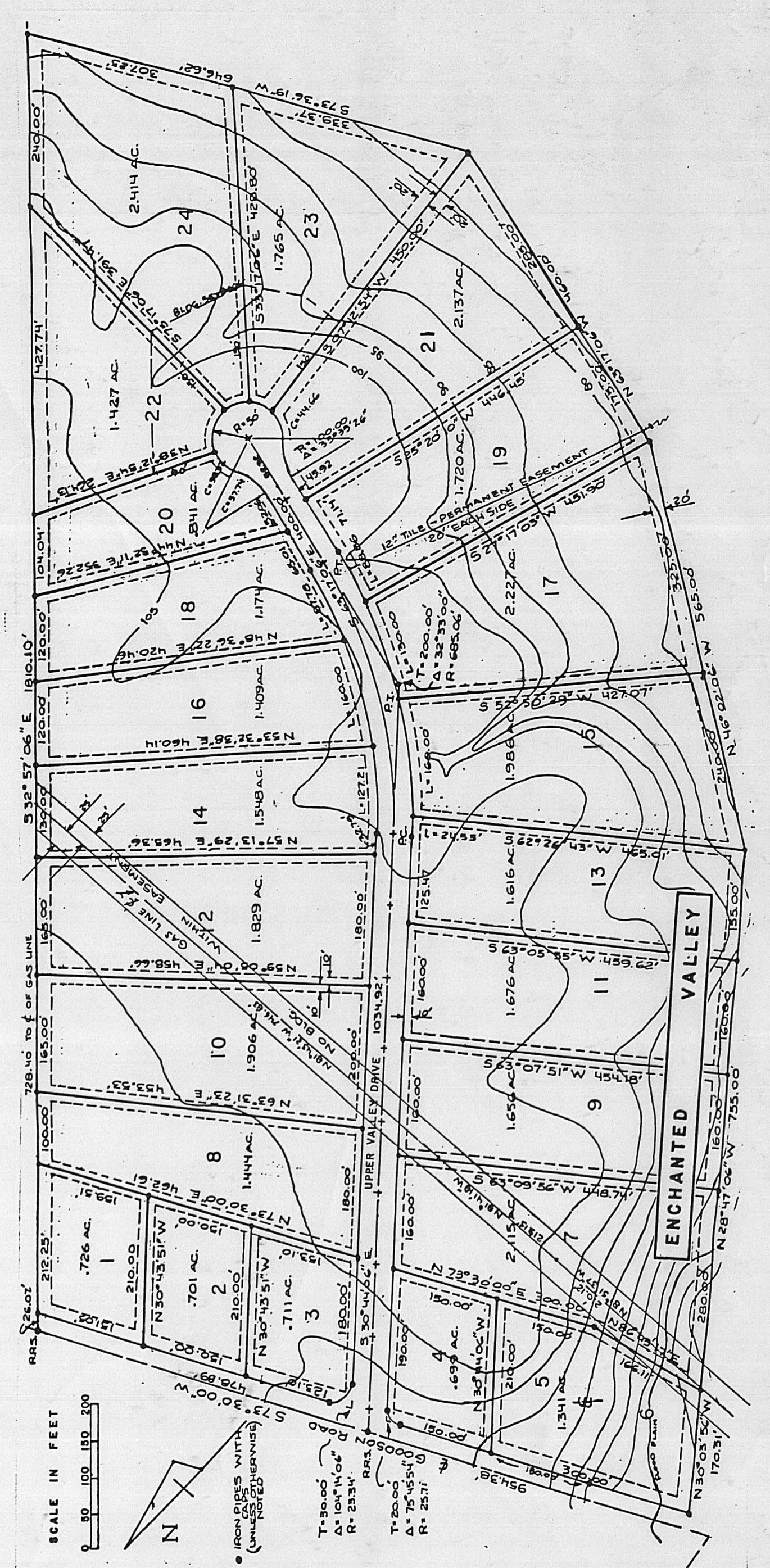


I CERTIFY THAT DURING THE 1<sup>ST</sup> WEEK & 2<sup>ND</sup> WEEK  
OF NOVEMBER 1981 I PERSONALLY MADE A FIELD  
SURVEY OF THE PREMISES SHOWN AS 2.01 ACRES  
AND HAVE EITHER FOUND OR SET STEEL PIPES WITH  
CAPS INSERTED IN THE TOPS AS DELINEATED. ALL PIPES  
SET BY ME ARE A MINIMUM OF 3/4" DIA. BY AT LEAST  
30 INCHES LONG WITH CAPS STAMPED R.I. BAKER  
S-05539.

*Rodger Irwin Baker* NOV. 12, 1981  
RODGER IRWIN BAKER P.S. # S-05539  
9430 WOODA TOPPS ROAD  
1171 STERLING, OHIO 43143

REQUESTED BY: RICHARD DAILEY



**TITLE: PLAT OF 2.01 ACRES SURVEYED  
IN VMS 2985 JEFFERSON TOWNSHIP  
MADISON COUNTY, OHIO NOV. 1981  
PART OF 27.5298 ACRES (TAX RECORDS)  
PROGRESSIVE FARMS, INCORPORATED  
D.B. 244 PG. 353 SCALE: AS SHOWN  
LANDS BETWEEN & OF LITTLE DARBY CREEK  
AND ABUTTING SOUTH BOUNDARY OF  
LOT NO. 19 ENCHANTED VALLEY SUBD.  
FILED FOR RECORD P.B. 2 AT PG. 225  
SURVEYED FOR: RICHARD M. DAILEY & OTHERS**