

William E. & Ann L. Ward
170.642 Ac. DB 270, Pg 770

Gerald D. Stroupe
10.44 Ac. DB 163, Pg. 172
N 67°14'23" W
96.49

Richard L. & Anita K. Green
23.237 Ac. D.B. 263, Pg. 635

Tract VIII
21.9695 Ac.

Tract VII	Tract VI	Tract V	Tract IV	Tract III	Tract II	Tract I
9.2308 Ac.	9.0652 Ac.	11.0981 Ac.	15.4690 Ac.	10.3497 Ac.	10.1463 Ac.	9.9578 Ac.

N 20°4'22" E 907.61

Jerome D. & Carol Ann Daniels
24.1437 Ac. DB 263, Pg. 596

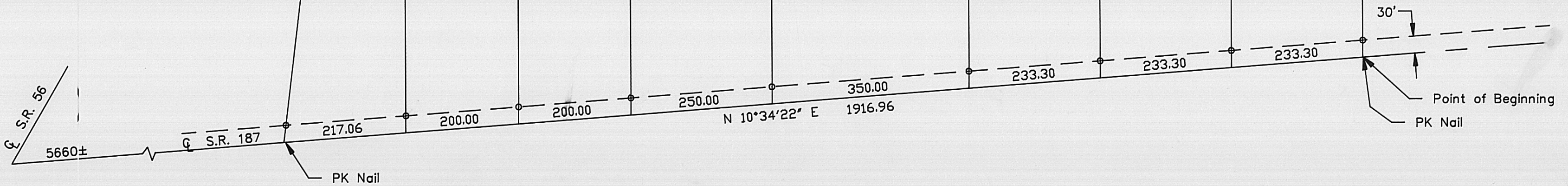
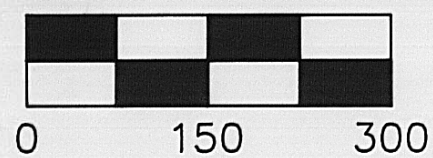
N 75°15'0" W 1745.64
(Ref. Brg.)



Legend:

- Iron Pin Set, Marked RET P.S. #6552
- Iron Pin Found

Scale:



THOMPSON SURVEYING
2005 Deer Run Lane
London, Ohio 43140
(614) 852-4345

Grantor — Roy B., Jr. & Julie M. Wells, D.B. 261, Pg. 268
Location — VMS 6014, Somerford Twp., Madison County
Acreage — 97.2864 Acres (was 97.8 Acres)

I hereby certify that here on
platted property was surveyed
to acceptable standards.
Roger E. Thompson 8-5-87
Roger E. Thompson P.S. #6552