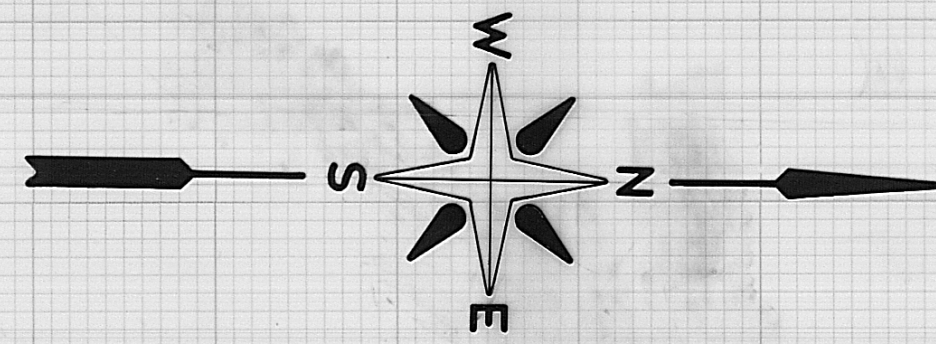
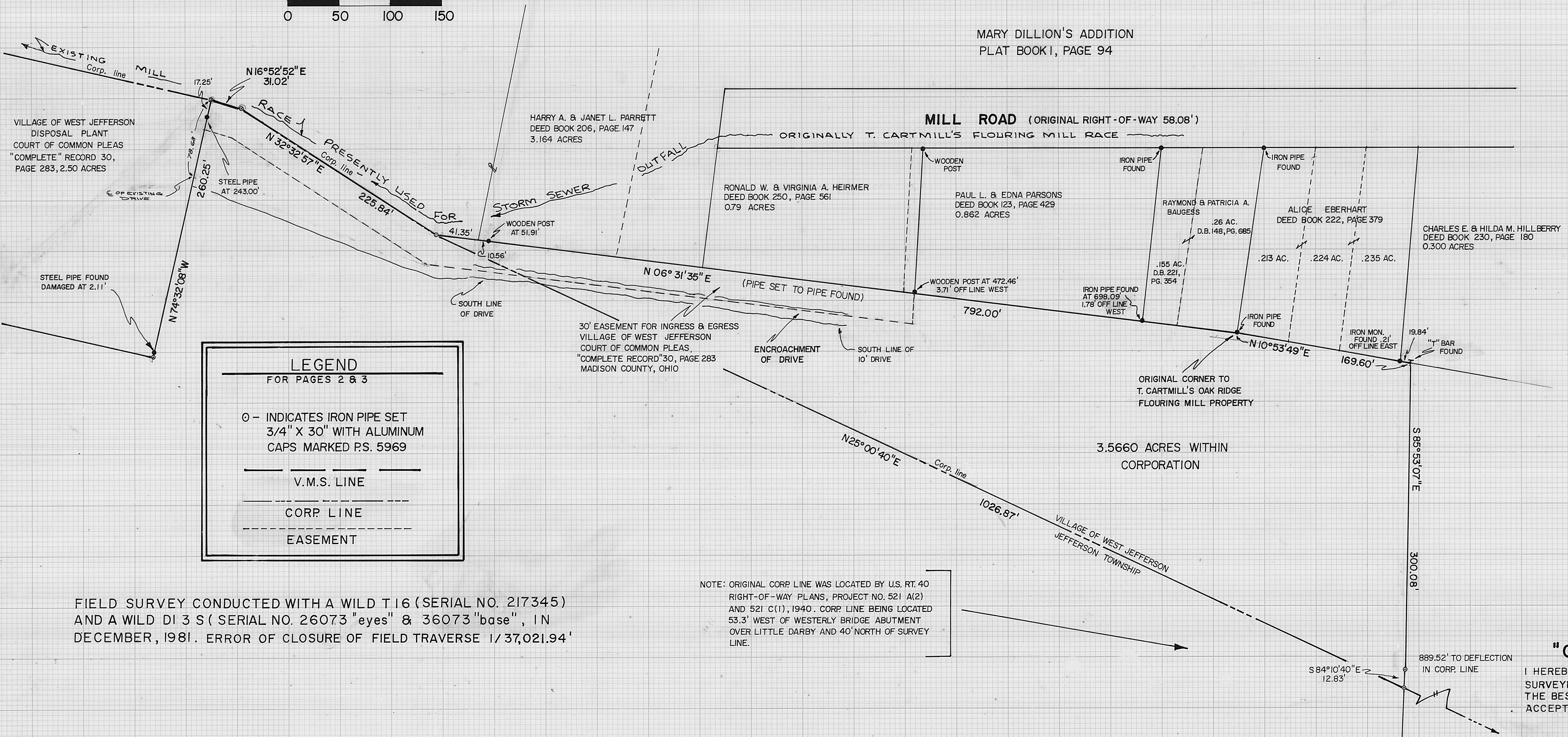


DETAIL AS SHOWN (SEE PAGE 2)
LAND SURVEY FOR H.E. SCHMIDT III
MADISON COUNTY, OHIO



Scale in Feet
0 50 100 150

MARY DILLION'S ADDITION
PLAT BOOK I, PAGE 94



LEGEND
FOR PAGES 2 & 3

- - INDICATES IRON PIPE SET 3/4" X 30" WITH ALUMINUM CAPS MARKED PS. 5969
- V.M.S. LINE
- - - CORP. LINE
- - - EASEMENT

FIELD SURVEY CONDUCTED WITH A WILD T 16 (SERIAL NO. 217345) AND A WILD DI 3 S (SERIAL NO. 26073 "eyes" & 36073 "base", IN DECEMBER, 1981. ERROR OF CLOSURE OF FIELD TRAVERSE 1/37,021.94'

NOTE: ORIGINAL CORP. LINE WAS LOCATED BY U.S. RT. 40 RIGHT-OF-WAY PLANS, PROJECT NO. 521 A(2) AND 521 C(1), 1940. CORP. LINE BEING LOCATED 53.3' WEST OF WESTERLY BRIDGE ABUTMENT OVER LITTLE DARBY AND 40' NORTH OF SURVEY LINE.

"CERTIFICATION"
I HEREBY CERTIFY TO H.E. SCHMIDT III THAT I SURVEYED THE HEREON PLATTED PROPERTY, TO THE BEST OF MY KNOWLEDGE AND BELIEF, TO ACCEPTABLE SURVEYING STANDARDS.

Neil C. Babb 21 Dec 1981
Neil C. Babb PS. 5969
RE-CERTIFIED AS TO 1981 SURVEY
8/19/86

BABB ENGINEERING & SURVEYING
11 EAST 1st STREET
LONDON, OHIO 43140

DRAWN BY <i>JS</i>	SV - 11581
CHECKED BY <i>NS</i>	JOB NO.
	7-81