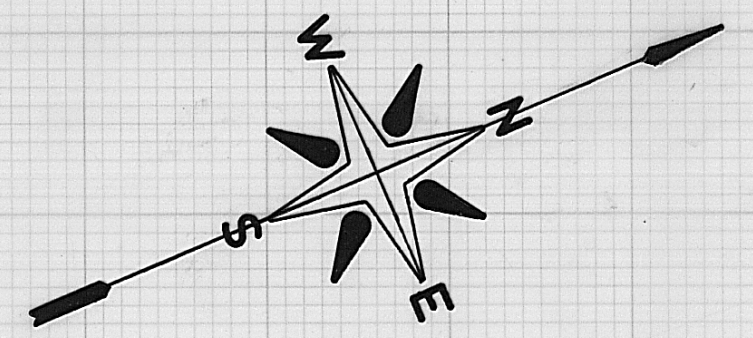


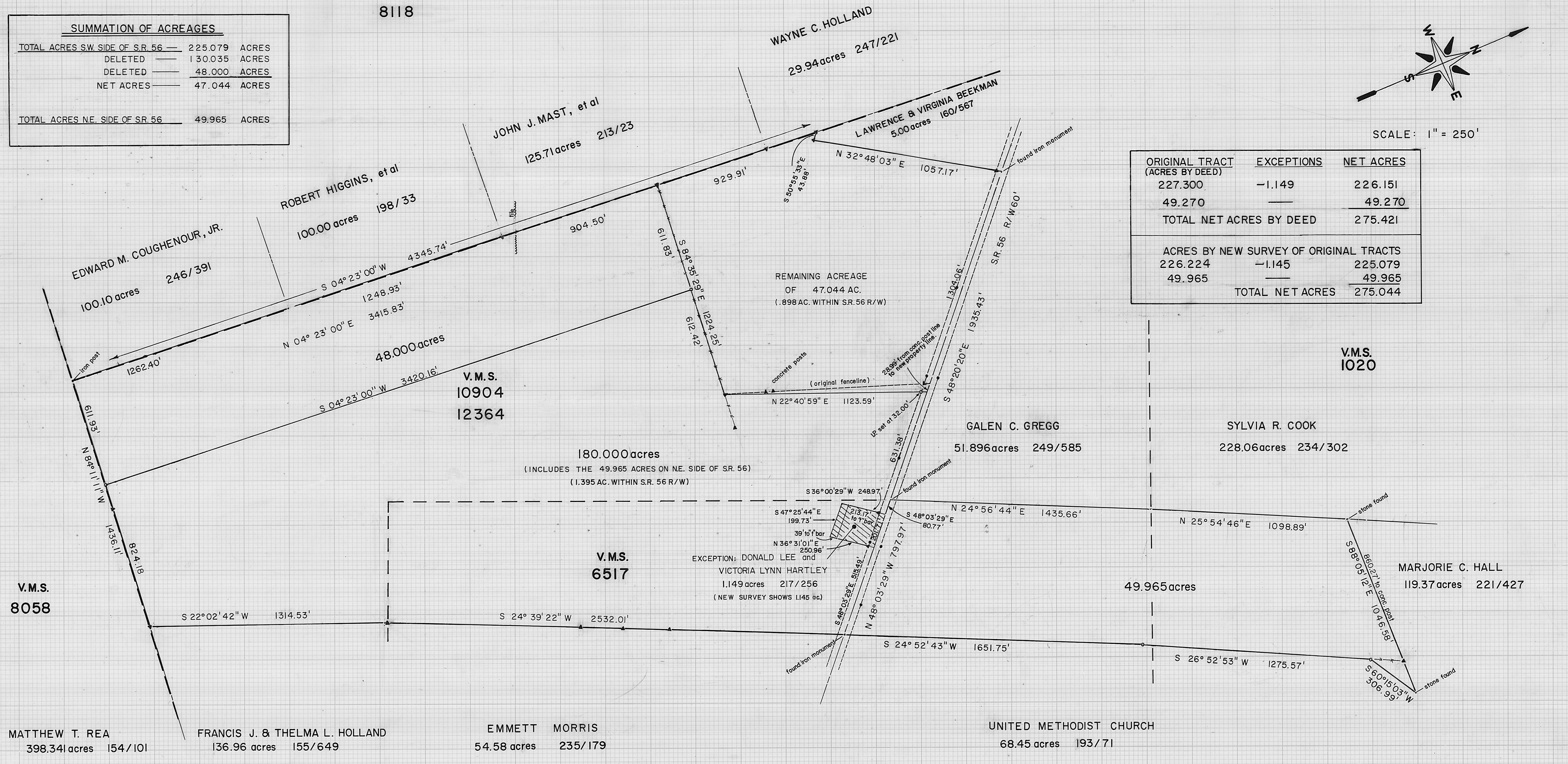
V.M.S.
8118

SUMMATION OF ACREAGES		
TOTAL ACRES SW SIDE OF S.R. 56	225.079	ACRES
DELETED	130.035	ACRES
DELETED	48.000	ACRES
NET ACRES	47.044	ACRES
TOTAL ACRES N.E. SIDE OF S.R. 56	49.965	ACRES



SCALE: 1" = 250'

ORIGINAL TRACT (ACRES BY DEED)	EXCEPTIONS	NET ACRES
227.300	-1.149	226.151
49.270	—	49.270
TOTAL NET ACRES BY DEED		275.421
ACRES BY NEW SURVEY OF ORIGINAL TRACTS		
226.224	-1.145	225.079
49.965	—	49.965
TOTAL NET ACRES		275.044



BABB ENGINEERING & SURVEYING
5 EAST FIRST ST., P.O. BOX 374
LONDON, OHIO 43140

Survey for: Anna P. Patton, 7490 State Route 56 S.E.
Oak Run Township, Madison County, Ohio

LEGEND	
▲	INDICATES CONCRETE POST
○	INDICATES IRON PIPE SET 3/4" x 30" WITH ALUMINUM CAP MARKED PS. 5969.
—	INDICATES V.M.S. LINE
●	INDICATES CONCRETE HIGHWAY MONUMENT

7, APRIL 1980	DATE
SV- 1880	JOB NO.
6-80	NEIL BABB PS. 5969