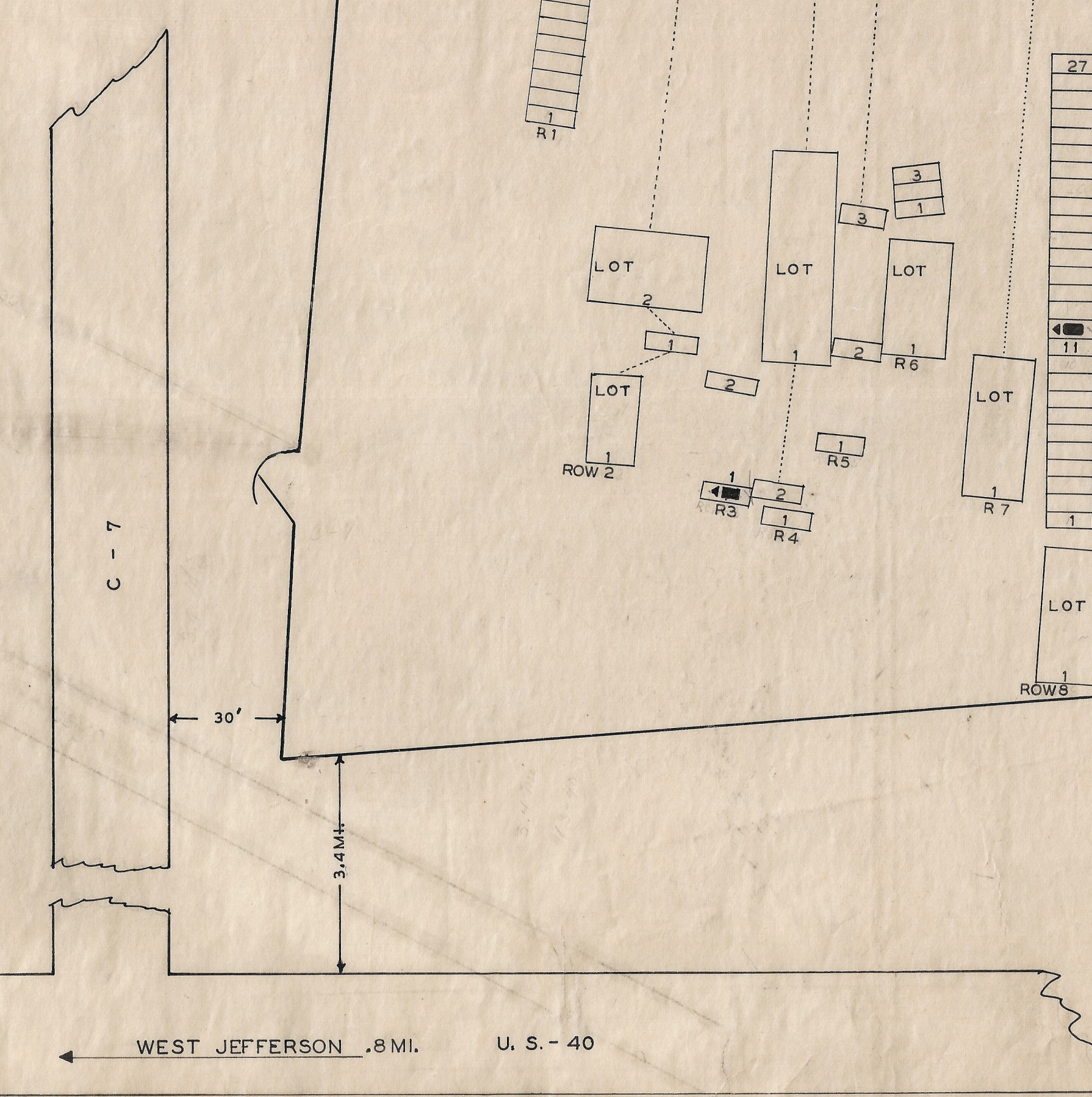
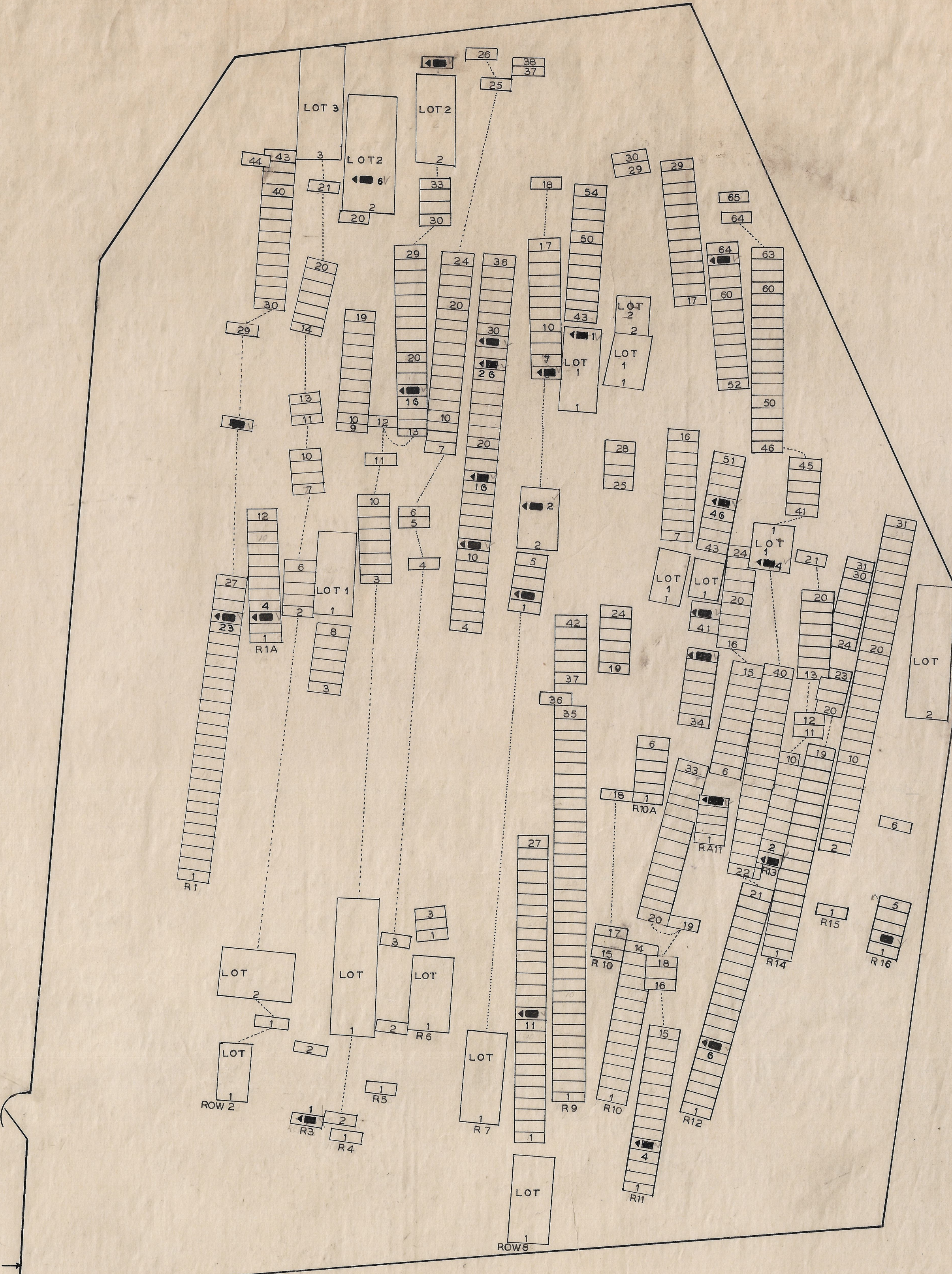


NAME	SEC	L	R	G	W
ALDER JONATHAN	13	1		10	
BIDWELL JOSEPH	11	5		19	
BIDWELL LAFAYETTE	12	7		19	
BROWN THOMAS D.	7	6		19	
BURLYLE JERRY	3	1			
EDWARDS JACOB I.		4	17	19	
EDWARDS JOHN	1	12	4	19	
HARBAGE JOS.	2	7	3	19	
HERRIOTT WM.	2	1	24	19	
HIGH MARTIN V.	2	3	6	19	
KELLY FRANCIS A.	1	9	1	19	
KNOX RALPH		11	47	10	
LOWE JOHN B.		1A	3	19	
LUCAS DAVID R.		6	17	19	
LUCAS JAMES A.		6	29	19	
LUCAS JOHN		6	27	10	
MOORE STEPHEN H.	16	2		19	
MORGAN LEONARD	11	42		19	
NEWHOUSE JOHN	4	34		19	
O'HARRA JAMES	8	12		19	
PLANK A. J.	6	11		19	
POWERS WALTER	11	40		1	
REASON A. J.	11	63		19	
JEFFERIES WILBURT				1	28 31
BIDWELL RUSSEL				11A	5



LEGEND  
 SEC-SECTION L-LOT R-ROW  
 G-GRAVE W-WAR  
 \*-POSITION UNKNOWN

**ALDER  
 OR  
 FOSTER CHAPEL  
 CEMETERY**

MADISON CO. JEFFERSON TWP.  
 OFFICIAL PROJECT NOS. 465-42-3-467 & 665-42-3-232

LEGEND

- ① REVOLUTIONARY WAR
- ⑩ WAR OF 1812
- ⑬ MEXICAN WAR
- ⑰ CIVIL WAR
- ⑳ SPANISH AM. WAR
- ⑳ WORLD WAR

SCALE 1" = 20'      ACRES 1.50