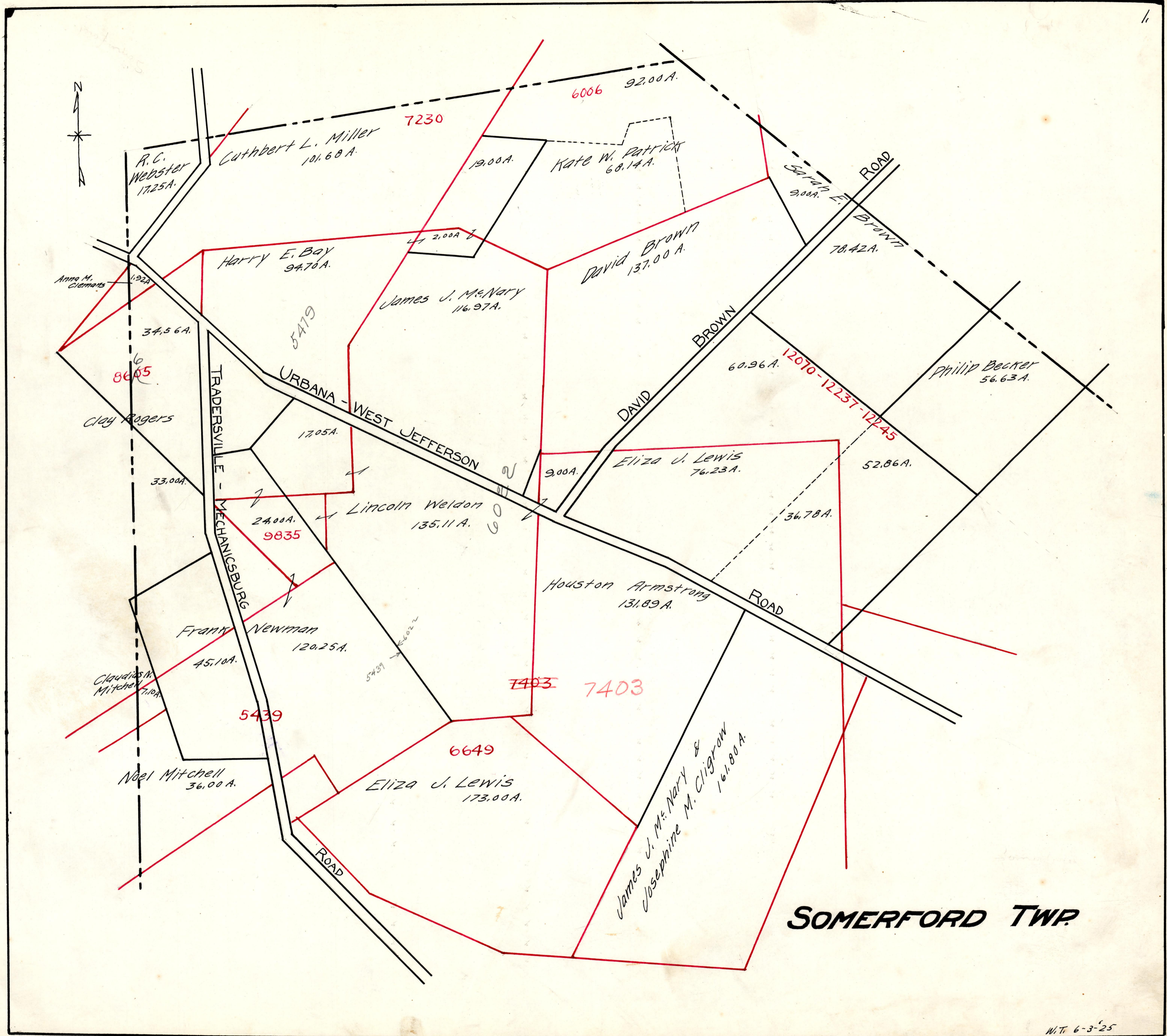


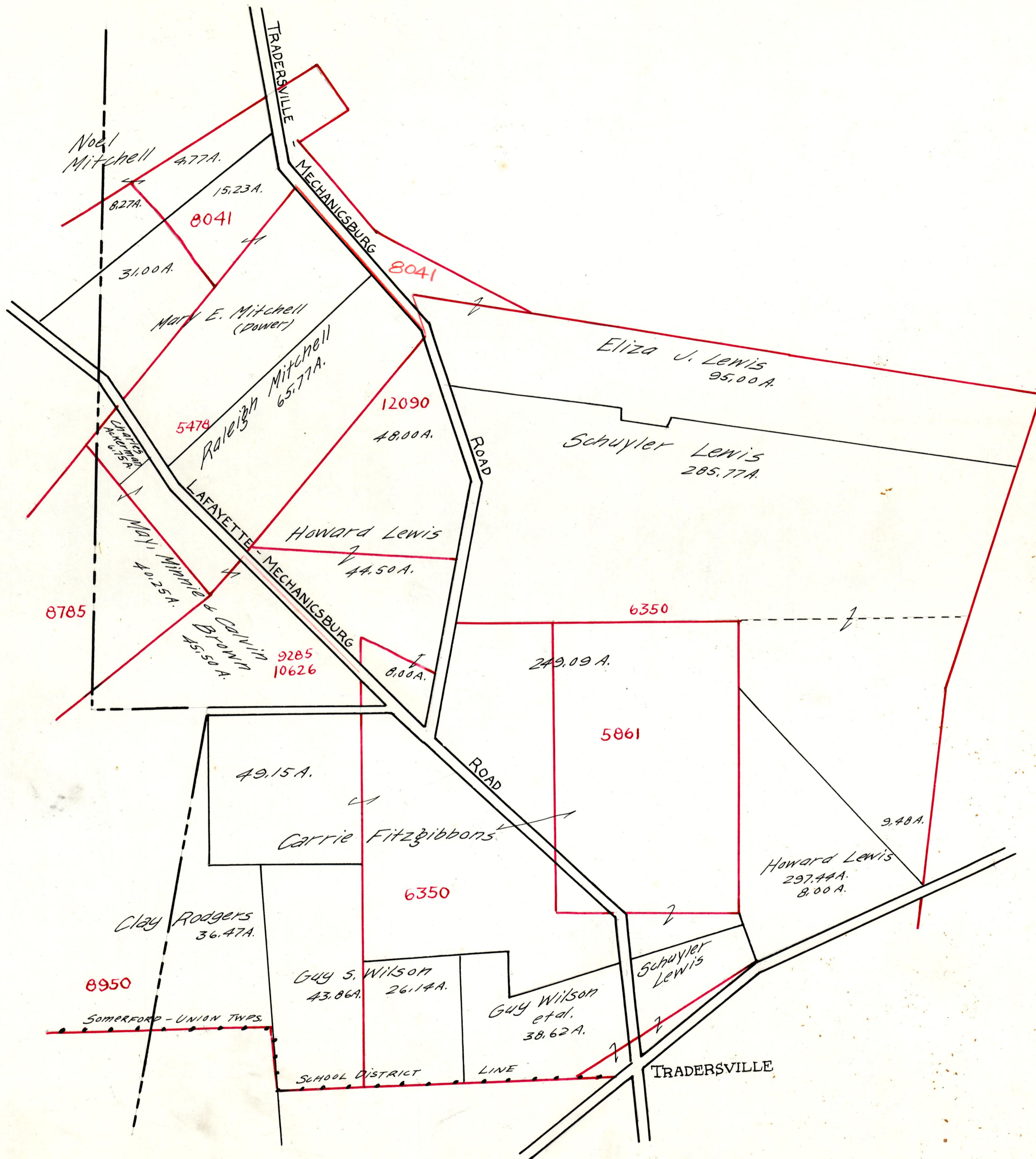
# SOMERFORD TP. INDEX

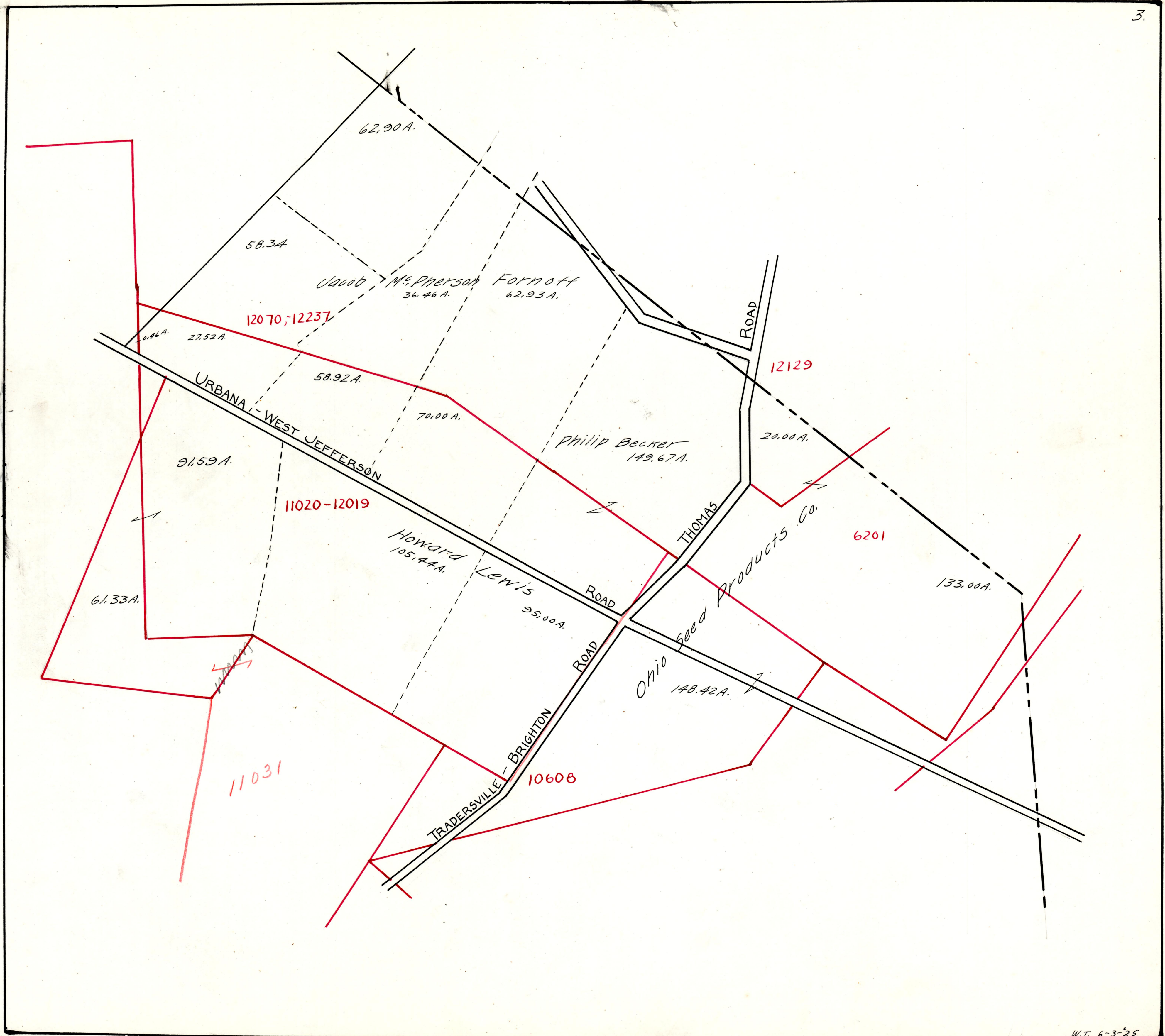
SURVEY	PAGE
3725	9&13
3726	13
3900	10
4125	8,9,&10
4126	9
4200	13&14
4214	14
4425	13&14
4427	14
4481	9&11
5198	6,10&15
5439	1
5478	2
5479	1
5539	6
5791	10&12
5792	7
5861	2
5999	14
6006	1
6014	5,8,&9
6018	8&13
6022	1
6200	8&9
6201	3
6243	12
6244	10
6245	12
6246	12
6288	11&13
6317	7
6348	5
6649	1
6780	12
6350	2&6
7079	11&14
7230	1

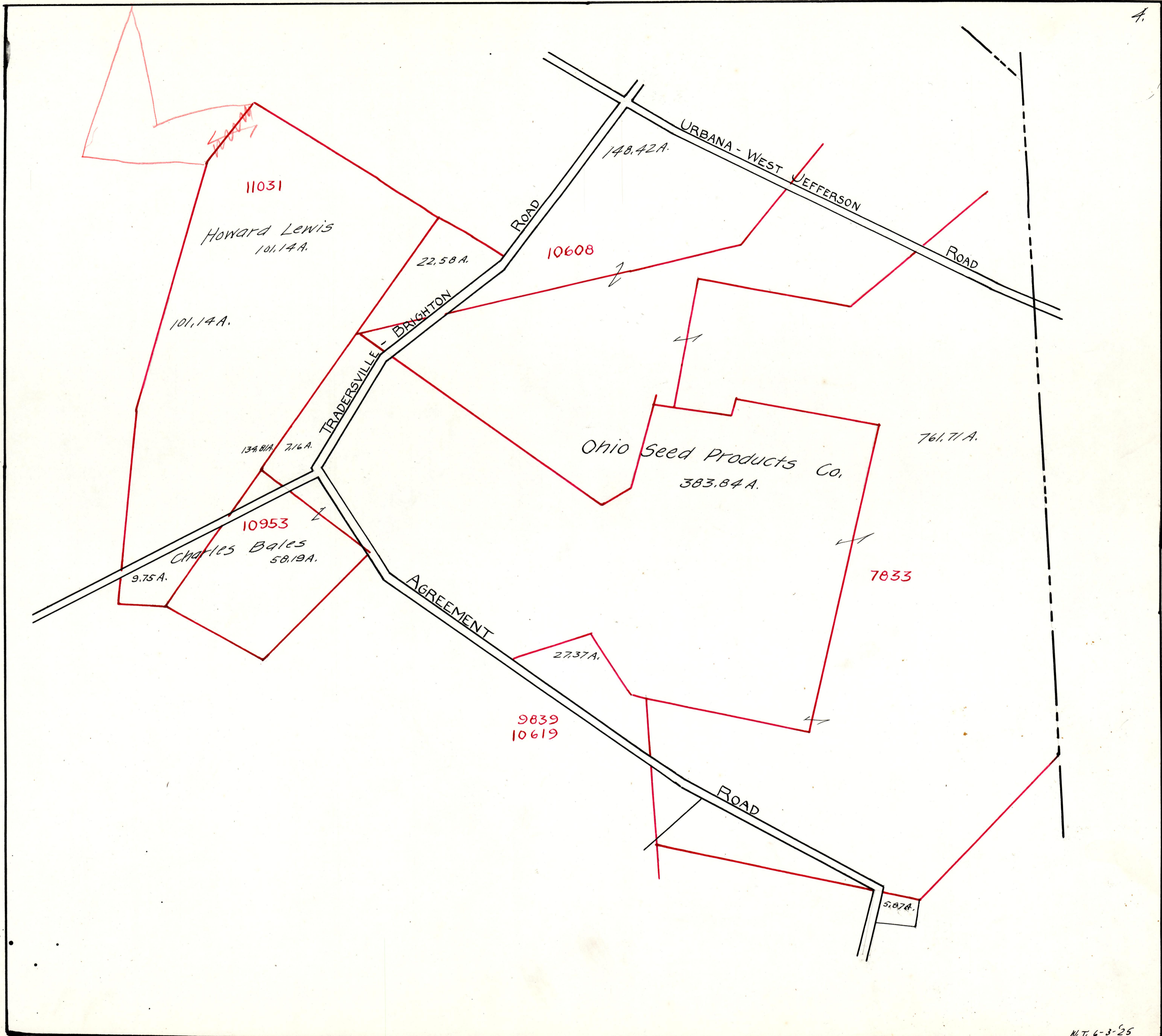
SURVEY	PAGE
7403	1
7404	4
7828	7
7833	4,6,&7
8041	2
8352	9&11
8503	12
8685	1
8785	2
8864	12
8950	2
9285	2
9337	11
9835	1
9839	4&6
10507	5
10608	3&4
10619	4&6
10626	2
10953	4&6
11020	3
11031	4&6
12019	3
12031	13
12070	1&3
12090	2
12129	3
12144	6&7
12145	6&7
12146	7
12172	4
12177	4
12236	4
12237	1&3
12245	1&3
12916	5,6,&8
13698	5&8
13884	12

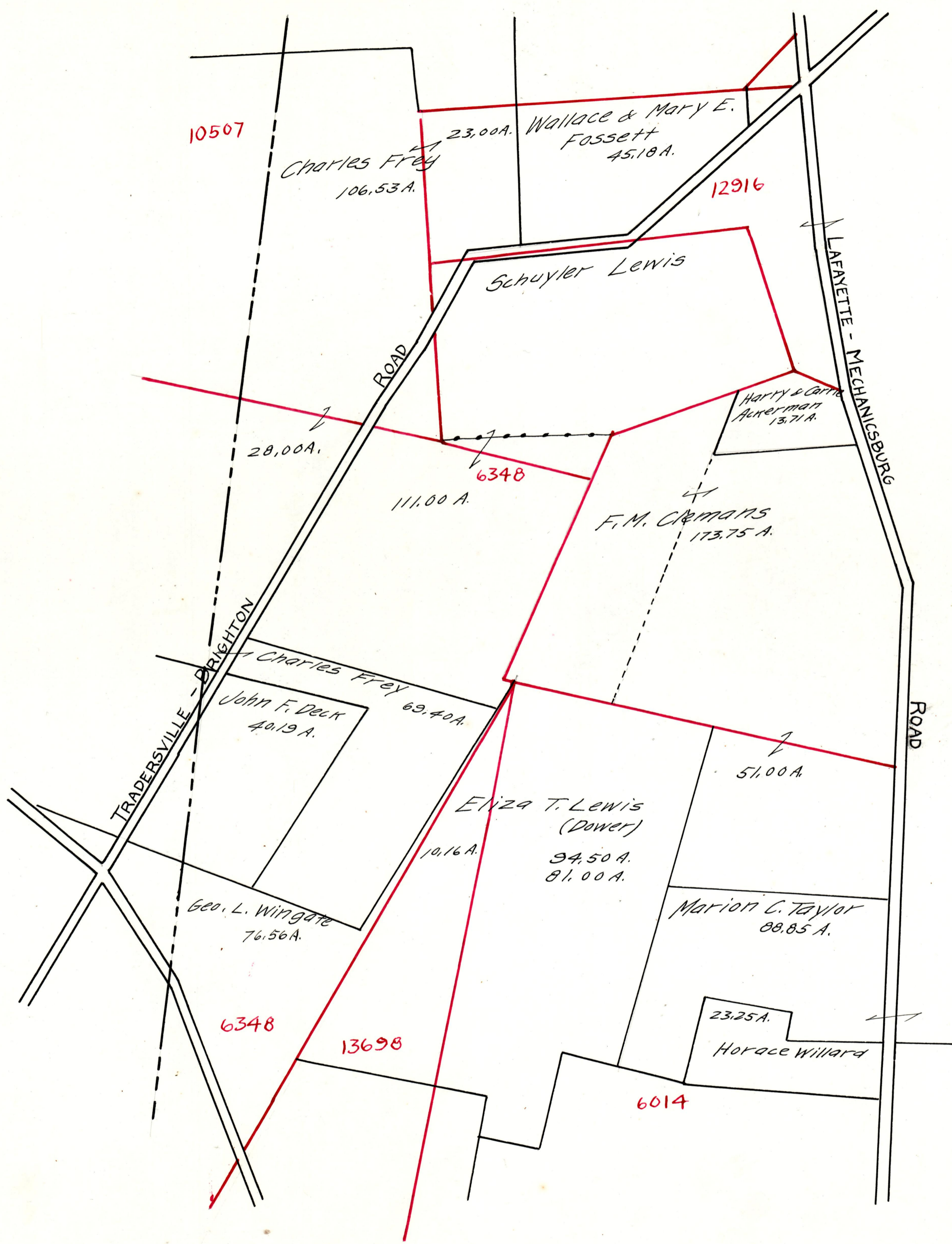


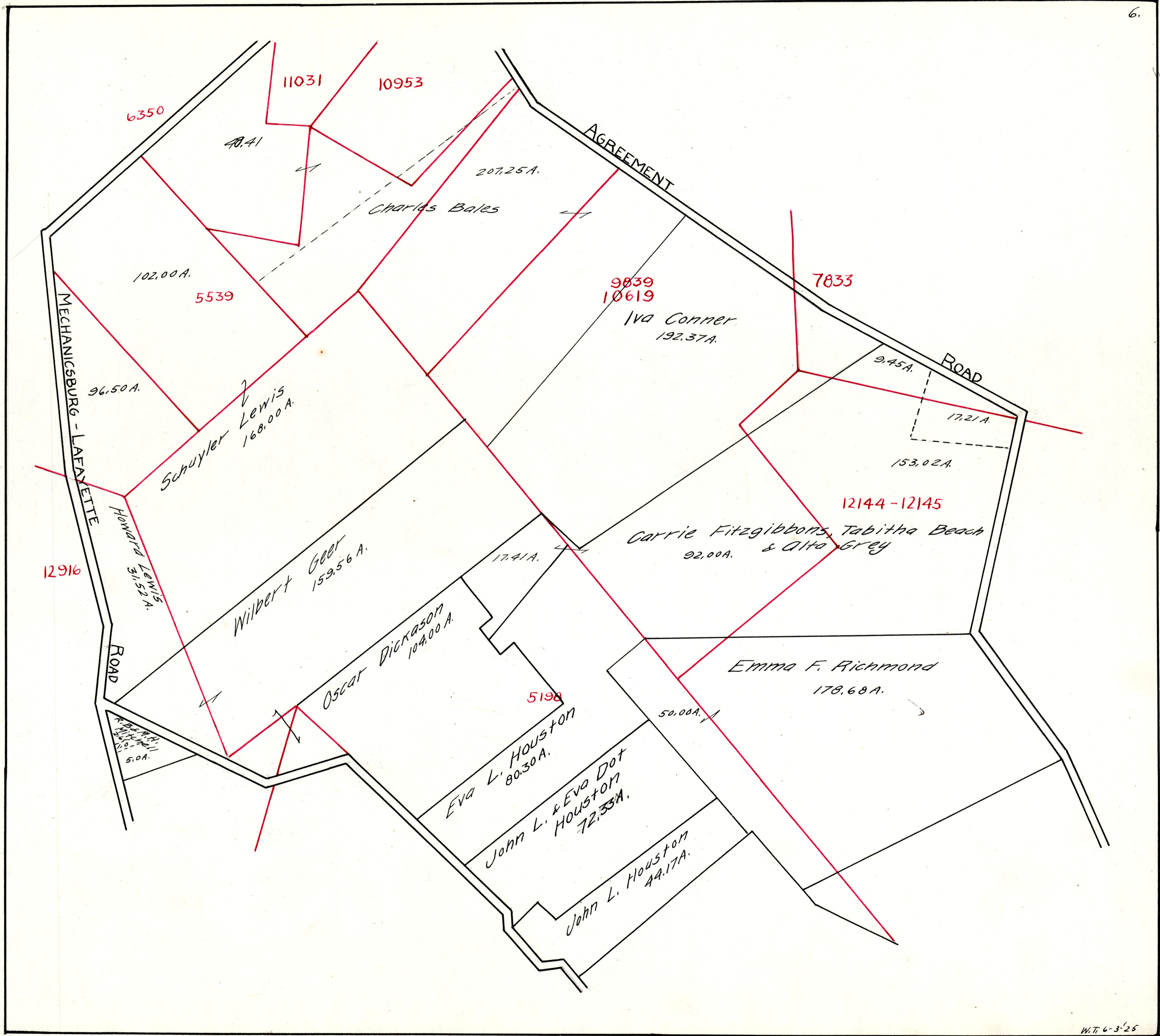
**SOMERFORD TWP.**

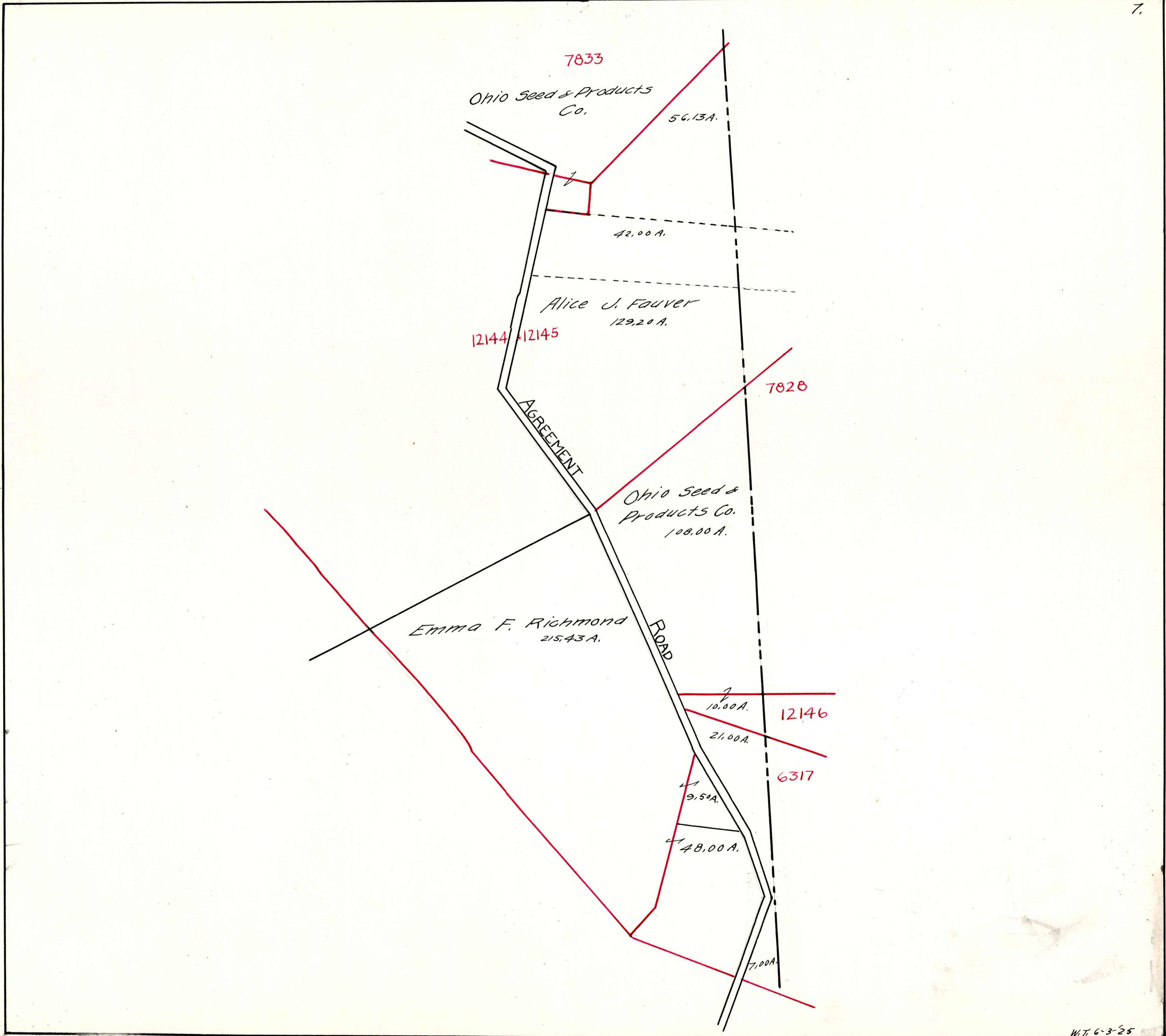








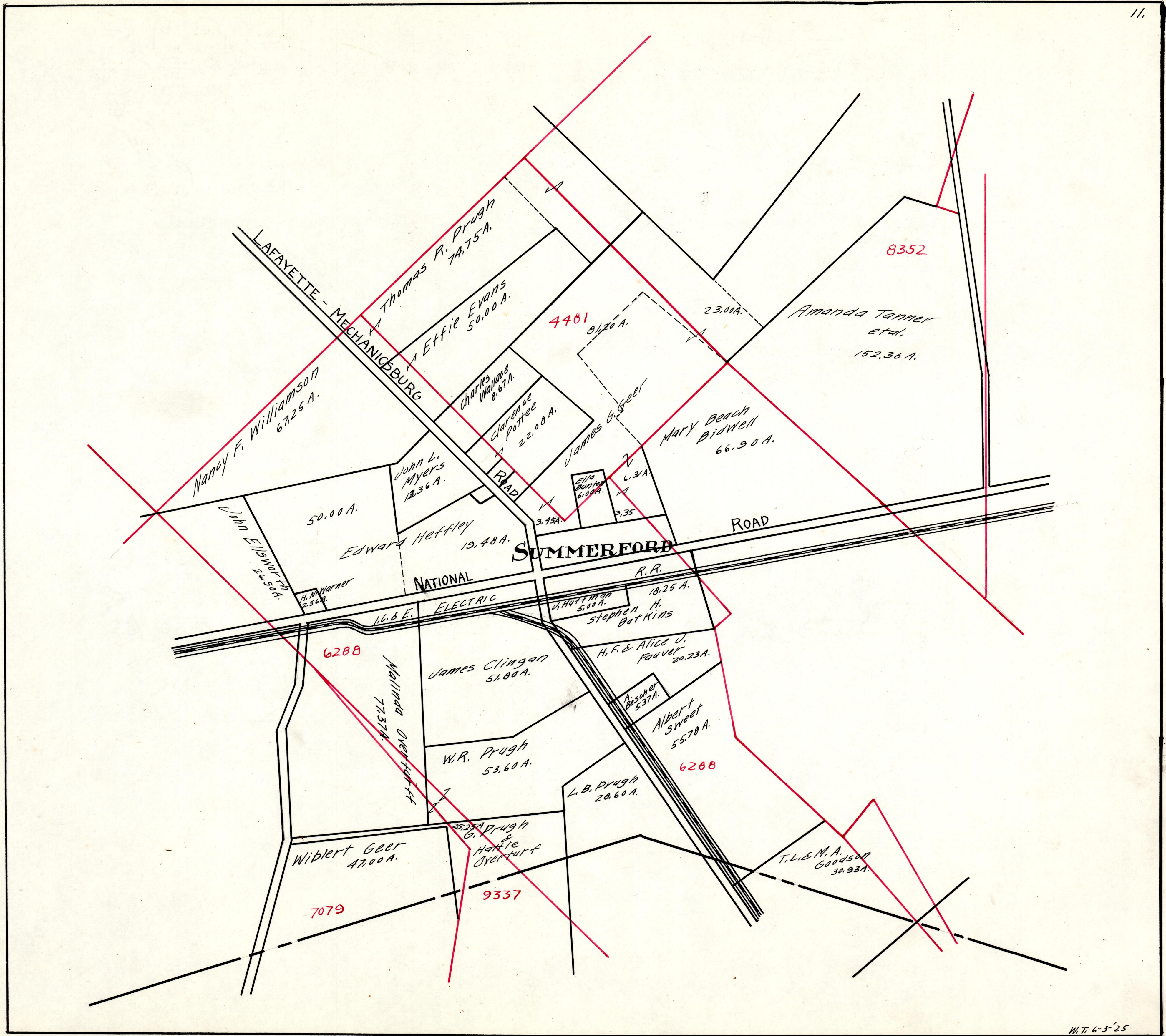


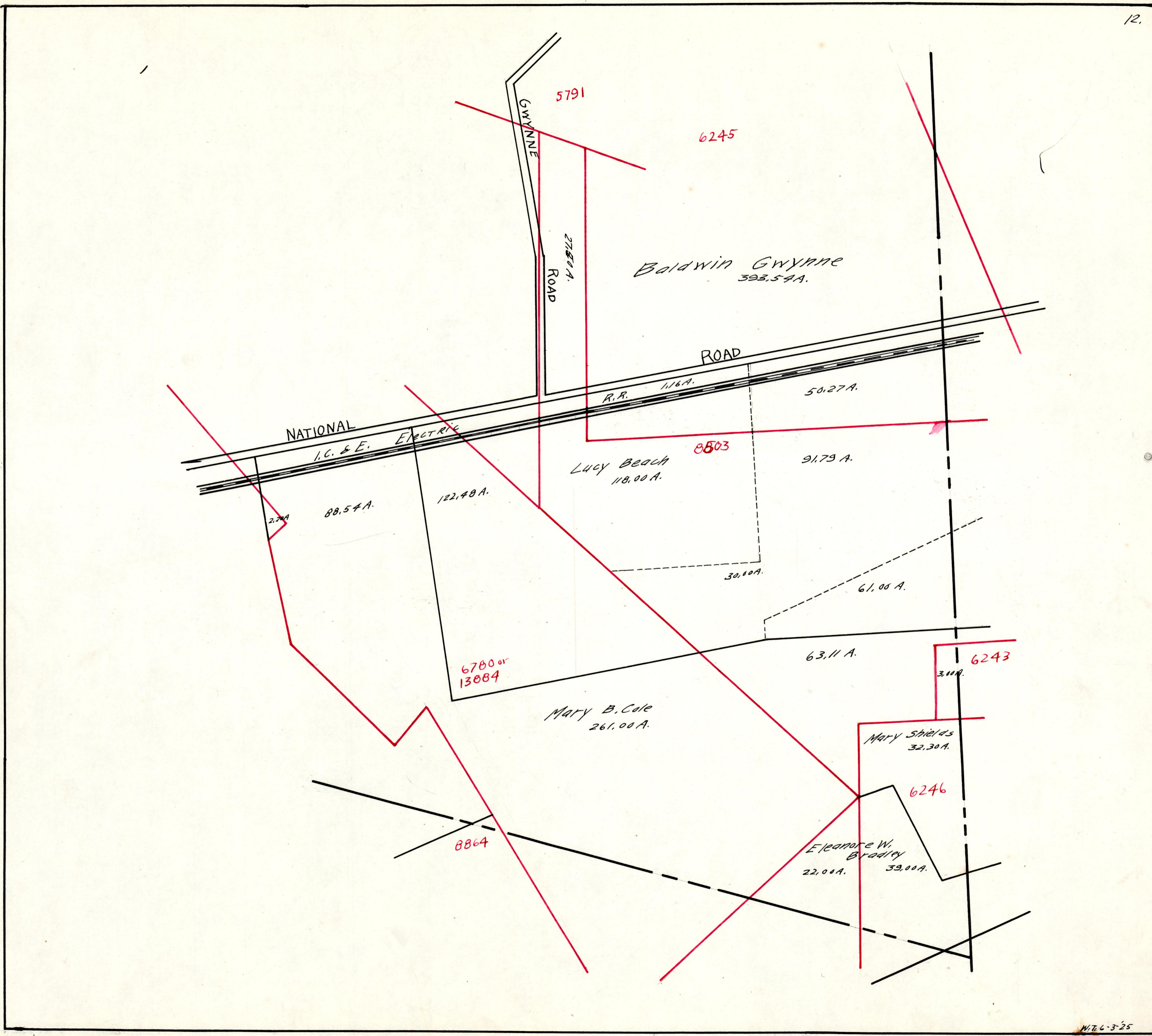




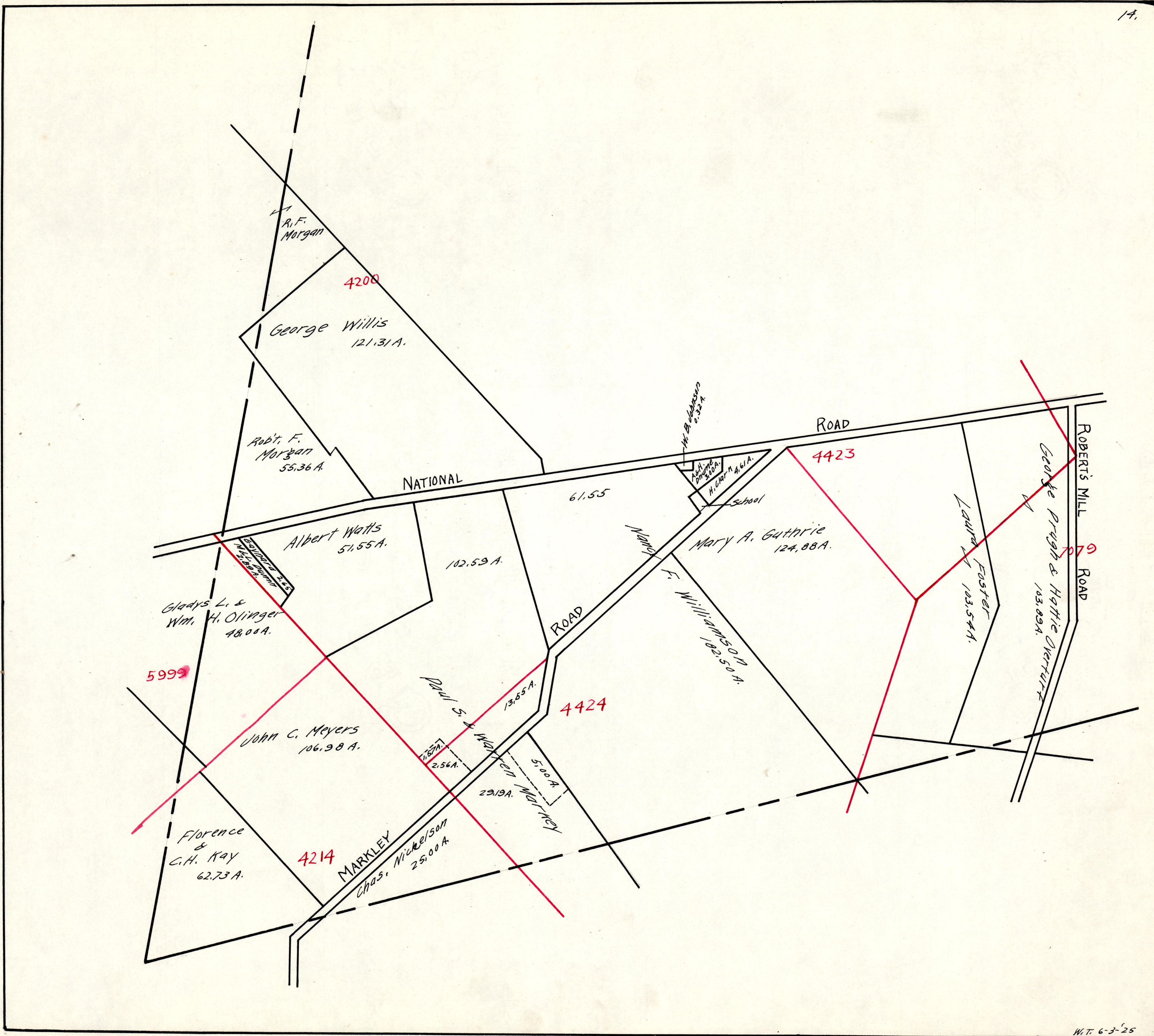












R.F. Morgan

George Willis  
121.31 A.

4200

Robt. F. Morgan  
55.36 A.

NATIONAL ROAD

61.55

W.B. Johnson  
0.32 A.

A.H. Johnson  
0.30 A.

H. Clark  
0.61 A.

School

ROAD

4423

Albert Watts  
51.55 A.

102.59 A.

Mary A. Guthrie  
124.88 A.

ROAD

ROAD

13.55 A.

4424

5.00 A.

29.13 A.

ROAD

5.00 A.

MARKLEY ROAD

2.56 A.

1.87 A.

ROAD

ROBERTS MILL ROAD

Laura Foster  
103.54 A.

George Prugh & Hattie Overturn  
103.09 A.

5999

Gladys L. & Wm. H. Olinger  
48.00 A.

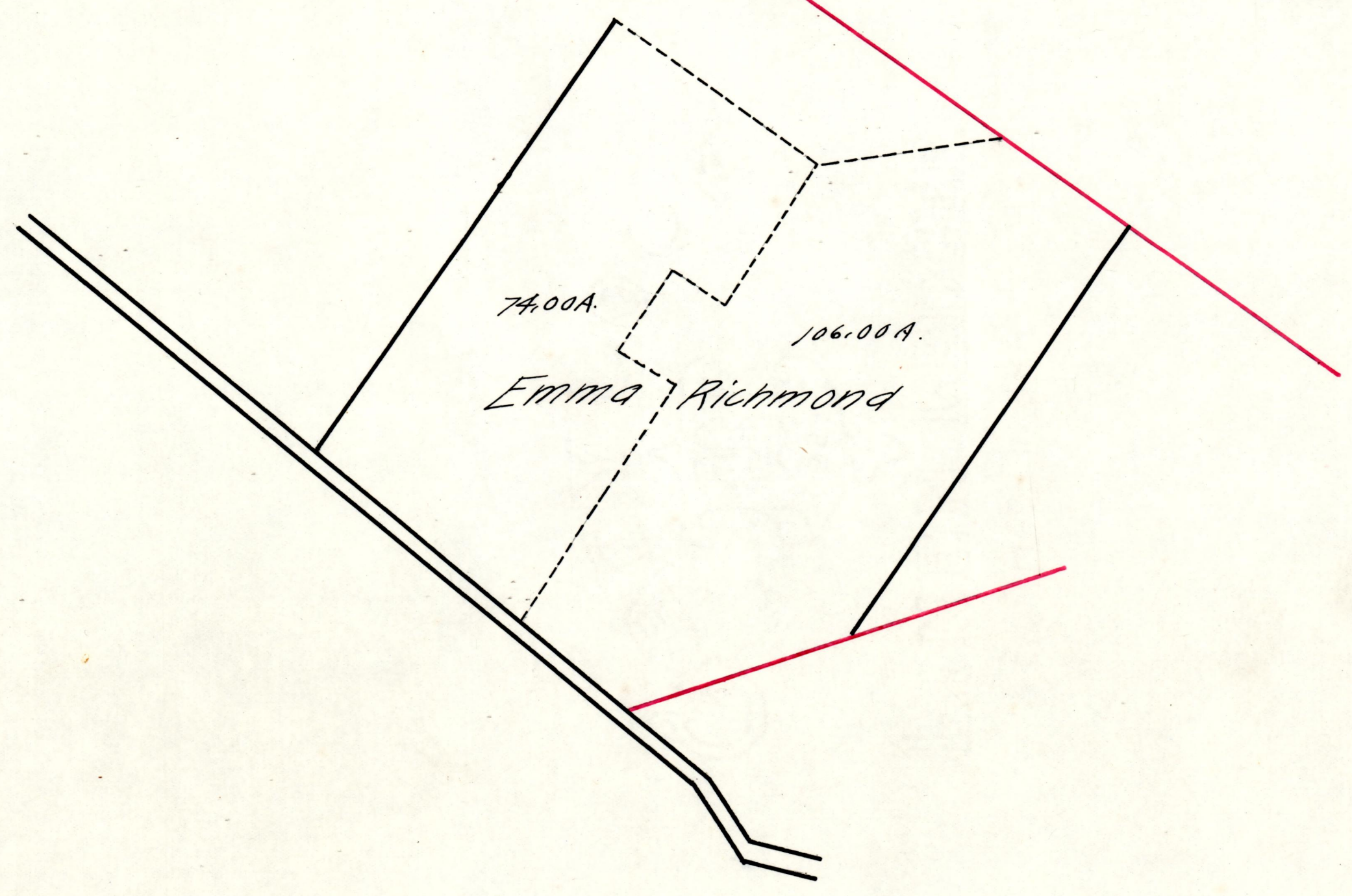
John C. Meyers  
106.98 A.

4214

Florence & C.H. Kay  
62.73 A.

Chas. Nickelson  
25.00 A.

5190



74.00A

106.00A

Emma Richmond