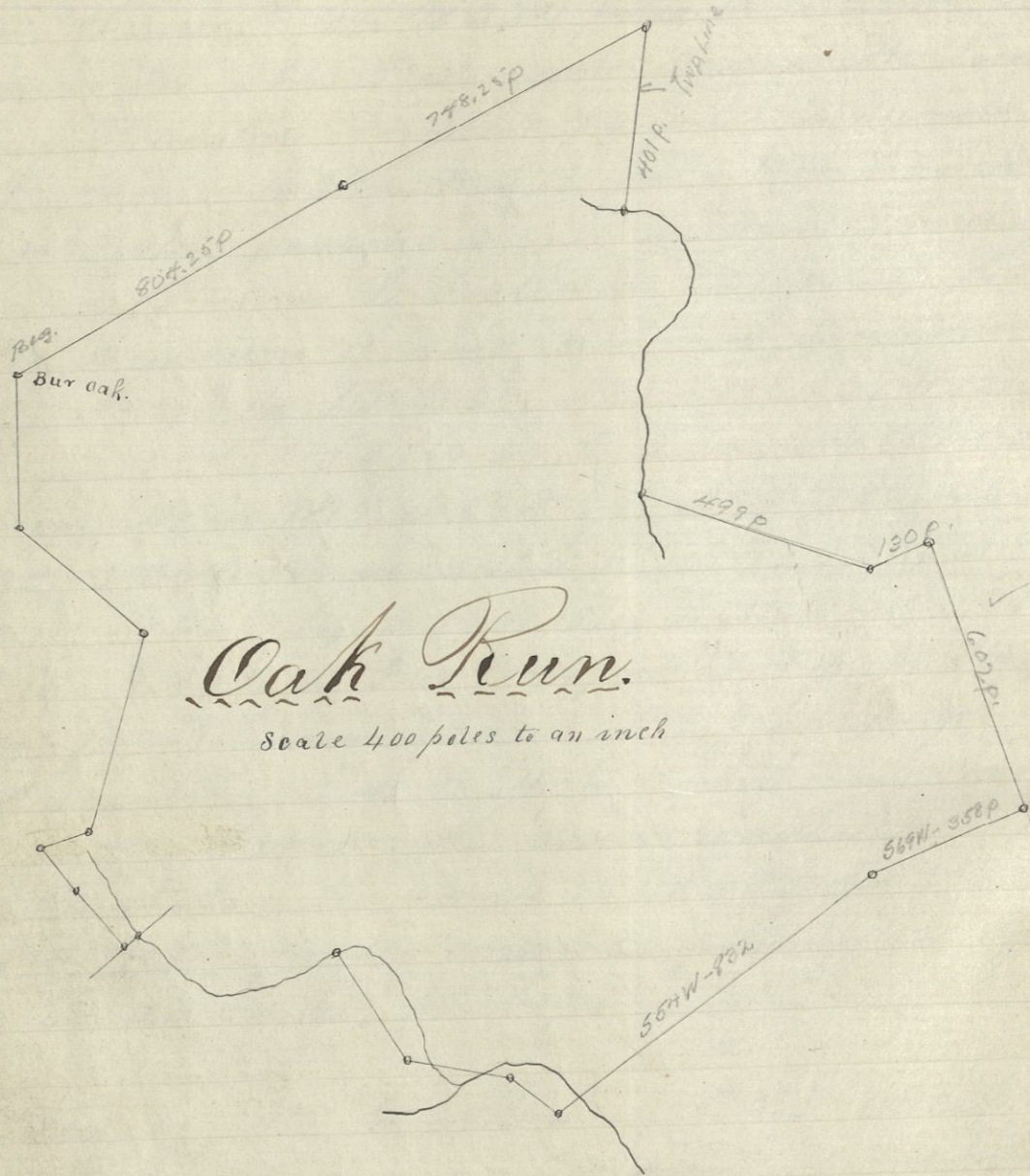


Oak Run Township

Beginning at a double bur oak corner to Jesse Ray and Maxwell Munoy & John Buckle's lands; thence N 61 1/2 E 80 1/4 poles, crossing oak run at about 400 poles, and the Chillicothe road at 472 1/4 poles to a hickory corner to James McStutts survey N 38 4/4, Mrs Evans survey N 41 21, and Ann Sonnetts survey N 79 76, it being also a corner to Robert Amos, Jacob Christman and B. J. & B. F. Custer in the Lafayette road; thence with the John Jones road and a line of said Amos & Custers N 64 E 74 8 1/4 poles, crossing Deer creek at 54 poles, passing a corner to said Evans and corner to David Bradfords survey N 39 73 at 240 poles, and corner to said McStutts at 543 poles, crossing Glade run at 651 poles to 2 white oaks, a corner to said Bradfords in the Fairfield Township line; thence with said Township line S 9 W 401 poles, crossing a branch at 50 poles near a Saw Mill to a dead Hickory, (original call is 5 Hickories) the lower corner to said Evans, and corner to said Township of Fairfield; thence with another line of said Township of Fairfield S 20 W 96 1/4 poles to Deer creek; thence down the creek with the meanders thereof S 82 1/2 E 30 poles; N 40 W 13 poles; N 46 E 10 poles; S 80 E 12 poles; S 65 E 42 poles; S 8 1/4 E 14 poles; S 31 E 20 1/4 poles; S 14 W 7 poles; S 30 E 15 poles; S 46 E 8 poles; S 85 E 8 poles; S 30 E 17 poles; S 46 16 poles; S 55 1/2 E 6 poles; N 52 E 16 poles; N 80 E 13 poles; S 49 E 6 1/2 poles; S 10 E 12 poles; S 39 W 12 poles; South 19 poles; S 16 W 18 1/2 poles; S 6 W 24 1/4 poles; S 30 W 40 poles;



Oak Run

Scale 400 poles to an inch

S 42 N 10 poles; S 63 N 23 poles; N 65 W $8\frac{1}{4}$ poles;
 S $7\frac{1}{2}$ N 12 poles; N 56 W 10 poles; N 30 E 10 poles;
 N 70 W 7 poles; S 35 N 54 poles; passing under the
 bridge at 40 poles; S 24 N 11 poles; S $5\frac{1}{2}$ E $10\frac{1}{4}$ poles
 N 89 E $14\frac{1}{4}$ poles; S 1 E 18 poles; S $23\frac{1}{2}$ N 16 poles;
 S 4 N 14 poles; S 21 E 22 poles; S $21\frac{1}{2}$ N 32 poles; S 3 E
 26 poles; S 14 E 11 poles; S 35 E 25 poles; S 39 N $35\frac{1}{4}$ poles
 S 43 E 7 poles; S 11 E 6 poles; S 34 N 10 poles; S 14 E 15 poles;
 to the line of James Jarris' Survey No 2696; thence
 with his said line S 70 E 499 poles, passing a cor-
 ner of said Jarris' Survey No 1727 at 74 poles to the
 corner of said survey No 1727, and corner to Baron
 Stubens survey No 2698 now owned by John Durr;
 thence N 69 E 130 poles to another corner to said
 survey No 2698. thence S 18 E 602 poles to 3 Elms another
 corner to said survey No 2698. thence S 69 N 358 poles
 crossing Deer creek at 169 poles to a Hickory another
 corner to said survey No 2698. thence S 54 N 832 poles
 to a stake in the line between J & D. McClimens and the
 Swynne land; thence with said line N 50 W 134
 poles to a stone corner to said J & D. McClimens and
 the Swynne land; thence N $80\frac{1}{2}$ W 224 poles crossing
 Bradford at 74, a branch of Bradford at 158 poles to a
 double black oak corner to John Foster and J & D Mc-
 Climens; thence N $29\frac{1}{2}$ W 273 poles passing corner
 between Thomas Foster & John Foster at 175 poles
 a corner to Thomas Foster & James McClimens at 247
 to a branch of Bradfords Fork; thence with the main
 deo thereof S 45 N 8 poles; S 59 N 16 poles; S 38 N 29 poles

N 83 W 13 poles; S 27 N $12\frac{2}{3}$ poles; S 43 N $10\frac{1}{2}$ poles
 N 55 W 14 poles; S 86 W 26 poles; to James McClim-
 ans crossing. thence N 40 W 19 poles; N 89 N 29 poles
 N 67 W 12 poles; S 55 N 33 poles; S 81 N 30 poles; S 26
 N 37 poles; N 86 W $25\frac{1}{2}$ poles; N 47 W 53 poles; N 8 W 18
 poles; N 45 W 38 poles; N 62 W 18 poles; S 77 W $15\frac{1}{2}$ poles
 N $58\frac{1}{2}$ W 40 poles; N 77 W 17 poles; N 42 W 10 poles; N
 79 W 16 poles; S 61 W 14 poles; N 38 W 16 poles; to the
 line of Mrs Johnson & Mrs Johnson jr; thence with said
 line S 48 W 34 poles to a stake in the Yorketown
 road; thence with said road N 41 W $15\frac{1}{4}$ poles
 crossing a branch at 65 poles; N 35 W 105 poles
 to a stake in the line of Springers land and
 the line of Mrs Johnson jr Land, thence with the
 line of said lands N 74 E 106 poles to Springers
 and James McClimens corner in said Mrs Johnson jr
 line; thence with Springer & McClimens N 18 E 445 poles
 passing the corner of said McClimens and Joseph Chris-
 monis land at 164 poles to a large bur oak another corner
 to Springer in the line of Robert Armstrongs land; thence
 across the land of said Armstrong N 48 W 348 poles cross-
 ing branch at 30 poles, to a large Hickory corner to said
 Armstrong and said Jesse Rea; thence with their line
 North 354 poles crossing Walnut Run to the place
 of beginning.

Surveyed by D. B. Warner March 1856.