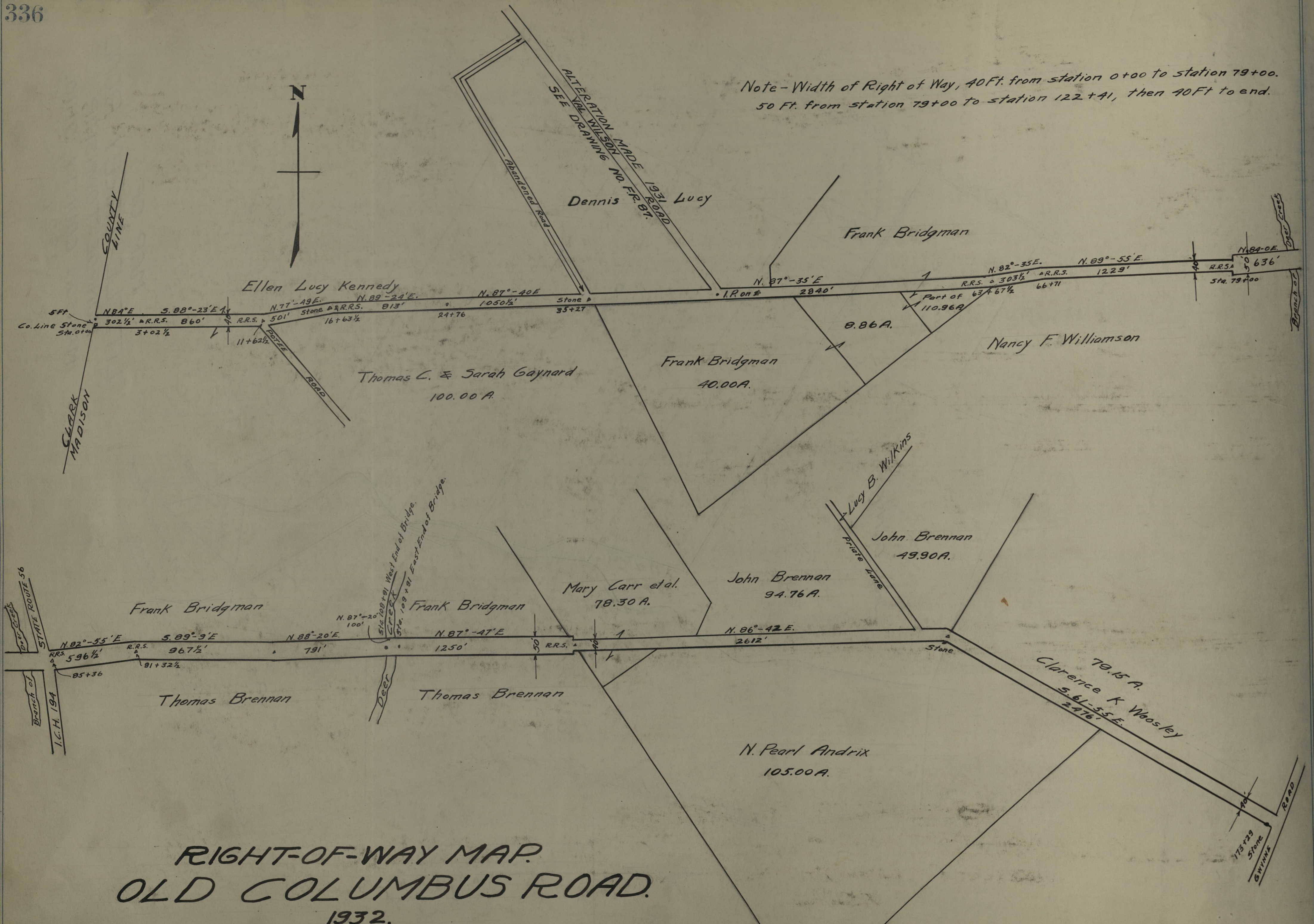


Note - Width of Right of Way, 40 Ft. from station 0+00 to station 79+00.  
50 Ft. from station 79+00 to station 122+41, then 40 Ft to end.



RIGHT-OF-WAY MAP.  
 OLD COLUMBUS ROAD.  
 1932.

For tie-ins see  
 Field Book No. 109

SCALE 1" = 400'

F.R.-94.