

SITE DATA

OWNER HIDDEN CREEK LTD.
P.O. BOX 253
WEST JEFFERSON, OHIO 43162
PHONE: 614-879-4062

ENGINEER CIVIL DESIGN ENGINEERING, INC.
6813 HAYHURST STREET
WORTHINGTON, OHIO 43085
PHONE: 614-431-5803

DEVELOPMENT TYPE LARGE LOT RESIDENTIAL SUBDIVISION

SITE ACREAGE 25.5 ACRES

DISTURBED ACREAGE 3.4 ACRES

AVERAGE SLOPE 1.0% - 6.0%

RUNOFF CURVE NUMBERS PRE: 77.2 (90% ROW CROPS GOOD @ 85)
(10% WOODS GOOD @ 70)

POST: 77 (RESIDENTIAL 2 ACRE)

ADJACENT AREAS RESIDENTIAL

STORM WATER MANAGEMENT DETENTION NOT REQUIRED
WATER QUALITY THRU WETLANDS IN PREVIOUS PHASE

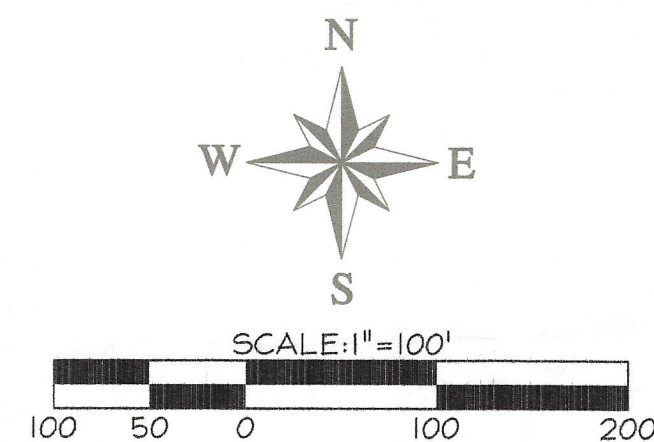
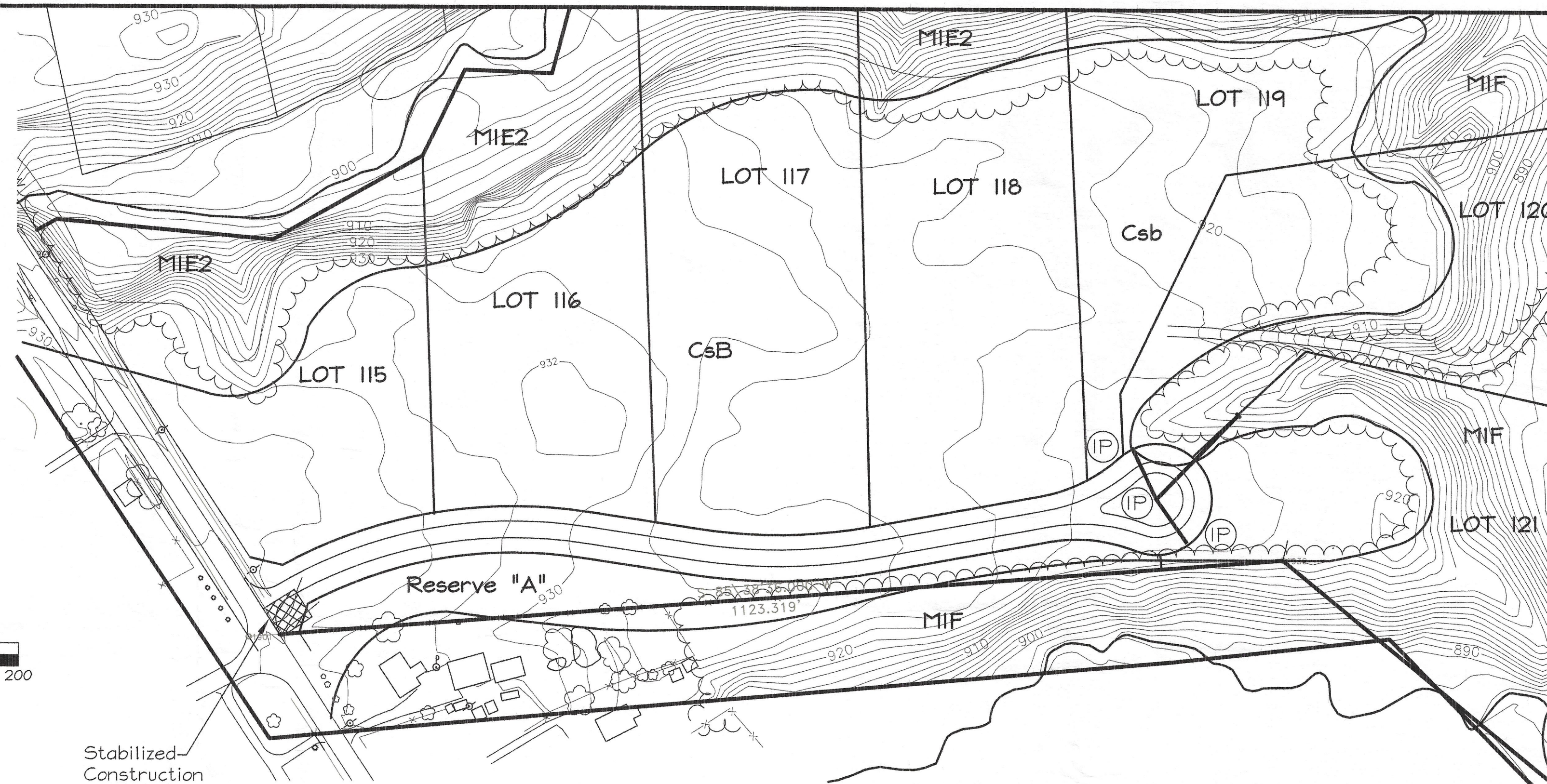
RECEIVING STREAM LITTLE DARBY CREEK

SOILS Csb - CROSBY SILT LOAM
2 TO 6 PERCENT SLOPES
MIE2 - MIAMI SILT LOAM
18 TO 25 PERCENT SLOPES, ERODED
MIF - MIAMI SILT LOAM
25 TO 50 PERCENT SLOPES
SLOAN SILTY CLAY LOAM
FREQUENTLY FLOODED

EXISTING LAND USE CROPLAND, WOODED & FLOOD PLAIN

GENERAL CONSTRUCTION SEQUENCE

- INSTALL STABILIZED CONSTRUCTION ENTRANCE.
- INSTALL SILT FENCE & TREE PROTECTION FENCE
- PERFORM SITE ROUGH GRADING.
- INSTALL STORM SEWERS AND CATCH BASINS. INLET PROTECTION FILTERS AROUND CATCH BASINS AS THEY ARE COMPLETED. INSTALL SEDIMENT BARRIERS IN DRAINAGE WAYS AS ROADWAY DITCHES ARE COMPLETED.
- INSTALL OTHER UNDERGROUND UTILITIES.
- FINE GRADE ROADWAY AREAS AND PLACE PAVEMENT. MAINTAIN EROSION CONTROL DEVICES UNTIL FINAL LANDSCAPING AND SEEDING HAS BEEN ESTABLISHED.
- REMOVE ALL EROSION PROTECTION DEVICES.

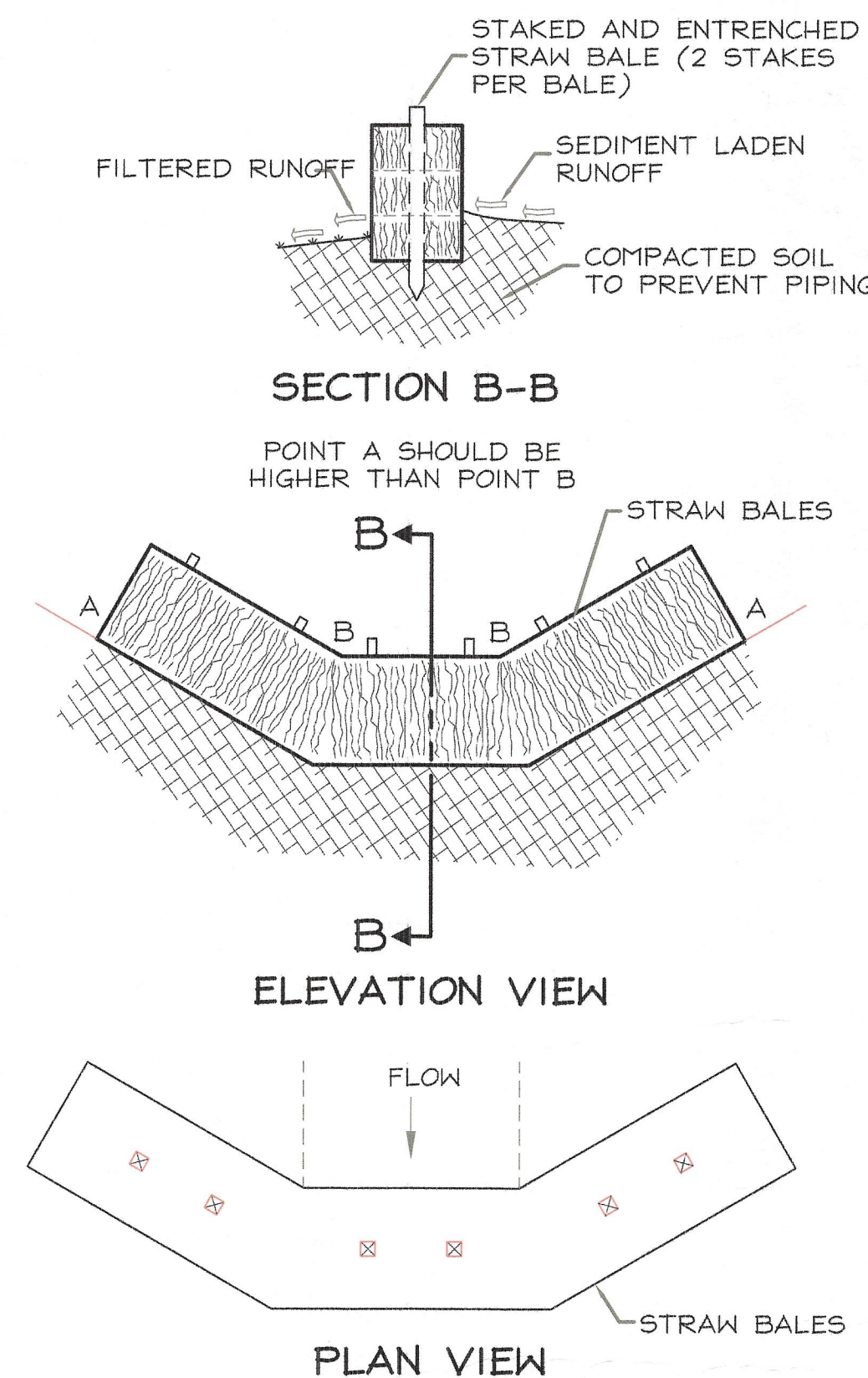


EROSION CONTROL PLAN

SPECIFICATIONS FOR SEEDING & MULCHING

SEED TYPE	SEEDING DATES	PER 1000 SQ. FT.	PER ACRE
TALL FESCUE & ANNUAL RYEGRASS	MARCH 1 TO SEPTEMBER 15	2 POUND & 1/2 POUNDS	80 POUNDS & 20 POUNDS
SMALL GRAIN STRAW		100 POUNDS OR 2 OR 3 BALES	2 TONS OR 50 BALES
FERTILIZER		25 POUNDS OF 12-12-12 OR THE EQUIVALENT	100 POUNDS OF 12-12-12 OR THE EQUIVALENT
TEMPORARY SEEDING			
RYE OR WHEAT	SEPTEMBER 15 TO OCTOBER 30	3 POUNDS	2 BUSHELS
SOIL PROTECTION			
SMALL GRAIN STRAW, MULCH	OCTOBER 30 TO MARCH 1	2 TO 3 BALES	2 TONS

STABILIZE DISTURBED GROUND PER TABLE 1 (PERMANENT STABILIZATION) AND TABLE 2 (TEMPORARY STABILIZATION) ON PAGES 16 & 17 OF OHIO PERMIT NO. OHC000002.



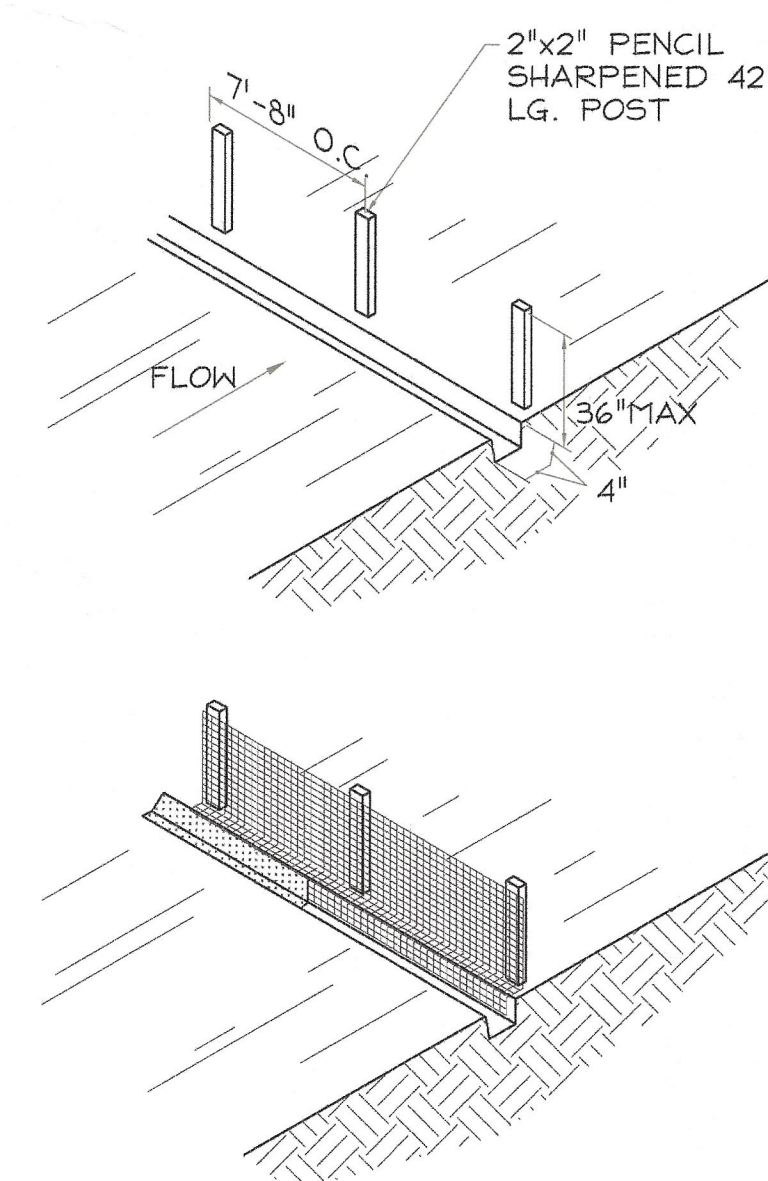
SEDIMENT BARRIER IN DRAINAGE WAY

CONTRACTOR SHALL PLACE SEDIMENT BARRIERS AS LOCATED ON PLAN SHEET IMMEDIATELY AFTER CONSTRUCTION OF DRAINAGE SWALES.

THE DITCH SHALL BE INSPECTED AFTER EACH RAIN AND REPAIRS MADE AS NEEDED.

SEDIMENT SHALL BE REMOVED AND THE BALES RESTORED TO THEIR ORIGINAL DIMENSION WHEN THE SEDIMENT HAS ACCUMULATED TO HALF THE DESIGN DEPTH OF THE TRAP. SEDIMENT REMOVED SHALL BE DEPOSITED IN SUCH A MANNER THAT IT WILL NOT ERODE.

SEDIMENT FILTERS SHALL BE REMOVED WHEN ITS DRAINAGE AREA HAS BEEN PROPERLY STABILIZED.



SILT FENCE DETAIL

SILT FENCE. THIS SEDIMENT BARRIER UTILIZES STANDARD STRENGTH OR EXTRA STRENGTH SYNTHETIC FILTER FABRICS. IT IS DESIGNED FOR SITUATIONS IN WHICH ONLY SHEET OR OVERLAND FLOWS ARE EXPECTED.

THE FILTER FABRIC SHALL BE PURCHASED IN A CONTINUOUS ROLL CUT TO THE LENGTH OF THE BARRIER TO AVOID THE USE OF JOINTS. WHEN JOINTS ARE NECESSARY FILTER CLOTH SHALL BE SPICED TOGETHER ONLY AT A SUPPORT POST WITH A MINIMUM OF 6" OVERLAP AND SECURELY SEALED.

POSTS SHALL BE SPACED A MAXIMUM OF 7'-8" O.C. AT THE BARRIER LOCATION AND DRIVEN SECURELY INTO THE GROUND (MINIMUM OF 12 INCHES). WHEN EXTRA STRENGTH FABRIC IS USED WITHOUT WIRE SUPPORT, FENCE POST SPACING SHALL NOT EXCEED 6 FEET.

A TRENCH SHALL BE EXCAVATED APPROXIMATELY 4 INCHES WIDE & 4 INCHES DEEP ALONG THE LINE OF THE POSTS AND UPSLOPE FROM THE BARRIER.

WHEN STANDARD STRENGTH FILTER FABRIC IS USED A WIRE MESH SUPPORT FENCE SHALL BE FASTENED SECURELY TO THE UPSLOPE SIDE OF THE POSTS USING HEAVY DUTY WIRE STAPLES AT LEAST 1 INCH LONG, THE WIRES OR LOG RINGS. THE WIRE MESH SHALL EXTEND INTO THE TRENCH A MINIMUM OF 2" & SHALL NOT EXTEND MORE THAN 3/8 INCHES ABOVE THE ORIGINAL GROUND SURFACE.

THE STANDARD STRENGTH FILTER FABRIC SHALL BE STAPLED OR WIRED TO THE FENCE AND 6 INCHES OF THE FABRIC SHALL BE EXTENDED INTO THE TRENCH. THE FABRIC SHALL NOT EXTEND MORE THAN 3/8 INCHES ABOVE THE ORIGINAL GROUND SURFACE. FILTER FABRIC SHALL NOT BE STAPLED TO EXISTING TREES.

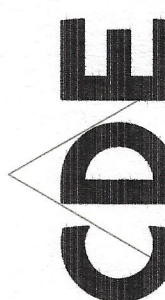
WHEN EXTRA STRENGTH FILTER FABRIC AND CLOSER POST SPACING ARE USED THE WIRE MESH SUPPORT FENCE MAY BE ELIMINATED. IN SUCH A CASE THE FILTER FABRIC IS STAPLED OR WIRED DIRECTLY TO THE POSTS.

THE TRENCH SHALL BE BACKFILLED AND SOIL COMPACTED OVER THE FILTER FABRIC.

- 1.) SET THE STAKES
- 2.) EXCAVATE A 4"x4" TRENCH UPSLOPE ALONG THE LINE STAKES
- 3.) STAPLE FILTER MATERIAL TO STAKES AND EXTEND IT INTO THE TRENCH
- 4.) BACKFILL AND COMPACT THE EXCAVATED SOIL.

HIDDEN CREEK AT THE DARBY

Phase 5
Madison County, Ohio



Civil Design Engineering, Inc.
6813 Hayhurst Street
Worthington, Ohio 43085
614-431-5803 Fax: 614-431-5804

Erosion Control

ISSUED:	
Preliminary	02-21-2007
Permit	
Construction	