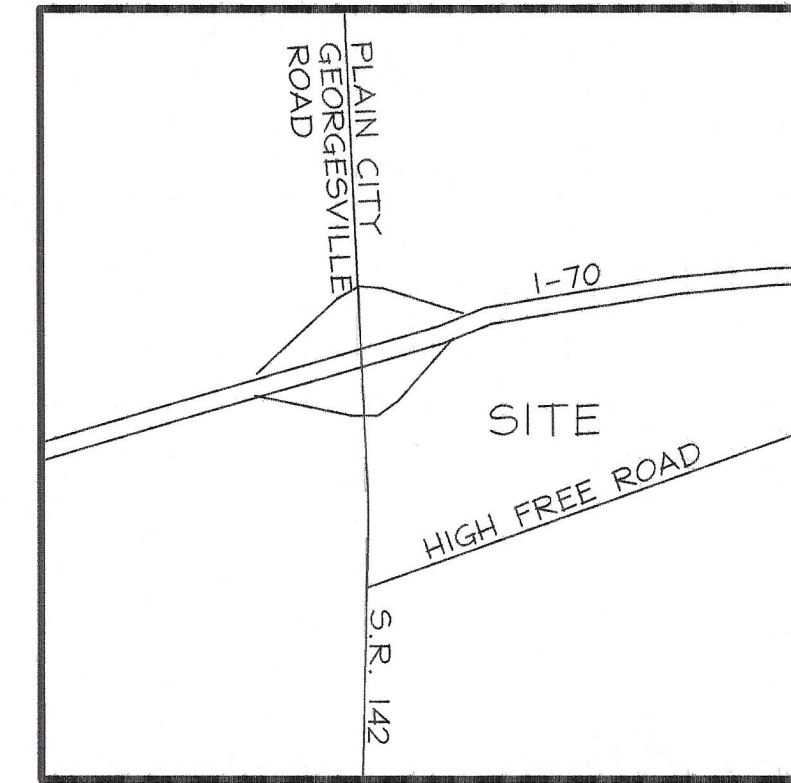


JEFFERSON TWP. MADISON COUNTY, OHIO SITE IMPROVEMENTS FOR SS. SIMON & JUDE CATHOLIC CHURCH 2005



LOCATION MAP
NOT TO SCALE

BENCH MARKS

UNKNOWN AT THIS TIME

INDEX

- 1 APPROVAL/TITLE SHEET
- 2 GENERAL NOTES/QUANTITIES
- 3 SITE UTILITY PLAN
- 4 SANITARY SERVICE PLAN
- 5-6 SITE GRADING PLAN
- 7 STORM PROFILES
- 8 EROSION CONTROL PLAN
- 9 EROSION CONTROL DETAILS

APPROVED BY

MADISON COUNTY SANITARY ENGINEER DATE _____

MADISON COUNTY SOIL & WATER CONSERVATION DISTRICT DATE _____

MADISON COUNTY ZONING INSPECTOR DATE _____

MADISON COUNTY BOARD OF HEALTH DATE _____



James E. Clausen
CIVIL DESIGN ENGINEERING, INC.

8-5-2005
DATE

APPROVAL/TITLE SHEET

ISSUED:	
PRELIMINARY	03-30-2005
PERMIT	05-14-2005
CONSTRUCTION	08-02-2005
AS BUILT	

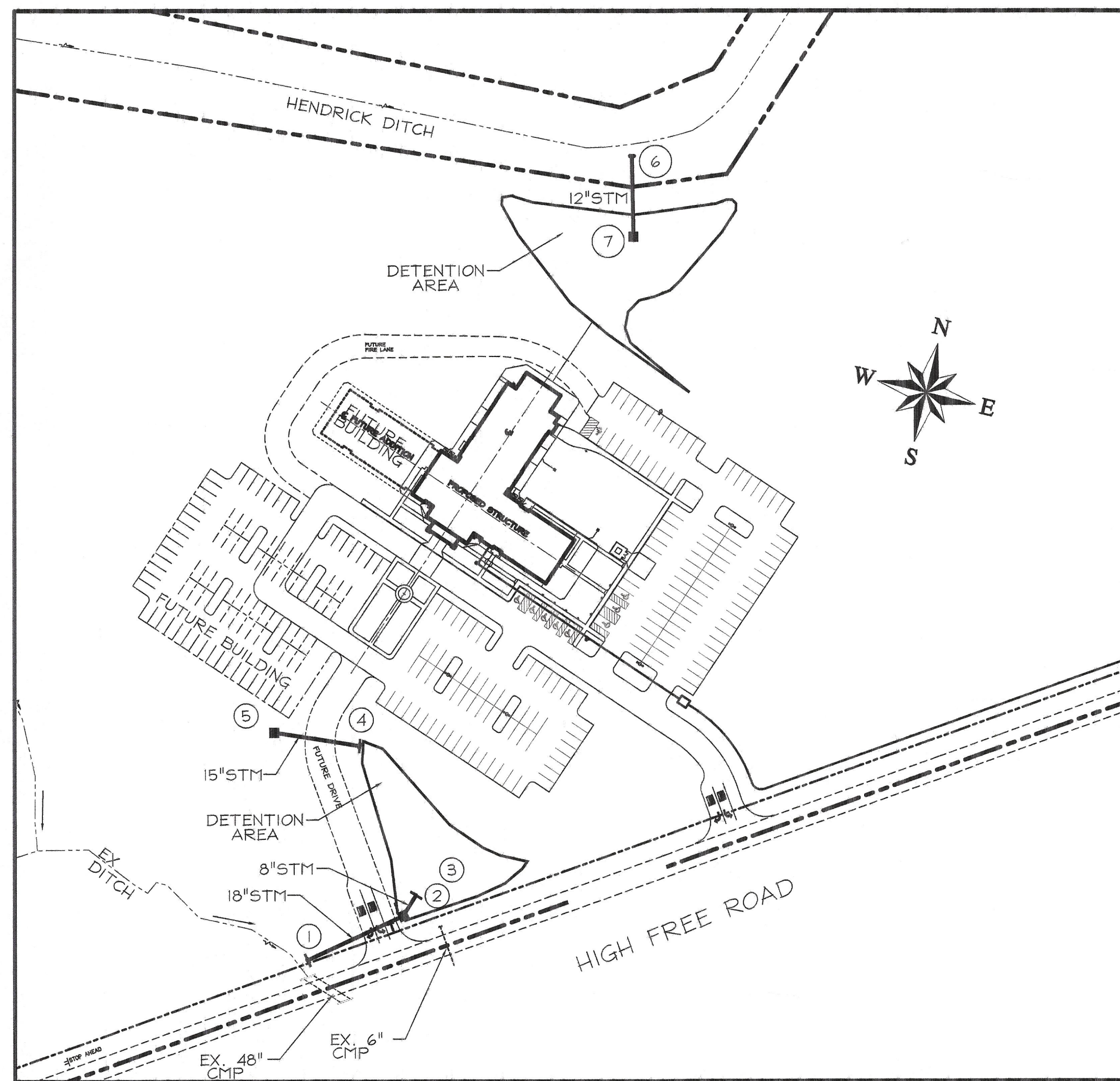
SS. SIMON & JUDE CATHOLIC CHURCH
 HIGH FREE PIKE
 MADISON COUNTY

CDE
 Civil Design Engineering, Inc.
 6813 HAYHURST STREET
 WORTHINGTON, OHIO 43085
 614-431-5803 FAX: 614-431-5804

STANDARD DRAWINGS

CITY OF COLUMBUS AND ODOT STANDARD DRAWINGS LISTED ON THIS PLAN SHALL BE CONSIDERED A PART THEREOF.

- ODOT
- CB-2-2-A
- CB-2-2-B
- HM-1.1
- HM-2.1
- AA-S145
- AA-S149



INDEX MAP
SCALE: 1"=100'

GENERAL NOTES

THE CURRENT MADISON COUNTY AND OHIO DEPARTMENT OF TRANSPORTATION CONSTRUCTION AND MATERIAL SPECIFICATIONS INCLUDING ALL SUPPLEMENTS THERETO, TOGETHER WITH THE REQUIREMENTS OF MADISON COUNTY IN FORCE ON THE DATE OF CONTRACT, SHALL GOVERN ALL MATERIALS, METHODS OF CONSTRUCTION, AND WORKMANSHIP INVOLVED IN THE IMPROVEMENTS SHOWN ON THESE PLANS, EXCEPT AS SUCH SPECIFICATIONS ARE MODIFIED BY THE FOLLOWING SPECIFICATIONS OR BY THE CONSTRUCTION DETAILS SET FORTH HEREIN.

THE CONTRACTOR SHALL NOTIFY THE MADISON COUNTY ENGINEER 24 HOURS PRIOR TO CONSTRUCTION.

THE CONTRACTOR SHALL OBTAIN ALL NECESSARY PERMITS.

THE CONTRACTOR SHALL CONFINE HIS ACTIVITIES TO THE PROJECT SITE UNDER DEVELOPMENT OR THE EXISTING RIGHT-OF-WAYS, CONSTRUCTION AND PERMANENT EASEMENTS AND SHALL NOT TRESPASS UPON OTHER PRIVATE PROPERTY WITHOUT THE WRITTEN CONSENT OF THE OWNER.

ALL ITEMS OF WORK CALLED FOR ON THE PLANS FOR WHICH NO SPECIFIC METHOD OF PAYMENT IS PROVIDED SHALL BE PERFORMED BY THE CONTRACTOR AND THE COST OF SAME SHALL BE INCLUDED IN THE PRICE BID FOR THE VARIOUS RELATED ITEMS.

ALL FIELD TILE BROKEN DURING EXCAVATION SHALL BE REPLACED TO ORIGINAL CONDITION OR CONNECTED TO THE STORM SEWER SYSTEM AS DIRECTED BY THE ENGINEER.

THE CONTRACTOR SHALL CAREFULLY PRESERVE BENCH MARKS, PROPERTY CORNERS, REFERENCE POINTS, STAKES AND OTHER SURVEY REFERENCE MONUMENTS OR MARKERS. IN CASES OF WILLFUL OR CARELESS DESTRUCTION, THE CONTRACTOR SHALL BE RESPONSIBLE FOR RESTORATION OF MARKERS. RESETTING OF MARKERS SHALL BE PERFORMED BY AN OHIO PROFESSIONAL SURVEYOR.

THE CONTRACTOR SHALL DISPOSE OF ALL SURPLUS EXCAVATION, AS DIRECTED BY THE OWNER.

THE DESIGN ENGINEER WILL NOT BE RESPONSIBLE FOR MEANS, METHODS, PROCEDURES, TECHNIQUES, OR SEQUENCES OF CONSTRUCTION THAT ARE NOT SPECIFIED HEREIN. THE DESIGN ENGINEER WILL NOT BE RESPONSIBLE FOR SAFETY ON THE JOB SITE, OR FOR FAILURE BY THE CONTRACTOR TO PERFORM WORK ACCORDING TO CONTRACT DOCUMENTS.

THE CONTRACTOR AND SUB-CONTRACTOR SHALL BE SOLELY RESPONSIBLE FOR COMPLYING WITH ALL FEDERAL, STATE AND LOCAL SAFETY REQUIREMENTS, TOGETHER WITH EXERCISING PRECAUTIONS AT ALL TIMES FOR THE PROTECTION OF PERSONS (INCLUDING EMPLOYEES) AND PROPERTY. IT IS ALSO THE SOLE RESPONSIBILITY OF THE CONTRACTOR AND SUB-CONTRACTOR TO INITIATE, MAINTAIN AND SUPERVISE ALL SAFETY REQUIREMENTS, PRECAUTIONS AND PROGRAMS IN CONNECTION WITH THE WORK.

ALL TRAFFIC CONTROL DEVICES SHALL BE FURNISHED, ERECTED, MAINTAINED AND REMOVED BY THE CONTRACTOR IN ACCORDANCE WITH THE "OHIO MANUAL OF TRAFFIC CONTROL DEVICES FOR CONSTRUCTION AND MAINTENANCE OPERATIONS", COPIES OF WHICH ARE AVAILABLE FROM THE OHIO DEPARTMENT OF TRANSPORTATION, BUREAU OF TRAFFIC, 1980 WEST BROAD STREET, COLUMBUS, OHIO 43223.

THE IDENTITY AND LOCATION OF THE EXISTING UNDERGROUND FACILITIES KNOWN TO BE LOCATED IN THE CONSTRUCTION AREA HAVE BEEN SHOWN ON THE PLANS AS ACCURATELY AS PROVIDED BY THE OWNER OF THE UNDERGROUND UTILITY. MADISON COUNTY AND/OR ENGINEER ASSUMES NO RESPONSIBILITY AS TO THE ACCURACY OR THE DEPTHS OF THE UNDERGROUND FACILITIES WHETHER SHOWN ON THE PLANS OR NOT.

SUPPORT, PROTECTION AND RESTORATION OF ALL EXISTING UTILITIES AND APPURTENANCES SHALL BE THE RESPONSIBILITY OF THE CONTRACTOR. THE COST OF THIS WORK SHALL BE INCLUDED IN THE PRICE BID FOR THE VARIOUS ITEMS.

THE CONTRACTOR SHALL CAUSE NOTICE TO BE GIVEN TO THE OHIO UTILITIES PROTECTION SERVICE (TELEPHONE 800-362-2764 - TOLL FREE) AND TO THE OWNERS OF UNDERGROUND UTILITY FACILITIES SHOWN ON THE PLANS WHO ARE NOT MEMBERS OF A REGISTERED UNDERGROUND PROTECTION SERVICE IN ACCORDANCE WITH SECTION 153.64 OF THE REVISED CODE. THE ABOVE MENTIONED NOTICE SHALL BE GIVEN AT LEAST TWO WORKING DAYS PRIOR TO START OF CONSTRUCTION.

STORM NOTES

UNLESS OTHERWISE NOTED ON THE PLANS ALL STORM SEWERS SHALL BE SMOOTH WALLED ADS N-12 PIPE AS MANUFACTURED BY ADVANCED DRAINAGE SYSTEMS INCORPORATED.

GRANULAR BACKFILL SHALL BE USED IN ALL INSTANCES OF PAVEMENT CROSSINGS. MATERIALS SHALL BE COMPACTED GRANULAR MATERIAL, ITEM 310 TYPE A GRADING (NO GRITS ALLOWED), PLACED WITHIN LIMITS SHOWN ON THE PLAN INCLUDING AROUND ALL INLET STRUCTURES. GRANULAR BACKFILL SHALL EXTEND FROM THE BOTTOM OF THE TRENCH TO A PLANE 6-INCHES BELOW THE SUBGRADE.

WHERE THE STORM SEWER CROSSES A PROPOSED RIGHT-OF-WAY THE TRENCH BACKFILL SHALL BE COMPACTED GRANULAR MATERIAL, ITEM 310 TYPE A GRADING (NO GRITS ALLOWED), FROM THE BOTTOM OF THE TRENCH TO A PLANE 6-INCHES BELOW THE SUBGRADE. THE LIMITS OF PLACEMENT SHALL BE FROM 5' OUTSIDE BOTH EDGES OF PAVEMENT. ALL OTHER TRENCH BACKFILL SHALL BE COMPACTED TYPE C, UNLESS OTHERWISE NOTED ON THE PLANS. COST OF BACKFILL TO BE INCLUDED IN THE PRICE BID FOR THE VARIOUS SEWER ITEMS.

PIPE WITH LESS THAN ONE FOOT OF COVER TO SURFACE OF PAVEMENT SHALL BE REINFORCED CONCRETE PIPE, CLASS V, OR SHALL BE CONCRETE ENCASED.

EROSION CONTROL

THE CURRENT MADISON COUNTY EROSION CONTROL, AND STORMWATER CONTROL REGULATIONS, TOGETHER WITH THE ENCLOSED EROSION CONTROL PLAN SHALL GOVERN ALL EROSION CONTROL REQUIREMENTS FOR THE PROJECT.

THE ENCLOSED SEDIMENTATION CONTROL NOTES AND DETAILS FOUND ON SHEETS 7 & 8 SHALL SERVE AS AN INITIAL GUIDELINE FOR THE PROJECT. THE CONTRACTOR SHALL BE REQUIRED TO REVIEW THE ELEMENTS REQUIRED TO CONTROL EROSION AS THE PROJECT PROCEEDS. THE CONTRACTOR SHALL COORDINATE THIS REVIEW WITH THE LOCAL AUTHORITY (MADISON COUNTY SOIL AND WATER CONSERVATION DISTRICT).

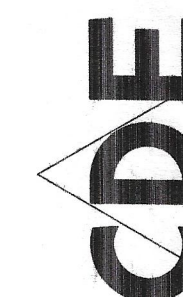
UTILITIES

COORDINATE CONNECTIONS WITH APPROPRIATE LOCAL OFFICES NOTED BELOW:

Estimate of Quantities

Item	Quant.	Unit	Description
DRAINAGE			
601	14.2	CY	ROCK CHANNEL PROTECTION TYPE C W/O FILTER
603	12.5	LF	8" CONDUIT, TYPE B
603	80	LF	12" CONDUIT, TYPE C
603	86	LF	15" CONDUIT, TYPE B
603	105	LF	18" CONDUIT, TYPE B
604	2	EA	CATCH BASIN 2-2-A
604	1	EA	CATCH BASIN 2-2-B
604	1	EA	FULL HEIGHT HEADWALL HW-1.1 (8")
604	3	EA	HALF HEIGHT HEADWALL HW-2.1 (12", 15" & 18")
SPEC	2	EA	ORIFICE PLATE
MISCELLANEOUS			
207	LS		EROSION & SEDIMENTATION CONTROL

QUANTITIES SHOWN ARE NOT COMPLETE. ITEMS LISTED ARE FOR INFORMATION AND ARE ESTIMATES ONLY. THE CONTRACTOR SHALL CONSTRUCT THE PROJECT IN ACCORDANCE WITH THE PLANS AND SPECIFICATIONS AND SHALL NOT RELY ON QUANTITIES LISTED OR NOT LISTED HEREON.

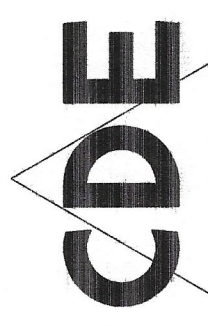
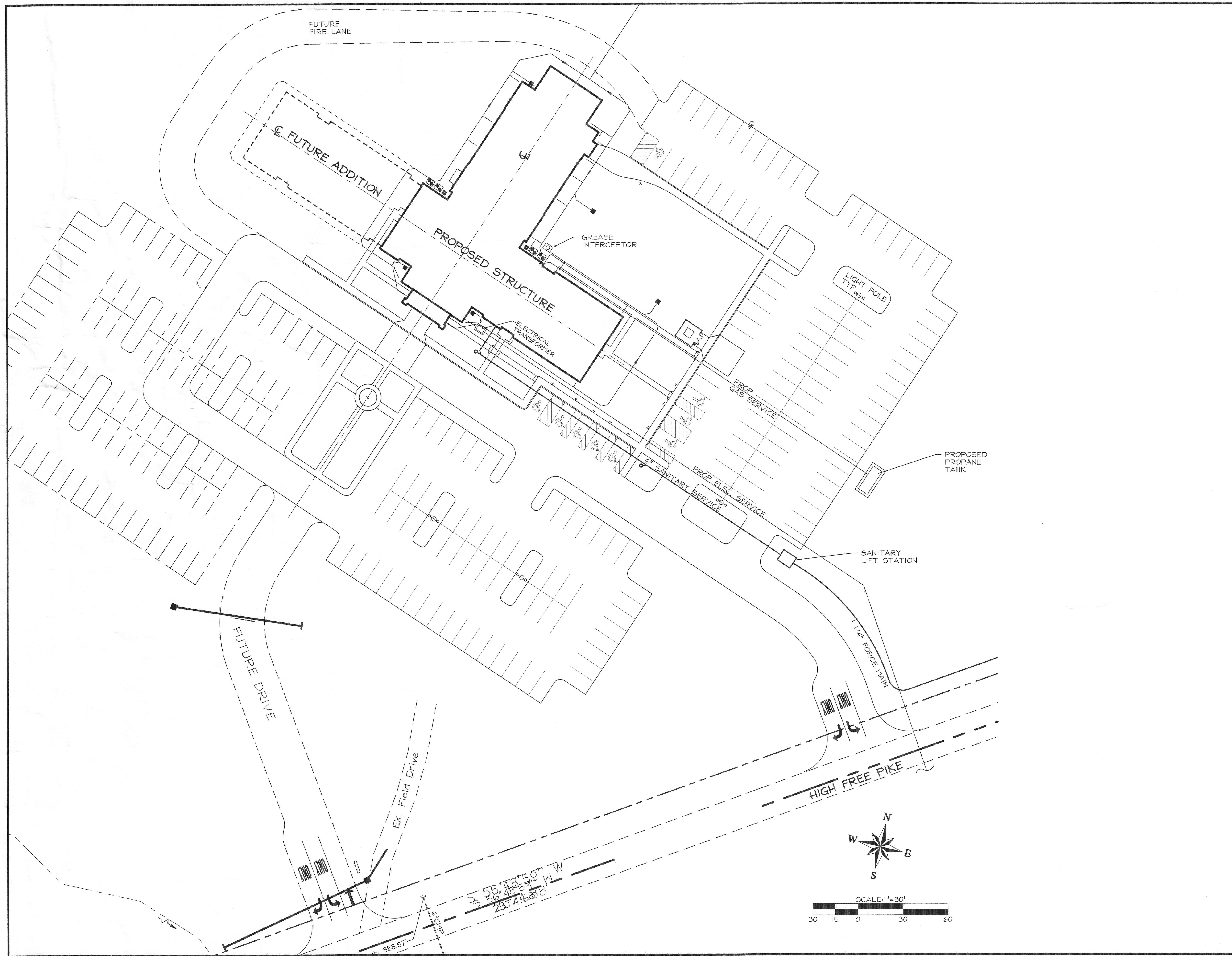


Civil Design Engineering, Inc.
6913 HAYHURST STREET
WORTHINGTON, OHIO 43085
614-431-5803 FAX: 614-431-5804

SS. SIMON & JUDE CATHOLIC CHURCH
HIGH FREE PIKE
MADISON COUNTY

GENERAL NOTES

ISSUED:	
PRELIMINARY	03-30-2005
PERMIT	05-14-2005
CONSTRUCTION	08-02-2005
AS BUILT	

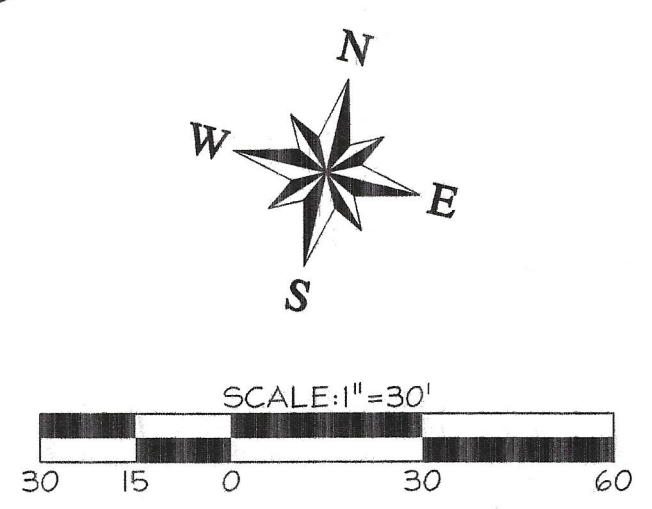


Civil Design Engineering, Inc.
 6813 HATHURST STREET
 MADISON, MO 64108
 614-431-5803 FAX: 614-431-5804

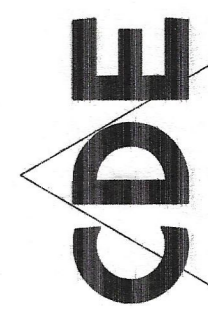
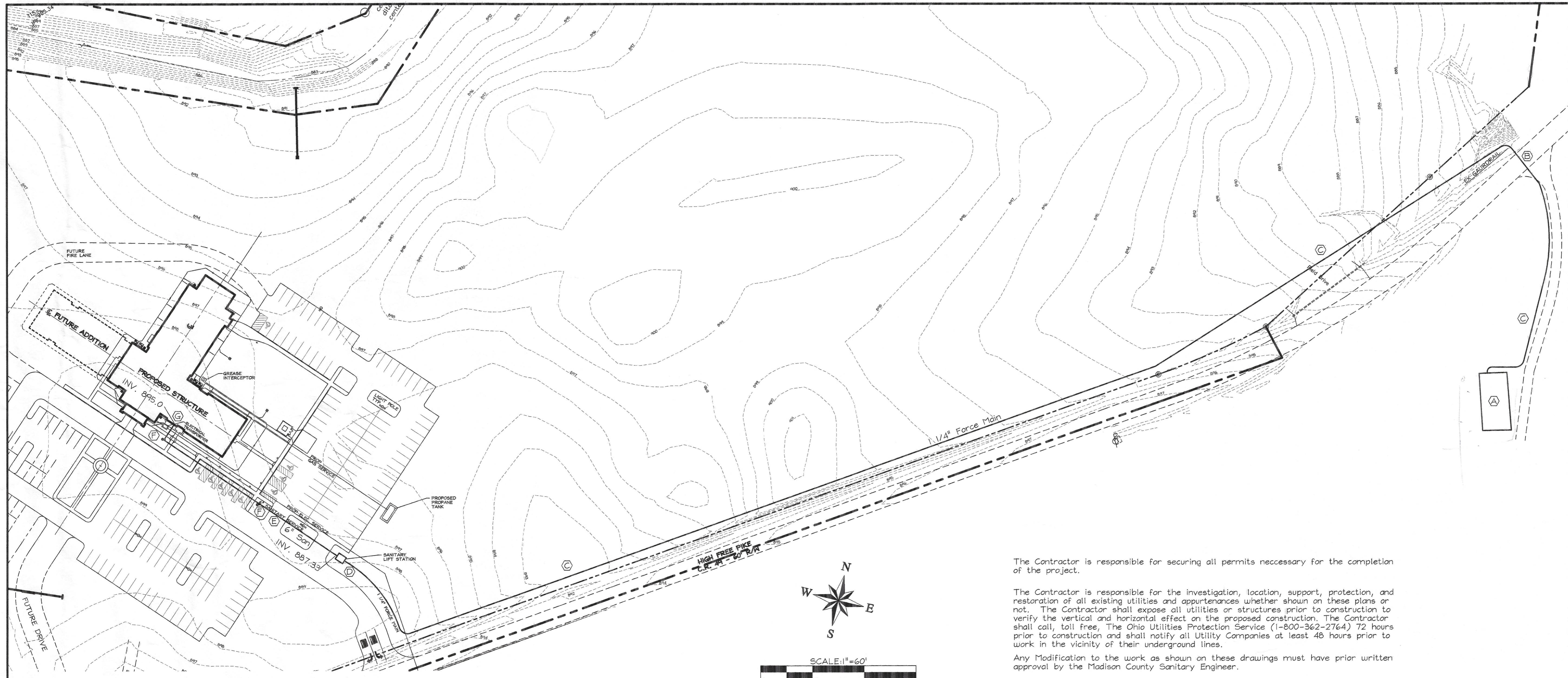
SS. SIMON & JUDE CATHOLIC CHURCH
 HIGH FREE PIKE
 MADISON COUNTY

UTILITY PLAN

ISSUED:	
PRELIMINARY	03-30-2005
PERMIT	05-14-2005
CONSTRUCTION	08-02-2005
AS BUILT	



50.48759' W
 56.48591' W
 2374.608'

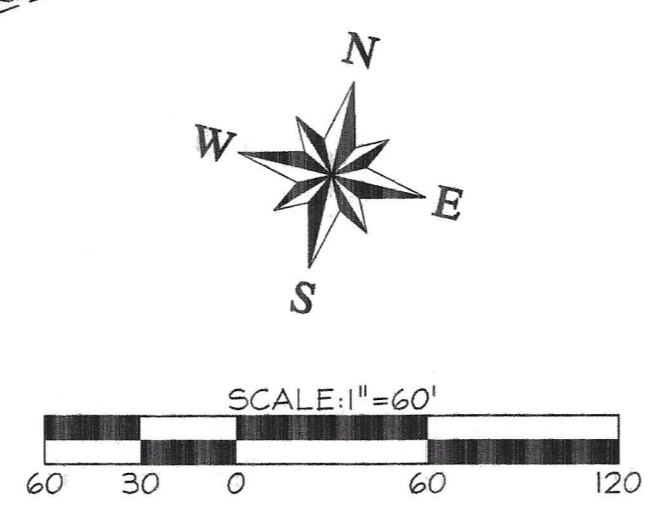
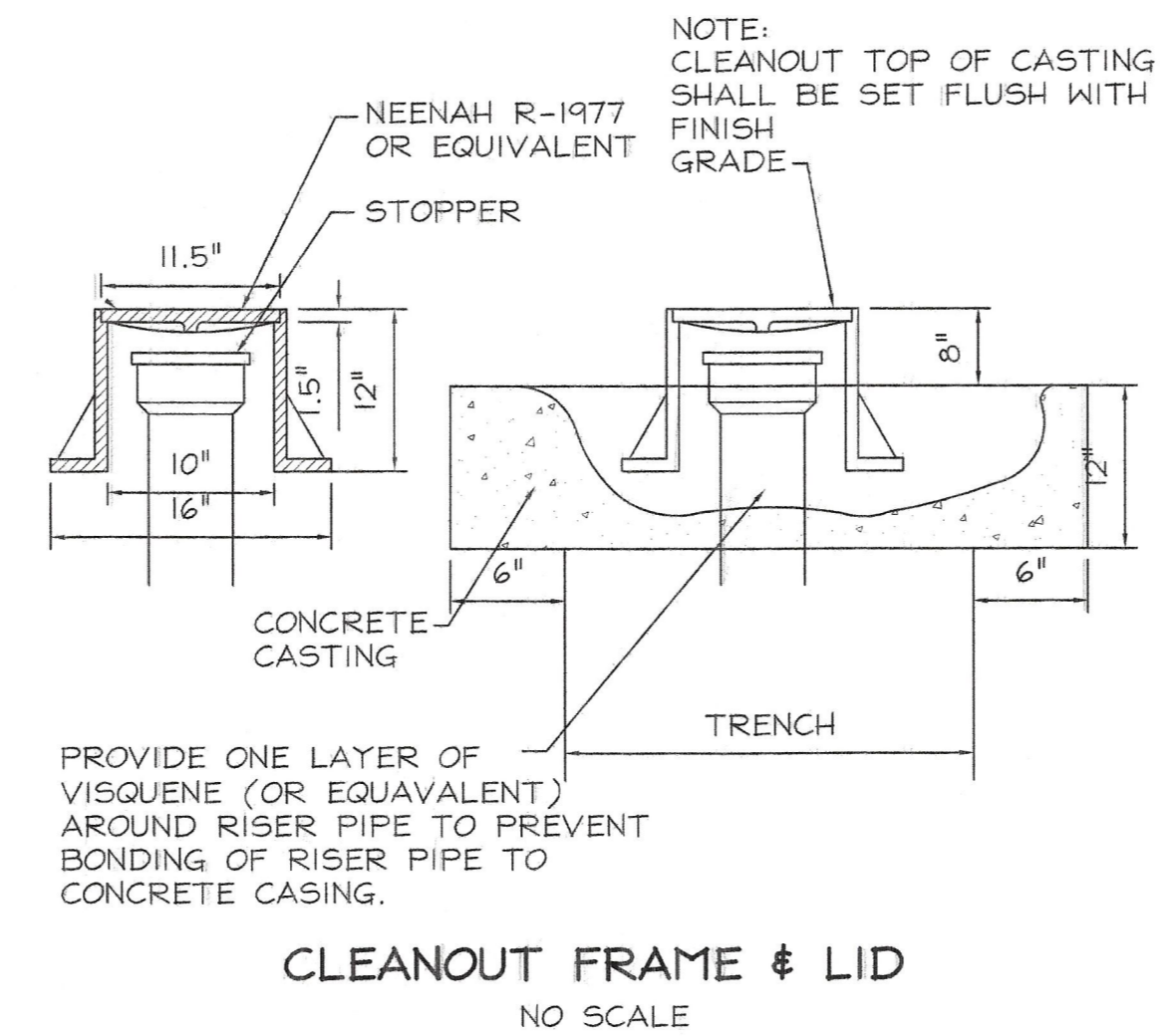
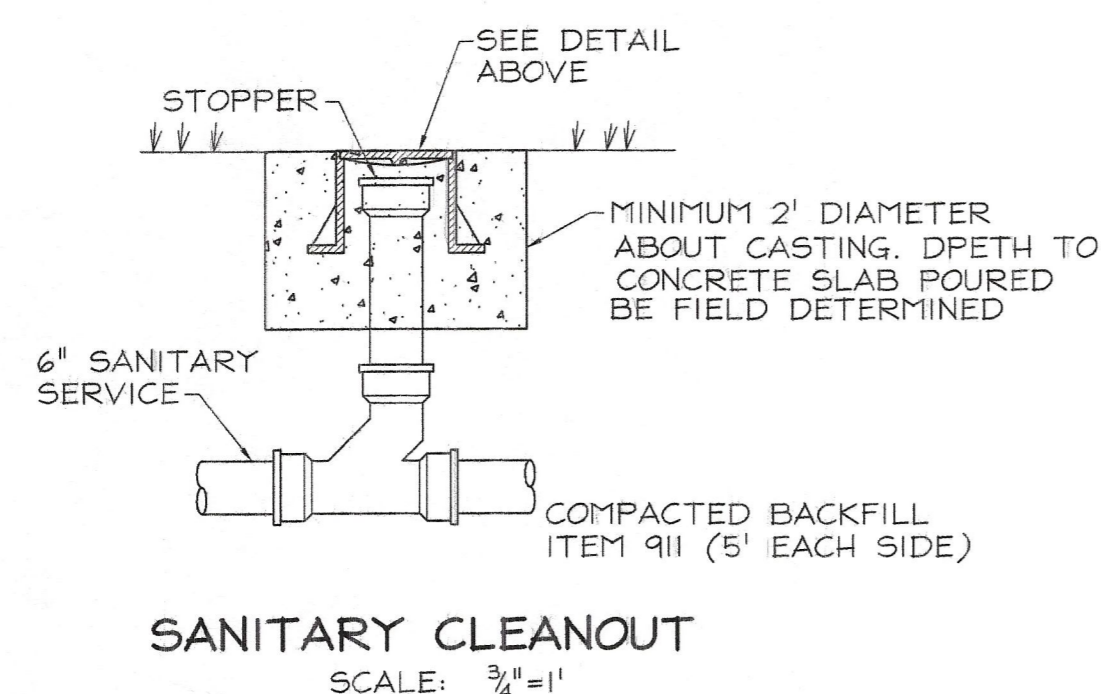


Civil Design Engineering, Inc.
6813 HAYHURST STREET
WORKINGTON, OHIO 43085
614-431-5803 FAX: 614-431-5804

SS. SIMON & JUDE CATHOLIC CHURCH
HIGH FREE PIKE
MADISON COUNTY

Coded Notes

- (A) Connect to existing treatment plant. Coordinate connection with Paul Maddux, Plant Operator @ 614-205-7382.
- (B) Bore 1 1/4" Force Main under High Free Pike
- (C) 1 1/4" Force Main buried 4.5' below existing ground. Force Main shall meet the requirements of ASTM D-3350 and pressure rated at 160 p.s.i.
- (D) Sanitary Lift Station
TC = 898.00 INV. 6" = 887.33
Environment One Model 2016 -160 with Duplex Alternating Alarm Panel Hour Meter and Timer.
- (E) 6" PVC Sanitary Service @ 2.08% min grade
- (F) Clean-Out - See detail this sheet
- (G) Verify Invert with Plumbing Contractor



The Contractor is responsible for securing all permits necessary for the completion of the project.

The Contractor is responsible for the investigation, location, support, protection, and restoration of all existing utilities and appurtenances whether shown on these plans or not. The Contractor shall expose all utilities or structures prior to construction to verify the vertical and horizontal effect on the proposed construction. The Contractor shall call, toll free, The Ohio Utilities Protection Service (1-800-362-2764) 72 hours prior to construction and shall notify all Utility Companies at least 48 hours prior to work in the vicinity of their underground lines.

Any Modification to the work as shown on these drawings must have prior written approval by the Madison County Sanitary Engineer.

The Design Engineer shall not be responsible for the means, methods, procedures, techniques or sequences of construction not specified herein, nor for the safety on the job site, nor shall the design engineer be responsible for the contractor's failure to carry out the work in accordance with the contract documents.

Roof drains, Foundation drains, and other Clean Water connections to the Sanitary Sewer System are prohibited.

All temporary Traffic Control Devices shall be furnished, erected, maintained and removed by the Contractor in accordance with the "Ohio Manual of Uniform Traffic Control Devices for Construction and Maintenance Operations", copies of which are available from the Ohio Department of Transportation, Bureau of Traffic, 1980 West Broad Street, Columbus, Ohio 43223. Special Duty Police Officers having Jurisdiction within the City of Upper Arlington shall be used in lieu of "Flagmen" wherever the Manual requires "Flagmen". Steady Burning Type C Lights shall be required on all Barricades, Drums, and Similar Traffic Control Devices in use at night. Cones are not approved for use at night.

Two-way, one lane traffic may be maintained during construction operations on High Free Pike in accordance with page C-18 of the Ohio Manual.

The Contractor shall carefully preserve bench marks, property corners, reference points stakes and other survey reference monuments or markers. In cases of willful or careless destruction, the Contractor shall be responsible for restorations. Resetting of markers shall be performed by an Ohio Professional Surveyor as approved by the Engineer.

Force main service shall be pressure tested in accordance with Section 801.12 of the City of Columbus Construction and Material Specification with pressure maintained at 100 p.s.i.

Non-Rubber Tired Vehicles: To avoid damage to existing pavement, curb and gutter and other surface structures. All construction equipment used on this project shall be equipped with rubber tires. All outriggers and any other equipment appurtenances shall also be rubber padded to avoid damage. Any damage to existing pavement or curb and gutter or other surface structures including nicks, scratches, cracks, and chips shall be repaired or replaced as directed by the City's Representative at Contractor's expense.

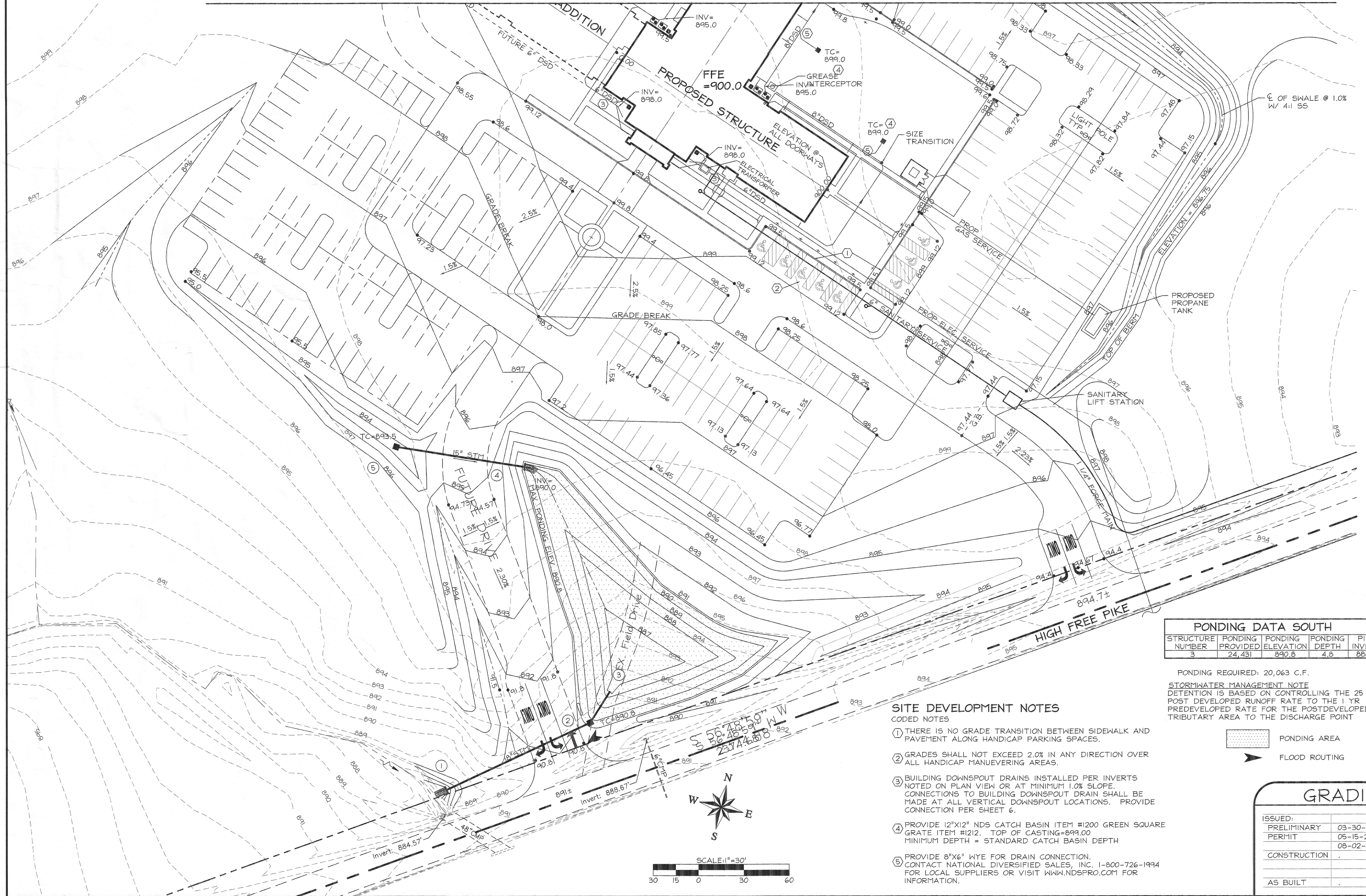
The Contractor shall restore all disturbed areas to an equal or better condition than existed prior to construction.

Operation and maintenance of the force main service, including portions located within the public right-of-way, shall be the sole responsibility of the Developer.

SANITARY SERVICE PLAN

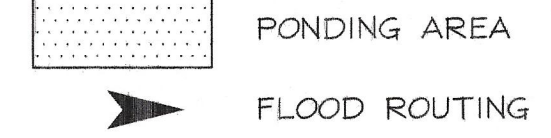
ISSUED:	
PERMIT	06-07-05
	08-02-05
CONSTRUCTION	
AS BUILT	

MATCH LINE SEE SHEET 5 OF 10



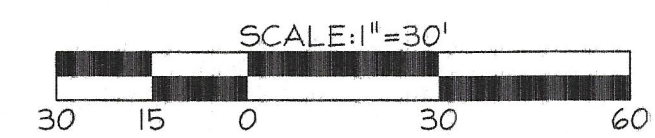
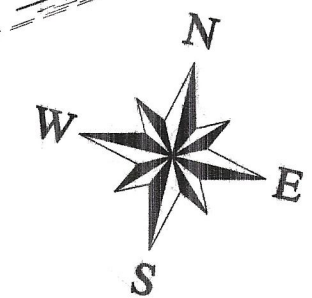
PONDING DATA SOUTH				
STRUCTURE NUMBER	PONDING PROVIDED	PONDING ELEVATION	PONDING DEPTH	PIPE INVERT
3	24,431	890.8	4.8	886.0

PONDING REQUIRED: 20,063 C.F.
 STORMWATER MANAGEMENT NOTE
 DETENTION IS BASED ON CONTROLLING THE 25 YR POST DEVELOPED RUNOFF RATE TO THE 1 YR PREDEVELOPED RATE FOR THE POSTDEVELOPED TRIBUTARY AREA TO THE DISCHARGE POINT

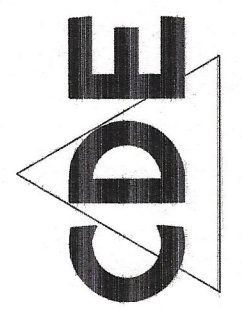


SITE DEVELOPMENT NOTES

- CODED NOTES
- 1 THERE IS NO GRADE TRANSITION BETWEEN SIDEWALK AND PAVEMENT ALONG HANDICAP PARKING SPACES.
 - 2 GRADES SHALL NOT EXCEED 2.0% IN ANY DIRECTION OVER ALL HANDICAP MANEUVERING AREAS.
 - 3 BUILDING DOWNSPOUT DRAINS INSTALLED PER INVERTS NOTED ON PLAN VIEW OR AT MINIMUM 1.0% SLOPE. CONNECTIONS TO BUILDING DOWNSPOUT DRAIN SHALL BE MADE AT ALL VERTICAL DOWNSPOUT LOCATIONS. PROVIDE CONNECTION PER SHEET 6.
 - 4 PROVIDE 12"x12" NDS CATCH BASIN ITEM #1200 GREEN SQUARE GRATE ITEM #1212. TOP OF CASTING=899.00 MINIMUM DEPTH = STANDARD CATCH BASIN DEPTH
 - 5 PROVIDE 8"x6" WYE FOR DRAIN CONNECTION. CONTACT NATIONAL DIVERSIFIED SALES, INC. 1-800-726-1994 FOR LOCAL SUPPLIERS OR VISIT WWW.NDSPRO.COM FOR INFORMATION.



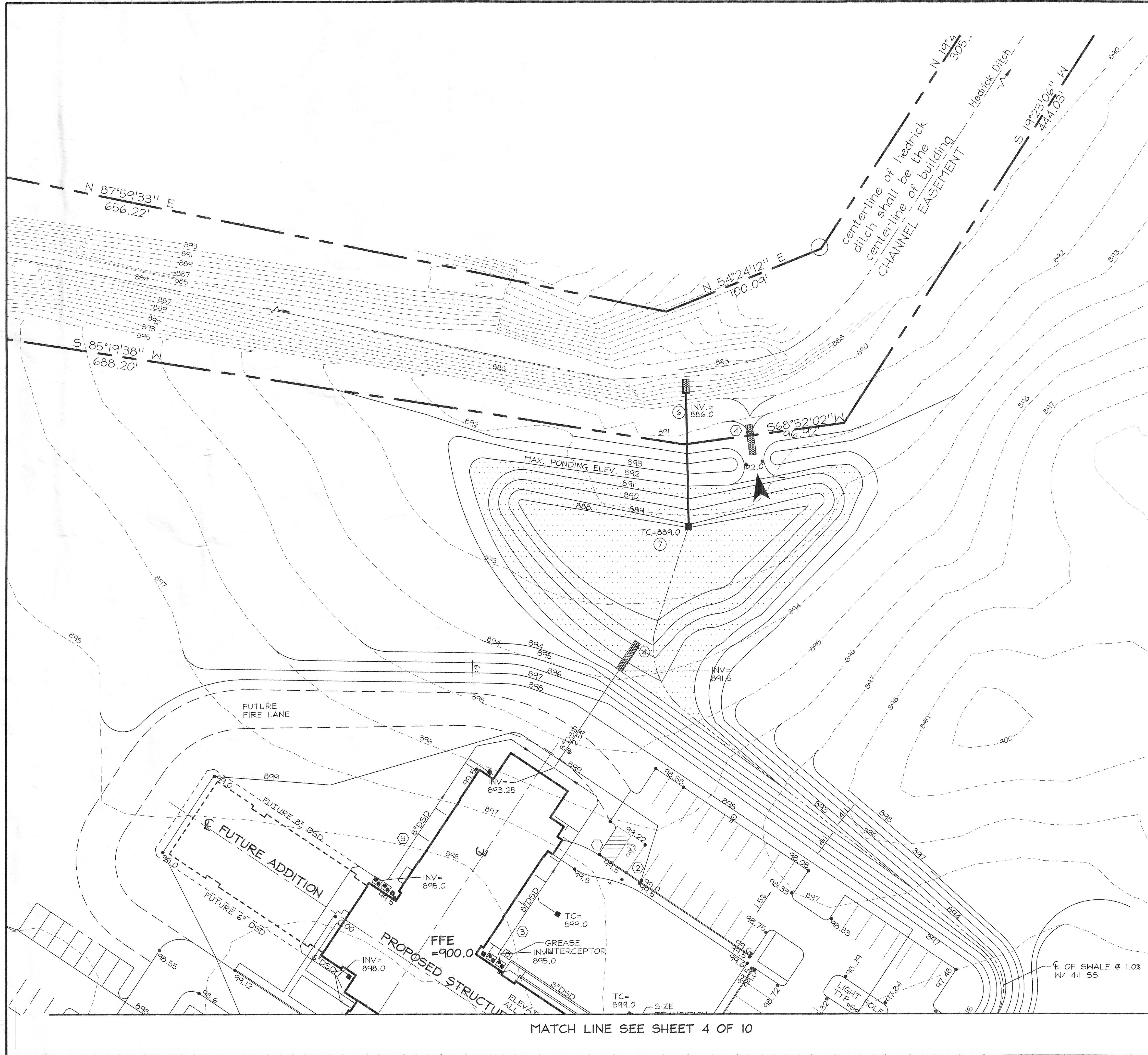
SS. SIMON & JUDE CATHOLIC CHURCH
 HIGH FREE PIKE
 MADISON COUNTY



Civil Design Engineering, Inc.
 6813 HAYHURST STREET
 WORTHINGTON, OHIO 43085
 614-431-5803 FAX: 614-431-5804

GRADING PLAN

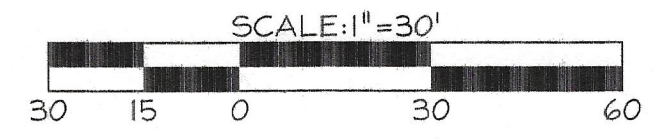
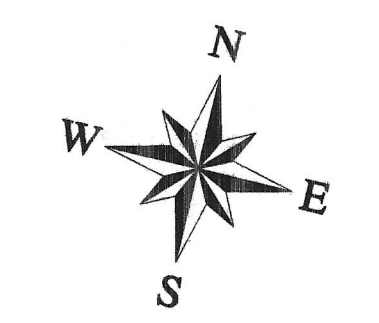
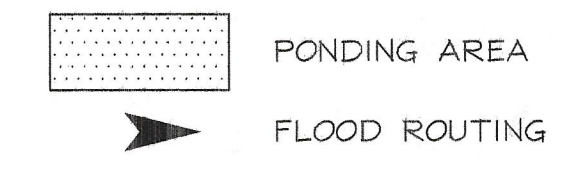
ISSUED:	
PRELIMINARY	03-30-2005
PERMIT	05-15-2005
CONSTRUCTION	06-02-2005
AS BUILT	



- SITE DEVELOPMENT NOTES**
 CODED NOTES
- ① THERE IS NO GRADE TRANSITION BETWEEN SIDEWALK AND PAVEMENT ALONG HANDICAP PARKING SPACES.
 - ② GRADES SHALL NOT EXCEED 2.0% IN ANY DIRECTION OVER ALL HANDICAP MANUEVERING AREAS.
 - ③ BUILDING DOWNSPOUT DRAINS INSTALLED PER INVERTS NOTED ON PLAN VIEW OR AT MINIMUM 1.0% SLOPE. CONNECTIONS TO BUILDING DOWNSPOUT DRAIN SHALL BE MADE AT ALL VERTICAL DOWNSPOUT LOCATIONS. PROVIDE CONNECTION PER SHEET 6.
 - ④ 4'X20'X1.5' ROCK CHANNEL PROTECTION TYPE C W/O FILTER

PONDING DATA SOUTH				
STRUCTURE NUMBER	PONDING PROVIDED	PONDING ELEVATION	PONDING DEPTH	TOP CASTING
7	53,155	892.0	5.0	889.0

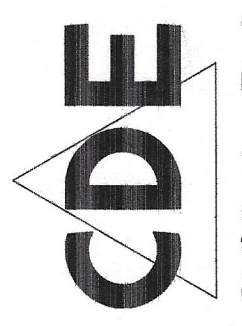
PONDING REQUIRED: 22,145 C.F.
STORMWATER MANAGEMENT NOTE
 DETENTION IS BASED ON CONTROLLING THE 25 YR POST DEVELOPED RUNOFF RATE TO THE 1 YR PREDEVELOPED RATE FOR THE POSTDEVELOPED TRIBUTARY AREA TO THE DISCHARGE POINT



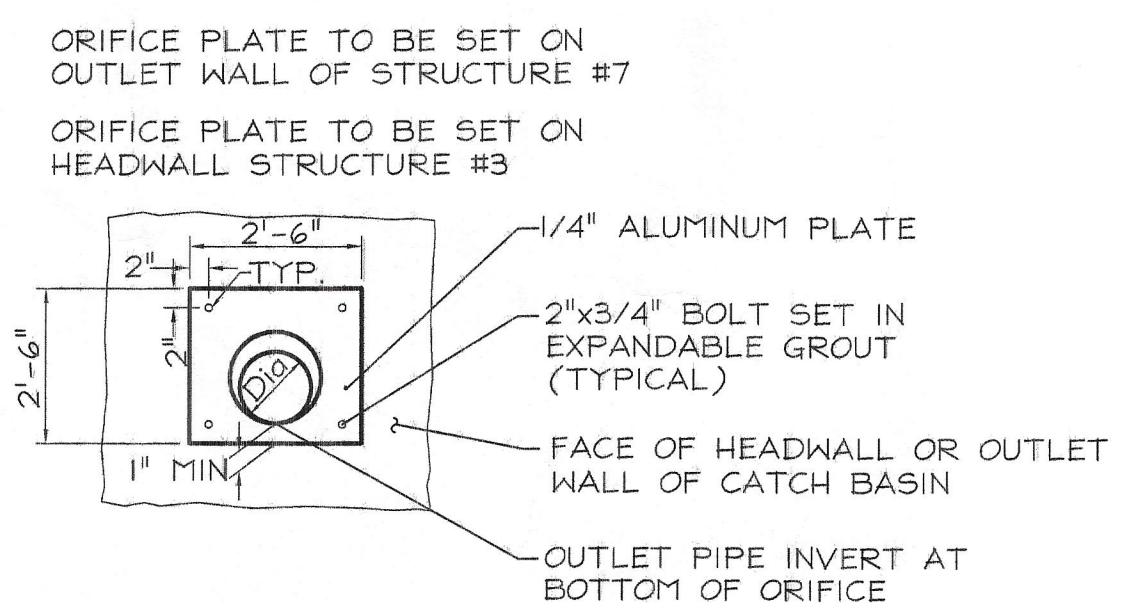
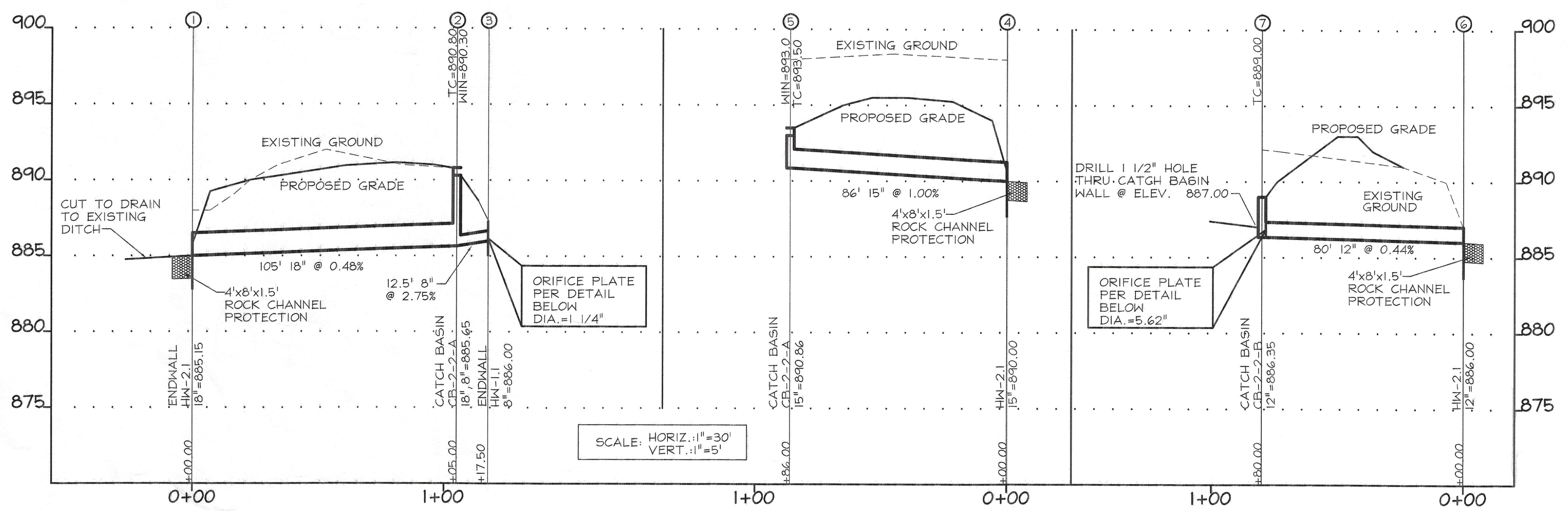
GRADING PLAN

ISSUED:	
PRELIMINARY	03-30-2005
PERMIT	05-14-2005
CONSTRUCTION	08-02-2005
AS BUILT	

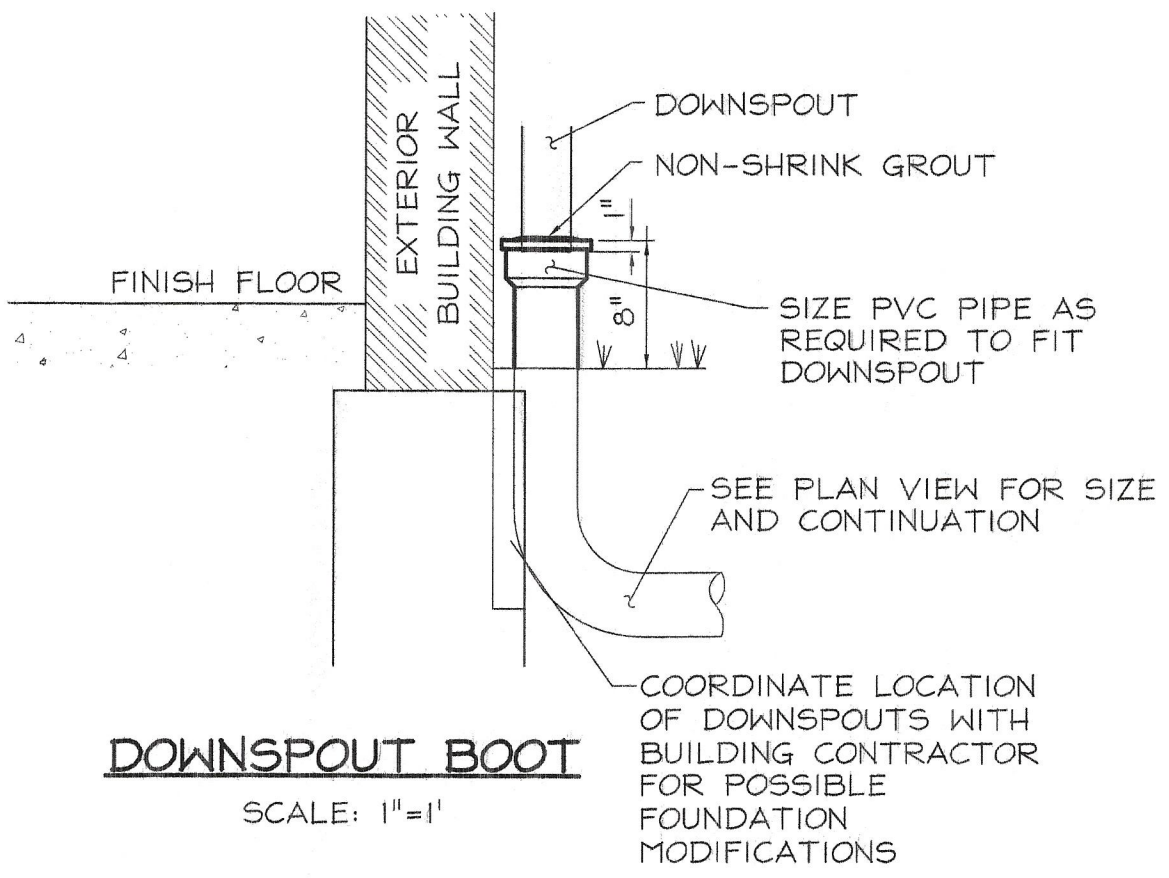
SS. SIMON & JUDE CATHOLIC CHURCH
 HIGH FREE PIKE
 MADISON COUNTY



Civil Design Engineering, Inc.
 6813 HAYHURST STREET
 SUITE 100
 MADISON, MISSOURI 63704-4335
 TEL: 614-431-5805 FAX: 614-431-5804



ORIFICE PLATE DETAIL
NOT TO SCALE
STRUCTURE #3 - DIA. = 1.25"
STRUCTURE #7 - DIA. = 5.62"

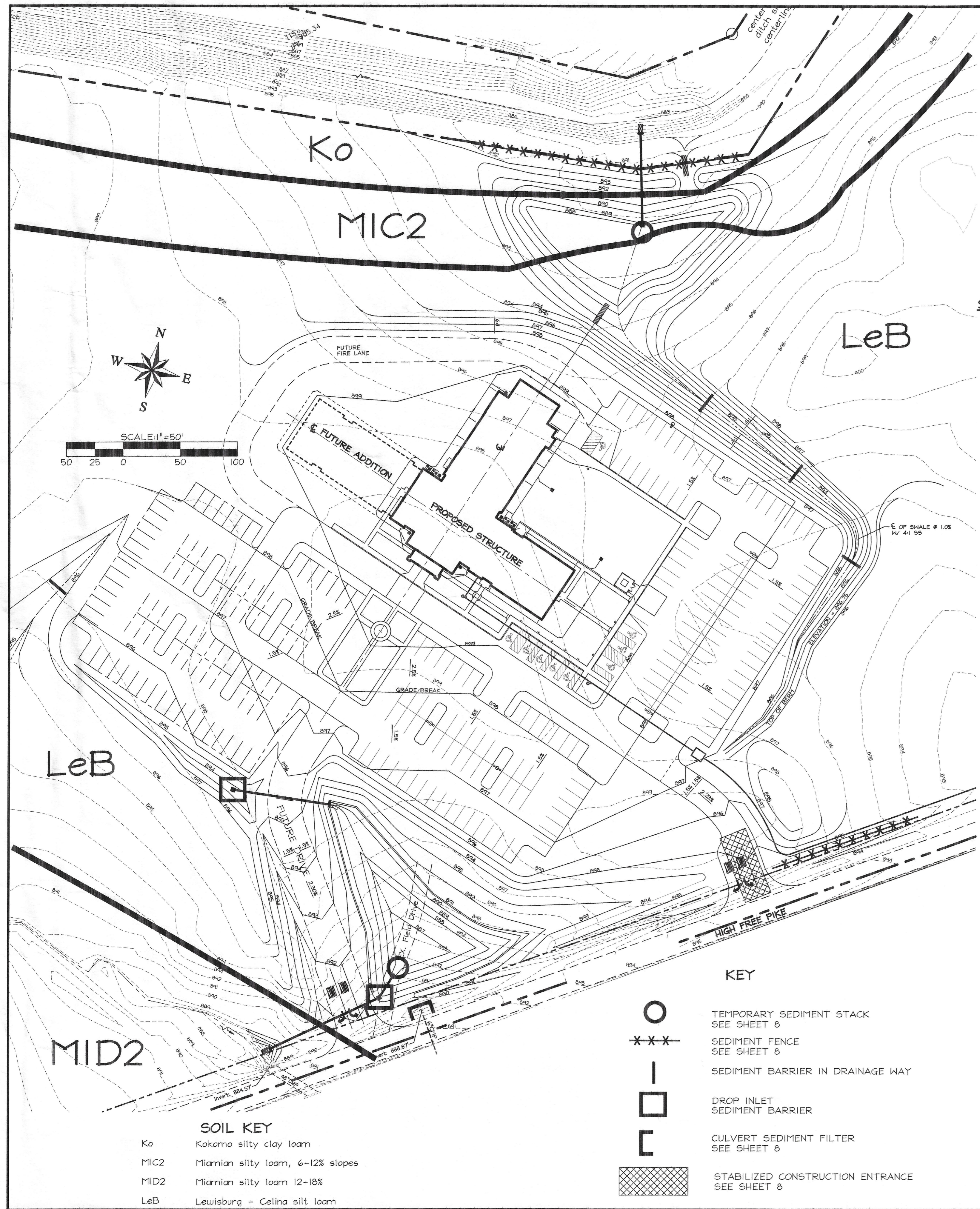


Civil Design Engineering, Inc.
8813 HAYHURST STREET
WORTHINGTON, OHIO 43085
614-431-5803 FAX: 614-431-5804

SS. SIMON & JUDE CATHOLIC CHURCH
HIGH FREE PIKE
MADISON COUNTY

PROFILES & DETAILS

ISSUED:	
PRELIMINARY	03-30-2005
PERMIT	05-14-2005
	08-02-2005
CONSTRUCTION	
AS BUILT	

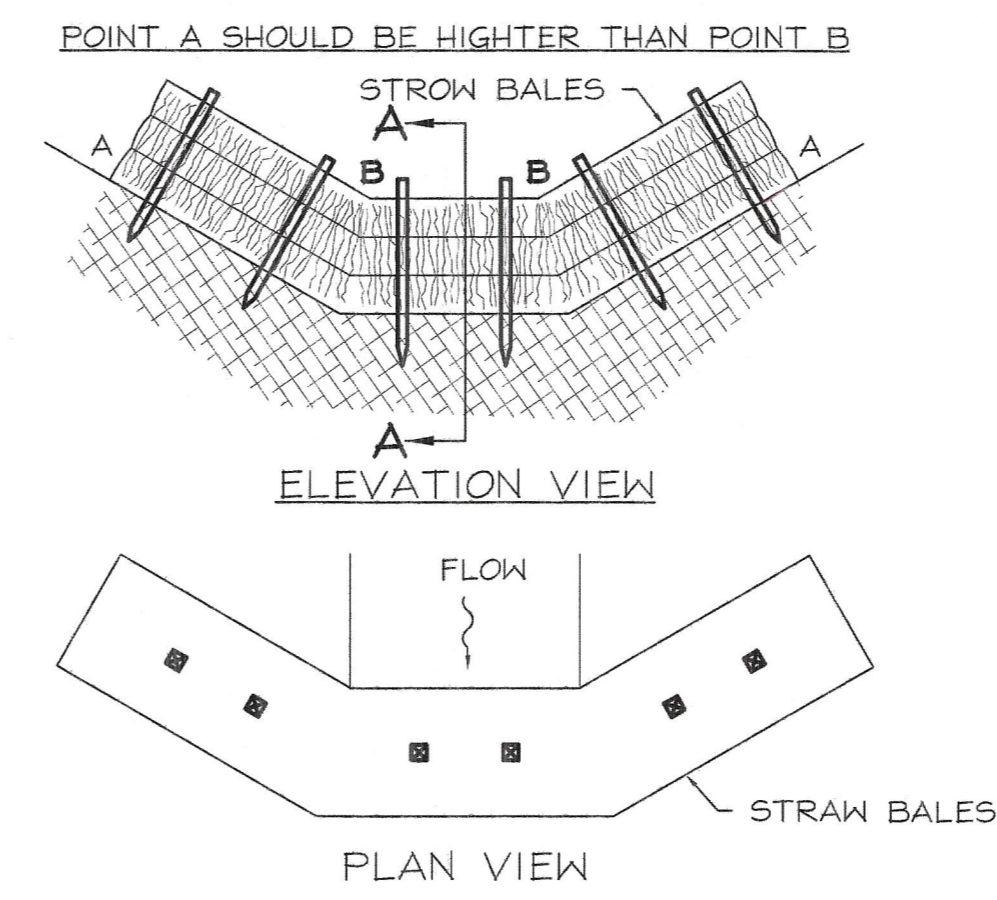


SOIL KEY

Ko	Kokomo silty clay loam
MIC2	Miamian silty loam, 6-12% slopes
MID2	Miamian silty loam 12-18%
LeB	Lewisburg - Celina silt loam

KEY

	TEMPORARY SEDIMENT STACK SEE SHEET 8
	SEDIMENT FENCE SEE SHEET 8
	SEDIMENT BARRIER IN DRAINAGE WAY
	DROP INLET SEDIMENT BARRIER
	CULVERT SEDIMENT FILTER SEE SHEET 8
	STABILIZED CONSTRUCTION ENTRANCE SEE SHEET 8



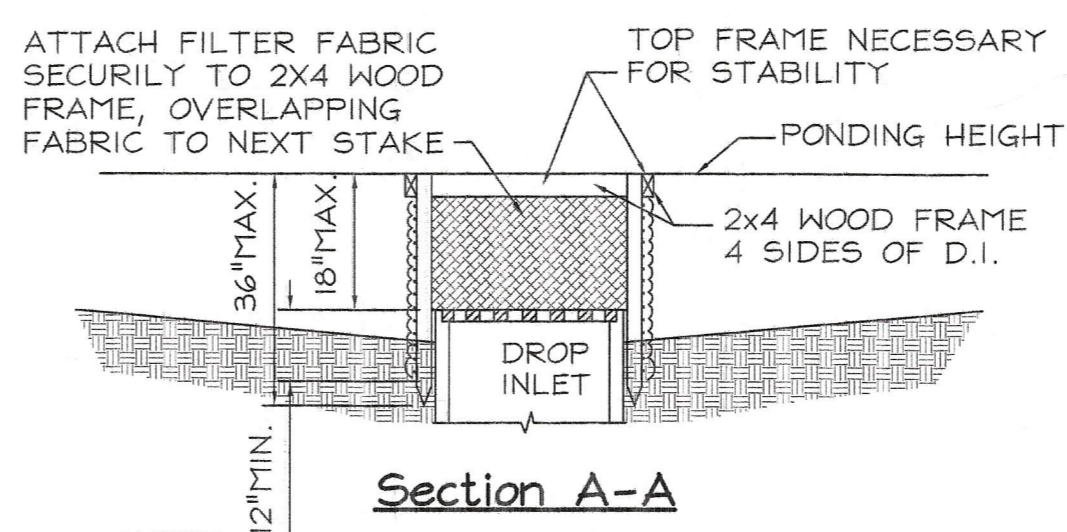
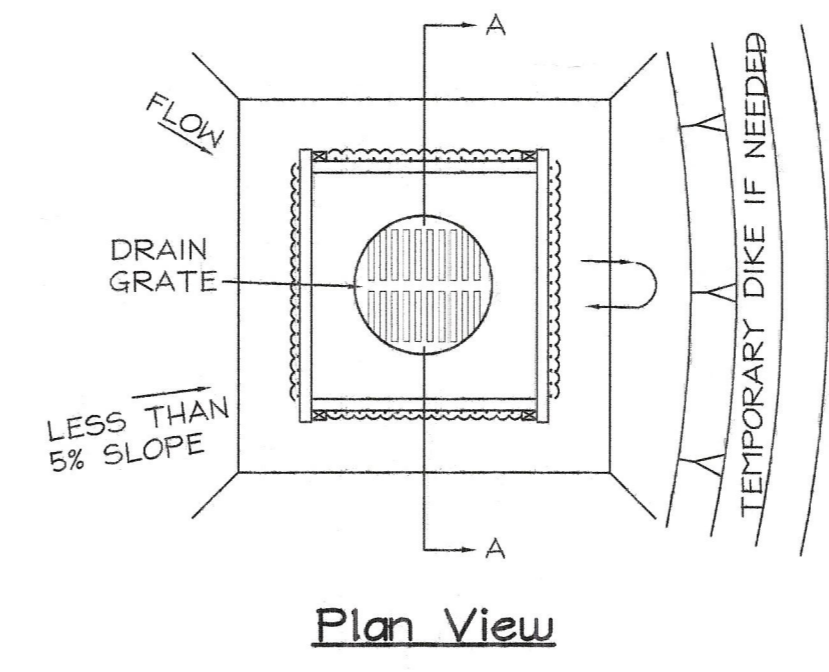
SEDIMENT BARRIER IN DRAINAGE WAY

CONTRACTOR SHALL PLACE SEDIMENT BARRIERS AS LOCATED ON PLAN IMMEDIATELY AFTER CONSTRUCTION OF DRAINAGE SWALES.

THE DITCH SHALL BE INSPECTED AFTER EACH RAIN AND REPAIRS MADE AS NEEDED.

SEDIMENT SHALL BE REMOVED AND THE BALES RESTORED TO THEIR ORIGINAL DIMENSION WHEN THE SEDIMENT HAS ACCUMULATED TO 1/2 THE DESIGN HEIGHT OF THE TRAP. SEDIMENT REMOVED SHALL BE PLACED IN SUCH A MANNER THAT IT WILL NOT ERODE.

SEDIMENT FILTERS SHALL BE REMOVED WHEN THE DRAINAGE AREA HAS BEEN PROPERLY STABILIZED.



NOTES:

DROP INLET SEDIMENT BARRIERS ARE TO BE USED FOR SMALL, NEARLY LEVEL DRAINAGE AREA. (LESS THAN 5%)

USE 2"x4" WOOD OR EQUIVALENT METAL STAKES, 3' MINIMUM LENGTH.

INSTALL 2"x4" WOOD TOP FRAME TO INSURE STABILITY.

THE TOP OF THE FRAME (PONDING HEIGHT) MUST BE WELL BELOW THE GROUND ELEVATION DOWNSLOPE TO PREVENT RUNOFF FROM BYPASSING THE INLET. A TEMPORARY DIKE MAY BE NECESSARY IN THE DOWNSIDE SLOPE OF THE STRUCTURE.

SILT FENCE - DROP INLET SEDIMENT BARRIER
NOT TO SCALE

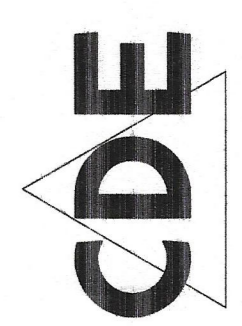
GENERAL CONSTRUCTION SEQUENCE

- INSTALL STABILIZED CONSTRUCTION ENTRANCE.
- INSTALL SILT FENCE
- INSTALL SEDIMENT BASINS, DIVERSION DITCHES AND TEMPORARY SEDIMENT CONTROL STACKS.
- PERFORM SITE ROUGH GRADING.
- INSTALL SEDIMENT BARRIERS IN DRAINAGE WAY
- INSTALL STORM SEWERS AND STRUCTURES WITH EROSION CONTROL ELEMENTS INDICATED. PLACE TEMPORARY SEDIMENT STACKS AT DETENTION BASIN OUTLETS.
- INSTALL OTHER UNDERGROUND UTILITIES.
- CONSTRUCT BUILDING, FINE GRADE PARKING AREAS, PLACE PAVEMENT.
- MAINTAIN ALL EROSION CONTROL ELEMENTS UNTIL FINAL LANDSCAPING AND SEEDING HAS BEEN ESTABLISHED.
- REMOVE ALL EROSION CONTROL ELEMENTS

SITE DATA

OWNER/DEVELOPER:	CATHOLIC DIOCESE OF COLUMBUS 197 E. GAY STREET COLUMBUS, OHIO 43215 PH: (614) 228-2453 FAX: (614) 228-7302
PLAN DESIGNER:	CIVIL DESIGN ENGINEERING 6813 HAYHURST STREET WORTHINGTON, OHIO 43085 PH: (614) 431-5803 FAX: (614) 431-5804
DEVELOPMENT TYPE:	RELIGIOUS FACILITY WITH ASSOCIATED PARKING
SITE ACREAGE:	56.848 ACRES
DISTURBED ACREAGE:	8.84 ACRES
AVERAGE SLOPE:	1.5%
RCN:	PRE: 79 POST: 98 (PAVED/BUILDING AREAS: 3.66 ACRES) 79 (OPEN SPACE/LAWNS (SOIL TYPE "C"): 5.43 ACRES) COMPOSITE CN=86.6 (40% IMPERVIOUS AREA)
ADJACENT AREAS:	ADDITIONAL PROPERTY OWNED BY THE CHURCH SURROUNDS THE PROPOSED DEVELOPMENT. THIS PROPERTY IS UNDEVELOPED AT THIS TIME
STORM WATER MANAGEMENT:	ON SITE DETENTION WITH ORIFICE RESTRICTION AT OUTLET DRY DETENTION BASINS SIZED BASED ON MORPC CRITERIA. DISCHARGE IS CONTROLLED BY ORIFICE PLATES.
RECEIVING STREAM:	EXISTING HENDRICK DITCH TO NORTH AND AN EXISTING 48" CULVERT TO SOUTH.
EXISTING LAND USE:	EXISTING SITE IS VACANT/UNUSED
ON SITE CONTACT:	PAT DAVIS PH: (614) 228-2453 FAX: (614) 228-7302
INSPECTIONS:	AT A MINIMUM, CONTRACTOR SHALL PROVIDE FOR WEEKLY INSPECTIONS OF ALL CONTROL ELEMENTS OF THE STORMWATER PREVENTION PLAN. INSPECTIONS SHALL ALSO TAKE PLACE WITHIN 24 HOURS AFTER ANY STORM GREATER THAN 1/2" OF RAIN WITHIN A 24 HOUR PERIOD. ANY REPAIRS SHALL BE MADE ACCORDINGLY AND IN A TIMELY MANNER.

ALL EROSION AND SEDIMENT CONTROL PRACTICES ARE SUBJECT TO FIELD MODIFICATIONS AT THE DISCRETION OF THE MADISON COUNTY SOIL AND WATER CONSERVATION DISTRICT AND/OR THE OHIO EPA.



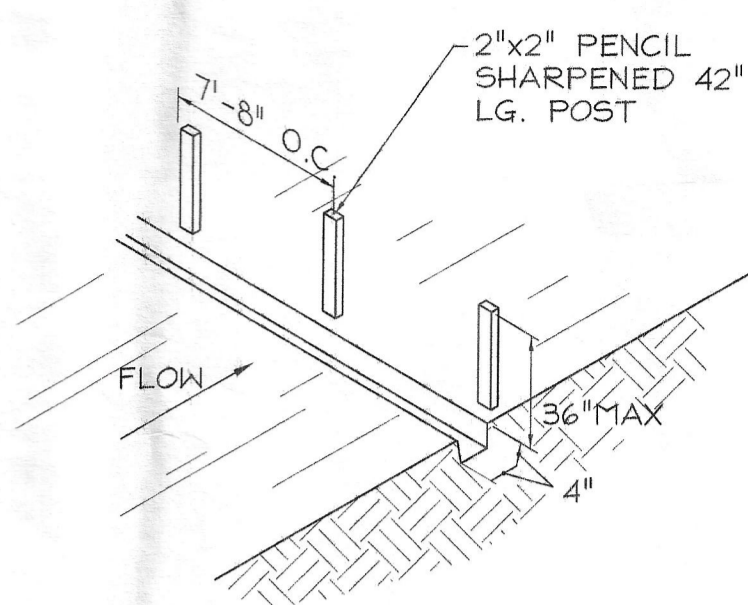
Civil Design Engineering, Inc.
6813 HAYHURST STREET
WORTHINGTON, OHIO 43085
614-431-5803 FAX: 614-431-5804

SS. SIMON & JUDE CATHOLIC CHURCH
HIGH FREE PIKE
MADISON COUNTY

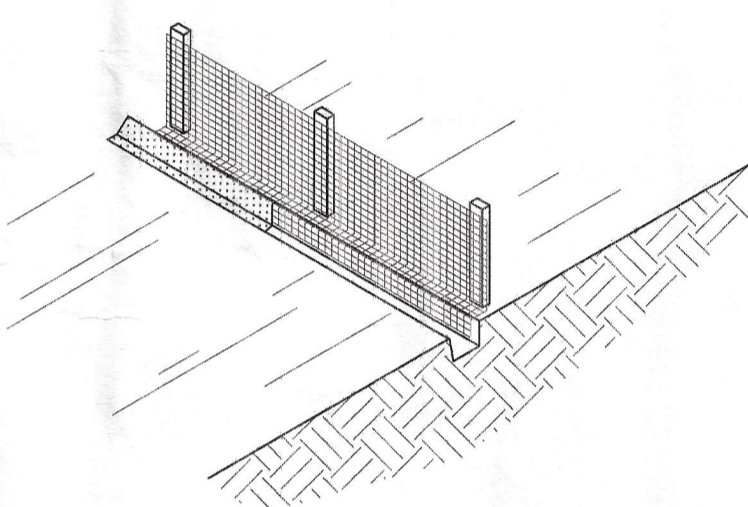
EROSION CONTROL PLAN

ISSUED:	
PRELIMINARY	03-30-2005
PERMIT	05-14-2005
CONSTRUCTION	08-02-2005
AS BUILT	

SILT FENCE DETAIL



- 1.) SET THE STAKES
- 2.) EXCAVATE A 4"x4" TRENCH UPSLOPE ALONG THE LINE STAKES
- 3.) STAPLE FILTER MATERIAL TO STAKES AND EXTEND IT INTO THE TRENCH
- 4.) BACKFILL AND COMPACT THE EXCAVATED SOIL.



SILT FENCE. THIS SEDIMENT BARRIER UTILIZES STANDARD STRENGTH OR EXTRA STRENGTH SYNTHETIC FILTER FABRICS. IT IS DESIGNED FOR SITUATIONS IN WHICH ONLY SHEET OR OVERLAND FLOWS ARE EXPECTED.

THE FILTER FABRIC SHALL BE PURCHASED IN A CONTINUOUS ROLL CUT TO THE LENGTH OF THE BARRIER TO AVOID THE USE OF JOINTS. WHEN JOINTS ARE NECESSARY FILTER CLOTH SHALL BE SPLICED TOGETHER ONLY AT A SUPPORT POST WITH A MINIMUM OF 6" OVERLAP AND SECURELY SEALED.

POSTS SHALL BE SPACED A MAXIMUM OF 7'-8" O.C. AT THE BARRIER LOCATION AND DRIVEN SECURELY INTO THE GROUND (MINIMUM OF 12 INCHES). WHEN EXTRA STRENGTH FABRIC IS USED WITHOUT WIRE SUPPORT, FENCE POST SPACING SHALL NOT EXCEED 6 FEET.

A TRENCH SHALL BE EXCAVATED APPROXIMATELY 4 INCHES WIDE & 4 INCHES DEEP ALONG THE LINE OF THE POSTS AND UPSLOPE FROM THE BARRIER.

WHEN STANDARD STRENGTH FILTER FABRIC IS USED A WIRE MESH SUPPORT FENCE SHALL BE FASTENED SECURELY TO THE UPSLOPE SIDE OF THE POSTS USING HEAVY DUTY WIRE STAPLES AT LEAST 1 INCH LONG, TIE WIRES OR HOG RINGS. THE WIRE MESH SHALL EXTEND INTO THE TRENCH A MINIMUM OF 2" & SHALL NOT EXTEND MORE THAN 36 INCHES ABOVE THE ORIGINAL GROUND SURFACE.

THE STANDARD STRENGTH FILTER FABRIC SHALL BE STAPLED OR WIRED TO THE FENCE AND 8 INCHES OF THE FABRIC SHALL BE EXTENDED INTO THE TRENCH. THE FABRIC SHALL NOT EXTEND MORE THAN 36 INCHES ABOVE THE ORIGINAL GROUND SURFACE. FILTER FABRIC SHALL NOT BE STAPLED TO EXISTING TREES.

WHEN EXTRA STRENGTH FILTER FABRIC AND CLOSER POST SPACING ARE USED THE WIRE MESH SUPPORT FENCE MAY BE ELIMINATED. IN SUCH A CASE THE FILTER FABRIC IS STAPLED OR WIRED DIRECTLY TO THE POSTS.

THE TRENCH SHALL BE BACKFILLED AND SOIL COMPACTED OVER THE FILTER FABRIC.

ALL EARTHWORK AND SUB GRADE PREPARATION SHALL BE BASED ON THIS CHART UNLESS ARCHITECTURAL AND OR GEOTECHNICAL STATEMENTS INDICATE OTHERWISE.

EARTHWORK

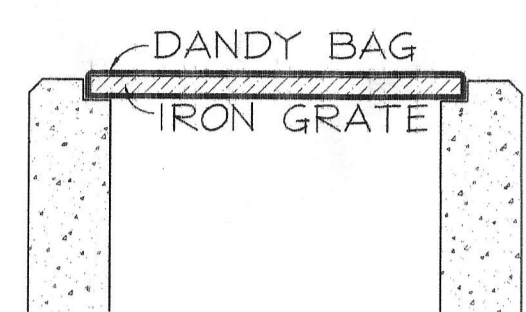
AREA	DEGREE OF COMPACTION STANDARD PROCTOR ASTM D 698	MATERIAL	TYPICAL MAXIMUM LIFT THICKNESS *
ROADS, DRIVES AND PARKING AREAS	100%	AGGREGATE BASE	8"
	98%/100% UPPER 12"	STRUCTURAL FILL	8"
UNDER FOUNDATIONS AND FOOTINGS	98%	STRUCTURAL FILL	8"
WITHIN 3' OF EXTERIOR SIDE OF FOUNDATION WALLS	95%	BANKRUN OR DRAINAGE FILL	8"
BEYOND 3' OF EXTERIOR SIDE OF FOUNDATION WALLS	93%	COMMON FILL	8"
BELOW SLAB-ON-GRADE	SEE SHEET S2.1	DRAINAGE FILL	8"
BELOW INTERLOCKING PAVERS	98%	STRUCTURAL FILL	8"
PIPE BEDDING (CLASS B)	95%	BANKRUN	8"
GRASSSED AREAS	ROLLED 98%	TOPSOIL	6"
	93%	COMMON FILL	12"
SODDED AREA	ROLLED 93%	TOPSOIL	4"
		COMMON FILL	12"
LANDSCAPE AREAS	93%	COMMON FILL	12"
OVER EXCAVATED AREA	98%	STRUCTURAL FILL, BANKRUN OR CRUSHED STONE AS DIRECTED BY GEOTECHNICAL ENGINEER	8"
UTILITY TRENCH BACKFILL	95%	COMMON FILL AS APPROVED BY GEOTECHNICAL ENGINEER	GRANULAR 8" COHESIVE 4"

* LOOSE LIFT THICKNESS WILL BE CONTROLLED BY TYPE OF COMPACTION EQUIPMENT AND CONDITION OF FILL MATERIAL

FILL LIFT THICKNESS BASED ON TYPE OF COMPACTION EQUIPMENT

TYPE OF COMPACTION EQUIPMENT	MAXIMUM LIFT THICKNESS (INCHES)*	
	GRANULAR SOIL (SAND & GRAVEL, DGA, ETC.)	COHESIVE SOIL (LEAN CLAY, SILTY CLAY, ETC.)
HAND OPERATED VIBRATORY PLATE	6" - 8"	N/A
HAND OPERATED "JUMPING JACK"(IN CONFINED SPACES")	N/A	4"
WALK BEHIND DOUBLE DRUM VIBRATORY FLATWHEEL ROLLER	8" - 12"	N/A
WALK BEHIND DOUBLE DRUM SHEEPSFOOT ROLLER	N/A	4" - 6"
6 TO 10 TON VIBRATORY FLATWHEEL ROLLER	8" - 12"	N/A
5 TO 10 TON VIBRATORY OR STATIC SHEEPSFOOT ROLLER	N/A	8"
20+ TONE SELF-PROPELLED VIBRATORY FLATWHEEL ROLLER	12"	N/A
20+ TONE SELF-PROPELLED VIBRATORY OR STATIC SHEEPSFOOT ROLLER	N/A	8"

* BASED ON FILL SOIL BEING COMPACTED AT OPTIMUM CONDITIONS



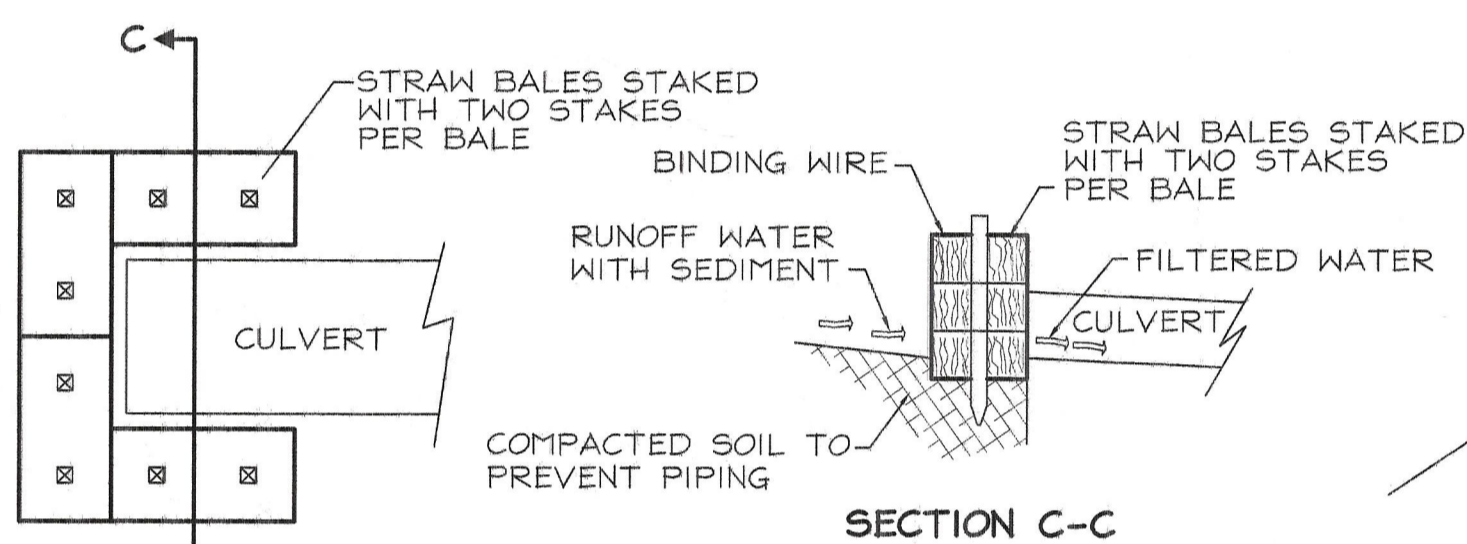
DANDY BAG EROSION CONTROL DEVICE

INSTALL DANDY BAGS ON ALL CATCH BASIN STRUCTURES

REMOVE DRIED SEDIMENT FROM SURFACE OF UNIT AND FINE MATERIAL FROM INSIDE ENVELOPE AS NEEDED.

DANDY PRODUCTS INC.
P.O. BOX 1980
WESTERVILLE, OHIO 43086
1-800-591-2284
www.dandyproducts.com

LOCAL SUPPLIERS:
SITE SUPPLY 614-443-4545 (MARK CONVERSE)
EAST JORDAN IRON WORKS 614-871-2436



CULVERT SEDIMENT FILTER

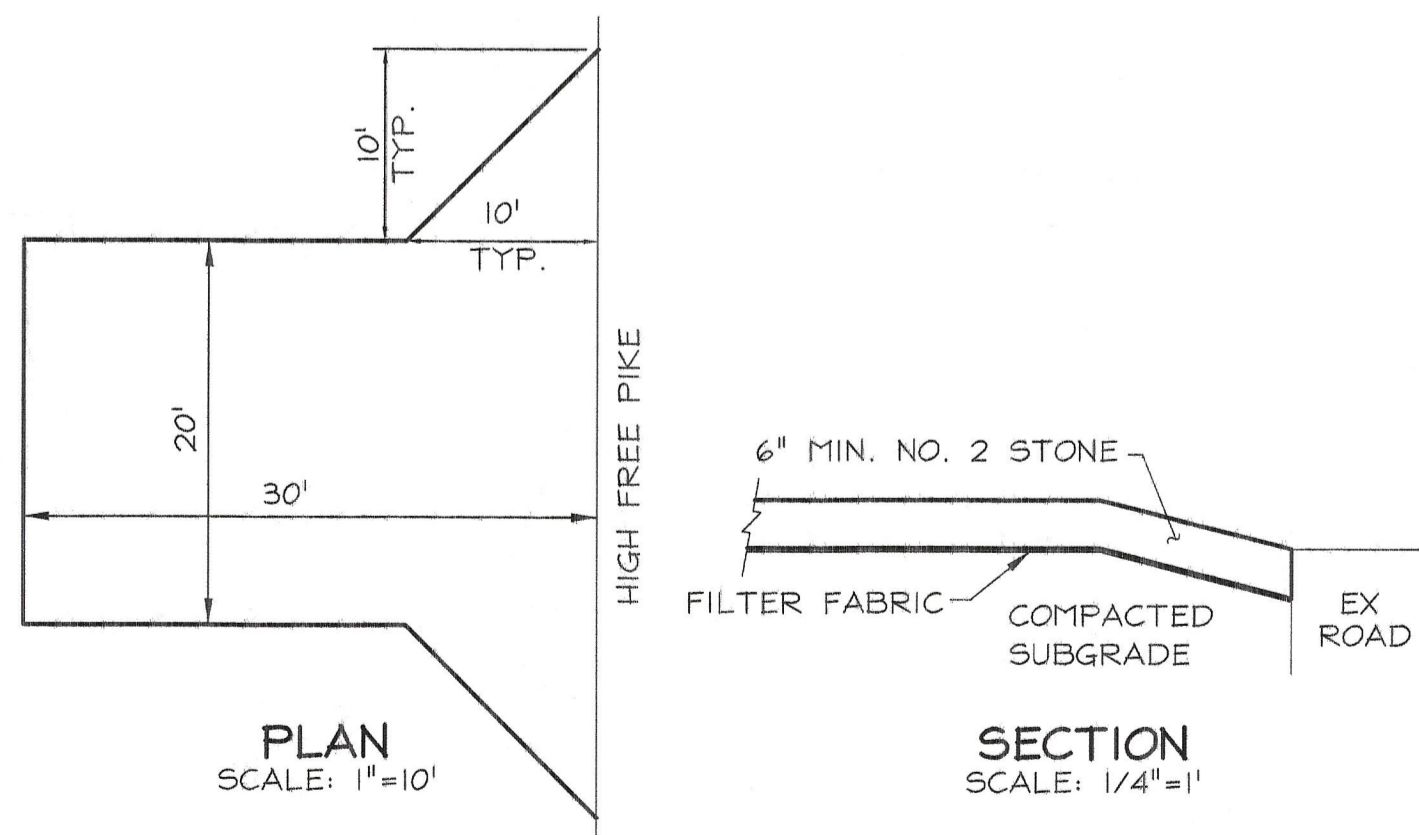
EARTHWORK CONTRACTOR SHALL PLACE STRAW BALES FOR EROSION CONTROL IMMEDIATELY AFTER CONSTRUCTION OF CULVERT.

THE SEDIMENT FILTER SHALL BE INSPECTED AFTER EACH RAIN AND REPAIRS MADE AS NEEDED.

SEDIMENT SHALL BE REMOVED AND THE BALES RESTORED TO THEIR ORIGINAL DIMENSION WHEN THE SEDIMENT HAS ACCUMULATED TO 1/2 THE DESIGN DEPTH OF THE TRAP.

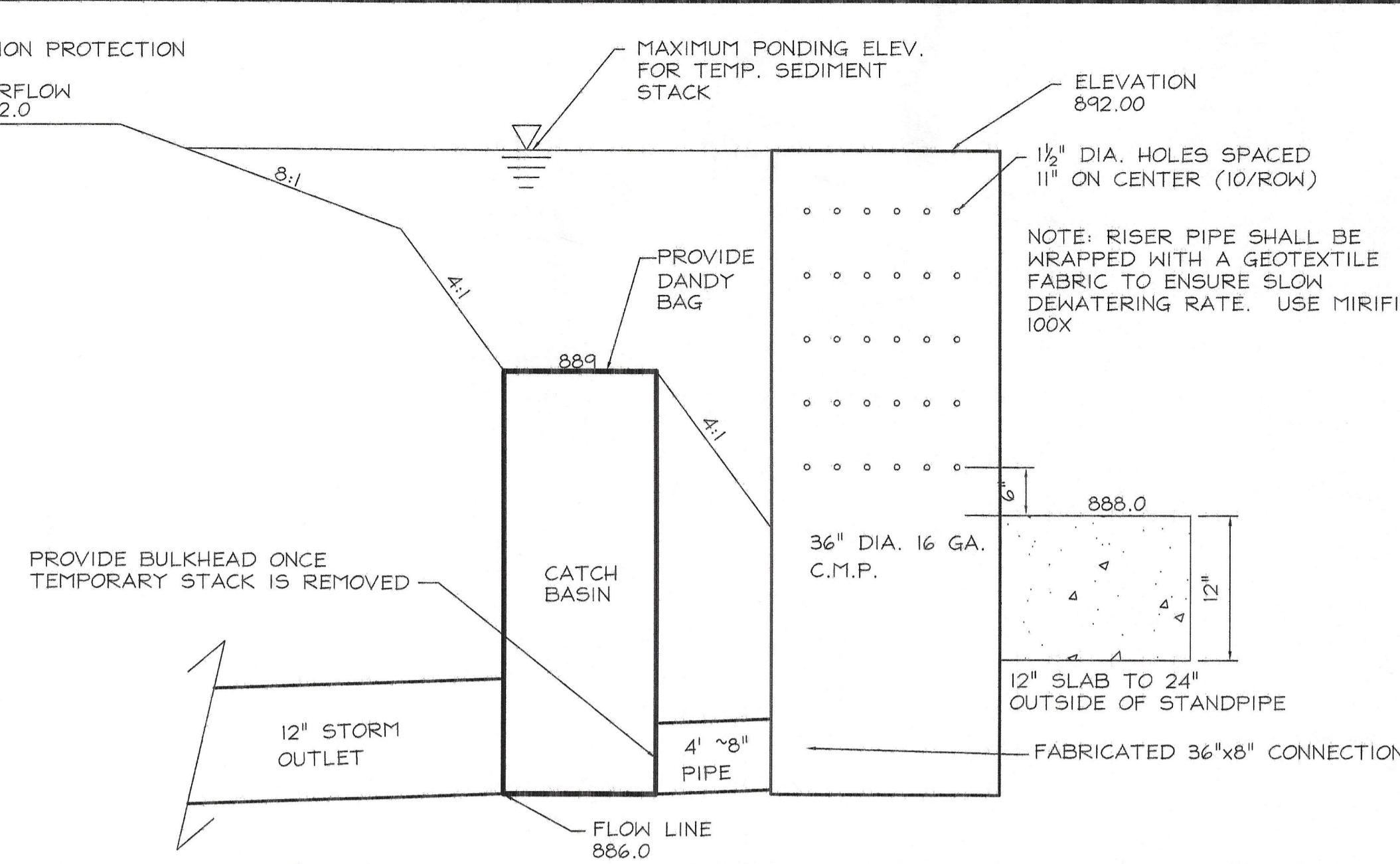
SEDIMENT REMOVED SHALL BE DEPOSITED IN SUCH A MANNER THAT IT WILL NOT ERODE.

SEDIMENT FILTER SHALL BE REMOVED WHEN ITS' DRAINAGE AREA HAS VBEEN PROPERLY STABILIZED.



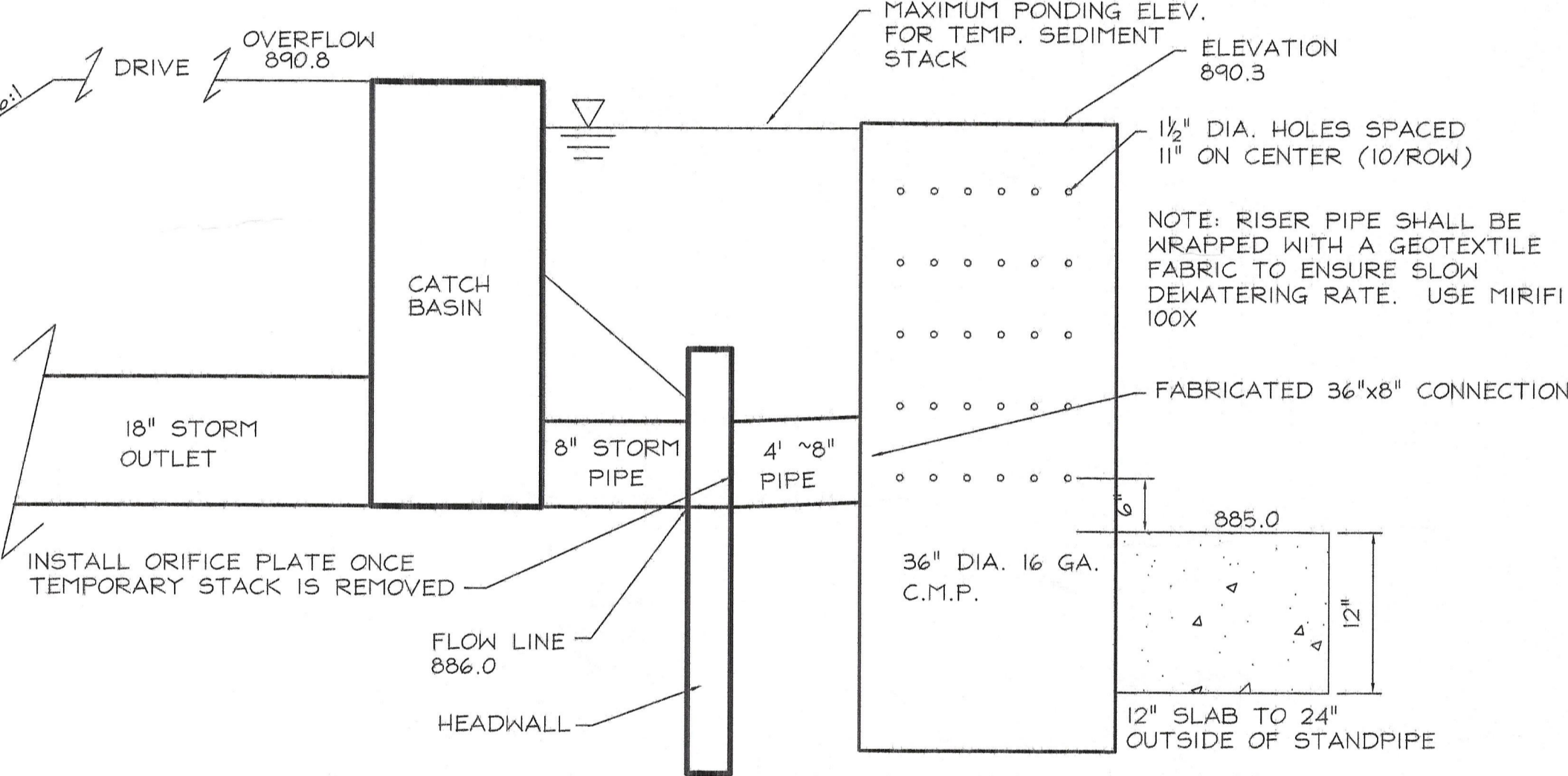
STABILIZED CONSTRUCTION ENTRANCE

WHEELS SHALL BE CLEANED TO REMOVE SEDIMENT PRIOR TO ENTERING STREET. PERIODICALLY ADD CLEAN STONE AS CONDITIONS DEMAND. ALL SEDIMENT TRACKED INTO THE STREET SHALL BE CLEANED UP IMMEDIATELY. REMOVE GRAVEL AND PREPARE AREA FOR PAVEMENT WHEN CONSTRUCTION ENTRANCE IS NO LONGER NEEDED.



TEMPORARY SEDIMENT CONTROL PIPE NORTH

NO SCALE
Volume Required = 4.94 acres x 67 cu. yd/acre x 27 cu ft/cu yd = 8536 cu. ft.
Volume Provided = 53,155 cu. ft.
WQ_s = 0.8 x 0.75 x 4.94 / 12 = 0.247 acre-ft. = 10,759 cu. ft.
Released by 1 1/2" orifice over 48 hours
Over excavate basin by 2152 cu.ft.



TEMPORARY SEDIMENT CONTROL PIPE SOUTH

NO SCALE
Volume Required = 3.92 acres x 67 cu. yd/acre x 27 cu ft/cu yd = 7091 cu. ft.
Volume Provided = 24,431 cu. ft.
WQ_s = 0.8 x 0.75 x 3.92 / 12 = 0.196 acre-ft. = 8,538 cu. ft.
Released by 1 1/4" orifice over 48 hours
Over excavate basin by 1708 cu.ft.

SPECIFICATIONS FOR SEEDING & MULCHING

SEED TYPE	SEEDING DATES	PER 1000 SQ. FT.	PER ACRE
TALL FESCUE & ANNUAL RYEGRASS	MARCH 1 TO SEPTEMBER 15	2 POUND	80 POUNDS
		1/2 POUNDS	20 POUNDS
SMALL GRAIN STRAW	MARCH 1 TO SEPTEMBER 15	100 POUNDS OR 2 OR 3 BALES	2 TONS OR 50 BALES
FERTILIZER		25 POUNDS OF 12-12-12 OR THE EQUIVALENT	100 POUNDS OF 12-12-12 OR THE EQUIVALENT
TEMPORARY SEEDING			
RYE OR WHEAT	SEPTEMBER 15 TO OCTOBER 30	3 POUNDS	2 BUSHELS
SOIL PROTECTION			
SMALL GRAIN STRAW, MULCH	OCTOBER 30 TO MARCH 1	2 TO 3 BALES	2 TONS

EROSION DETAILS

ISSUED:	
PRELIMINARY	03-30-2005
PERMIT	05-14-2005
	08-02-2005
CONSTRUCTION	
AS BUILT	

CDE
Civil Design Engineering, Inc.
6813 HAYHURST STREET
WILMINGTON, OHIO 43085
614-431-5885 FAX: 614-431-5804

SS. SIMON & JUDE CATHOLIC CHURCH
HIGH FREE PIKE
MADISON COUNTY